



**Charlie Crist, Governor**  
**Bob Butterworth, Secretary**

# **Targeted Populations:** **Recent Performance & Children Available** **By Age Group and Race Group**

**Child Abuse Prevention and**  
**Permanency Advisory Council**

*March 14, 2008*

**Mission: Protect the Vulnerable, Promote Strong and Economically Self-Sufficient Families,  
and Advance Personal and Family Recovery and Resiliency.**



# Targeted Recruitment: What the Numbers Tell Us

## Children Needing Adoptive Families

### – By Age Group

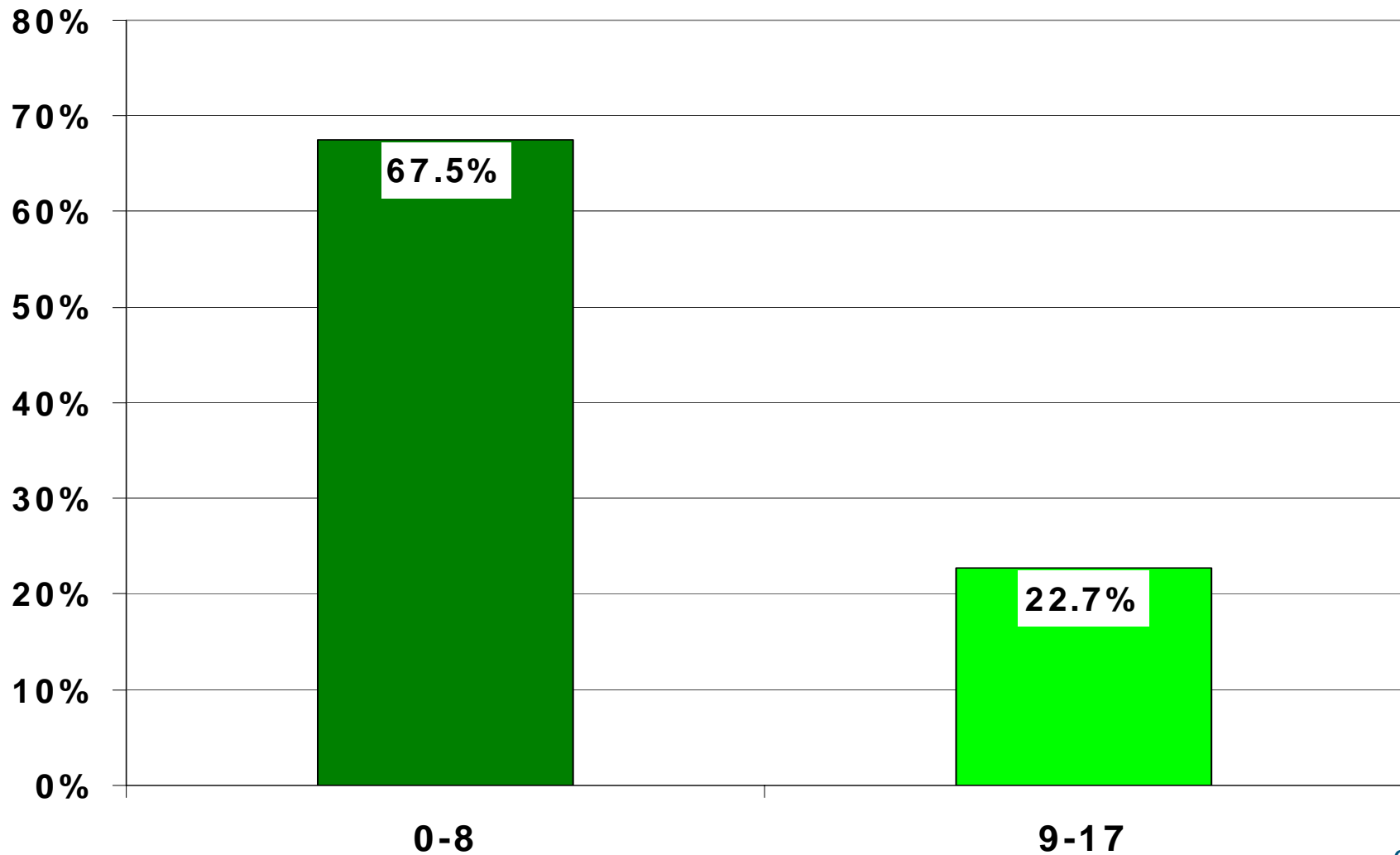
- Proportion Adopted in FY 2006-07
- Children Available for Adoption by Time in Care – November 2007

### – By Race Group

- Proportion Adopted in FY 2006-07
- Children Available for Adoption by Time in Care – November 2007

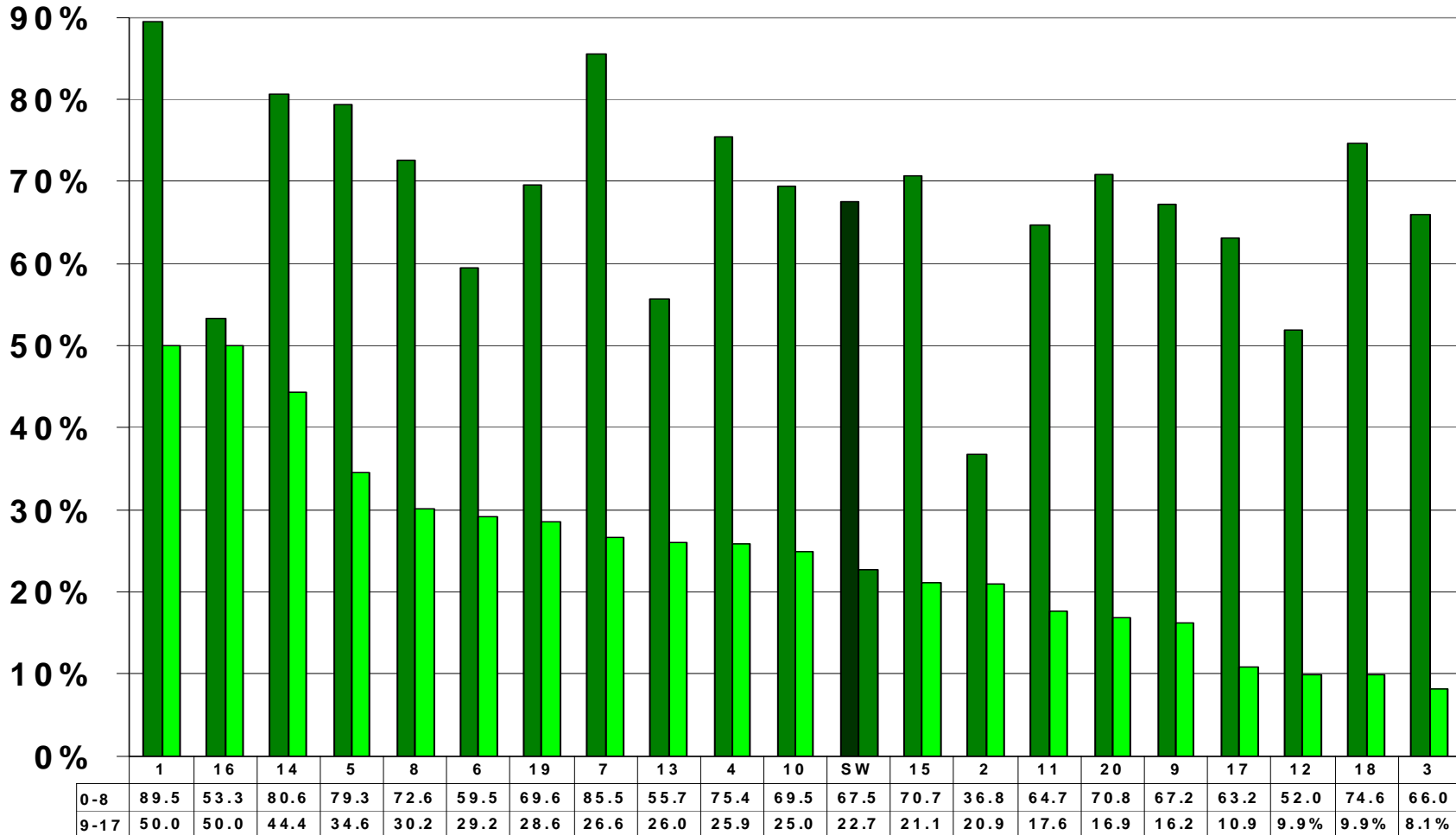


## Likelihood of Adoption by Age: Proportion Adopted FY 2006-07 Statewide





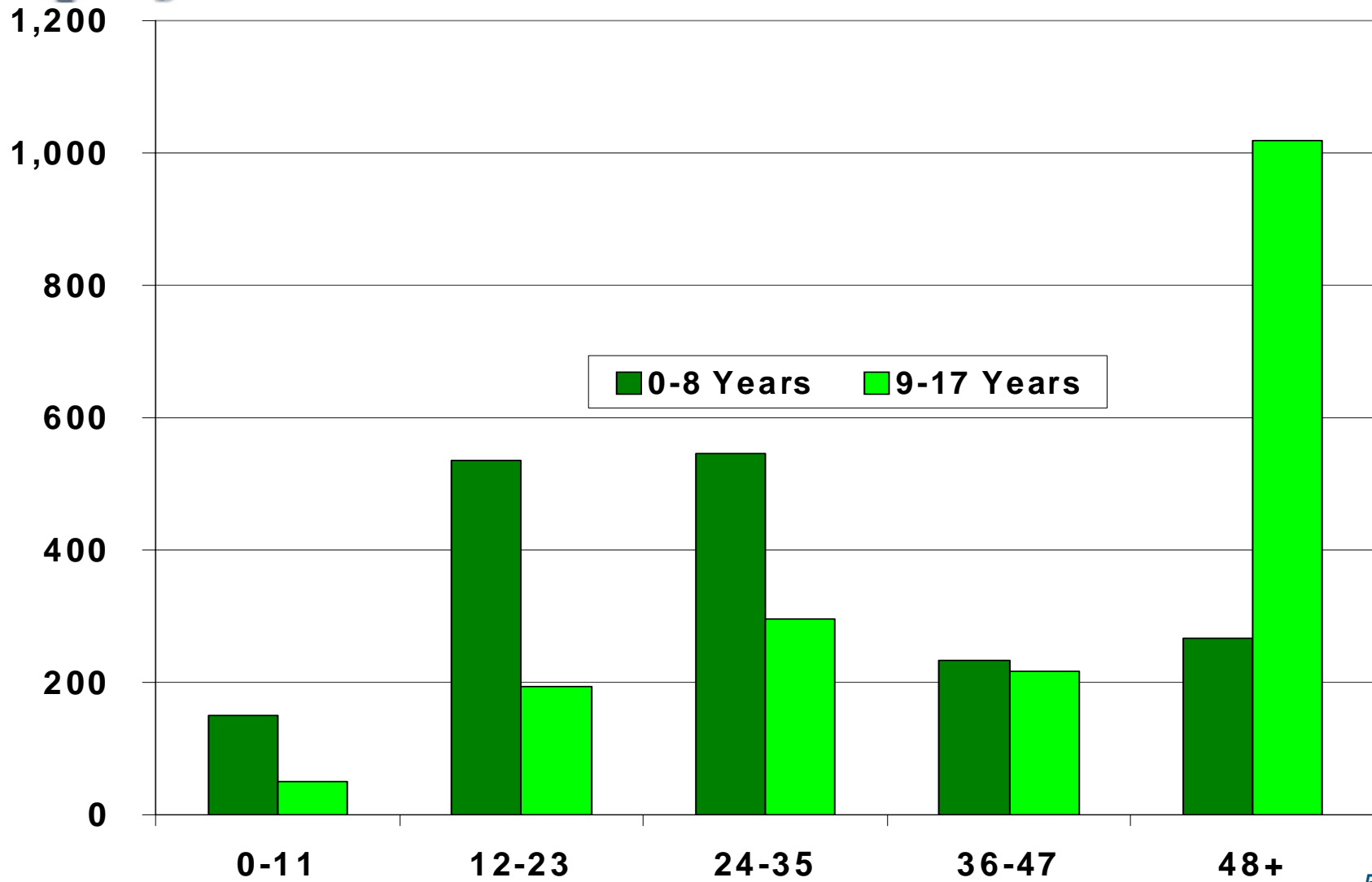
# Likelihood of Adoption by Age: Proportion Adopted FY 2006-07 By Circuit





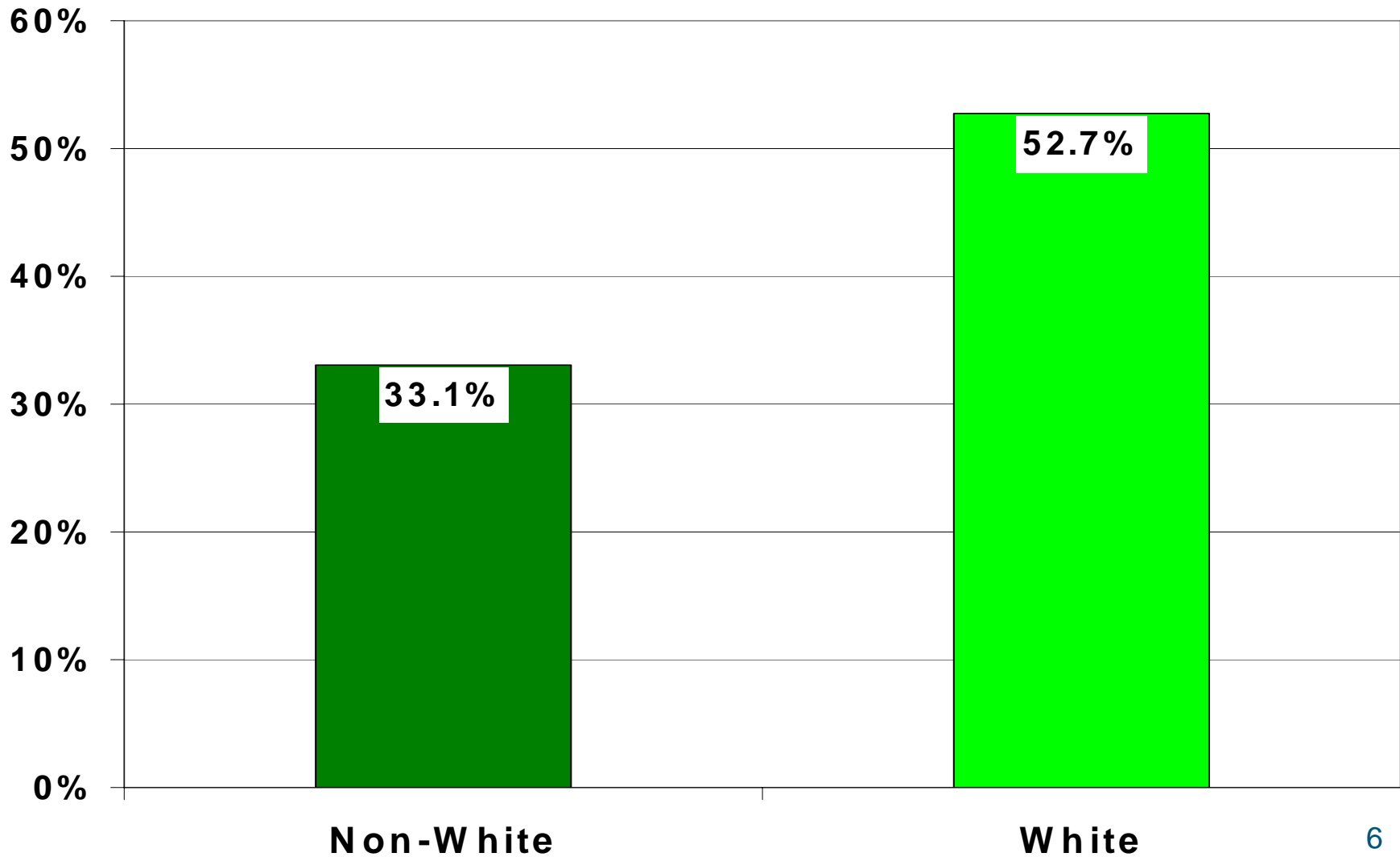
# Children Awaiting Adoption November 2007

## Time in Care (Months) by Age Group



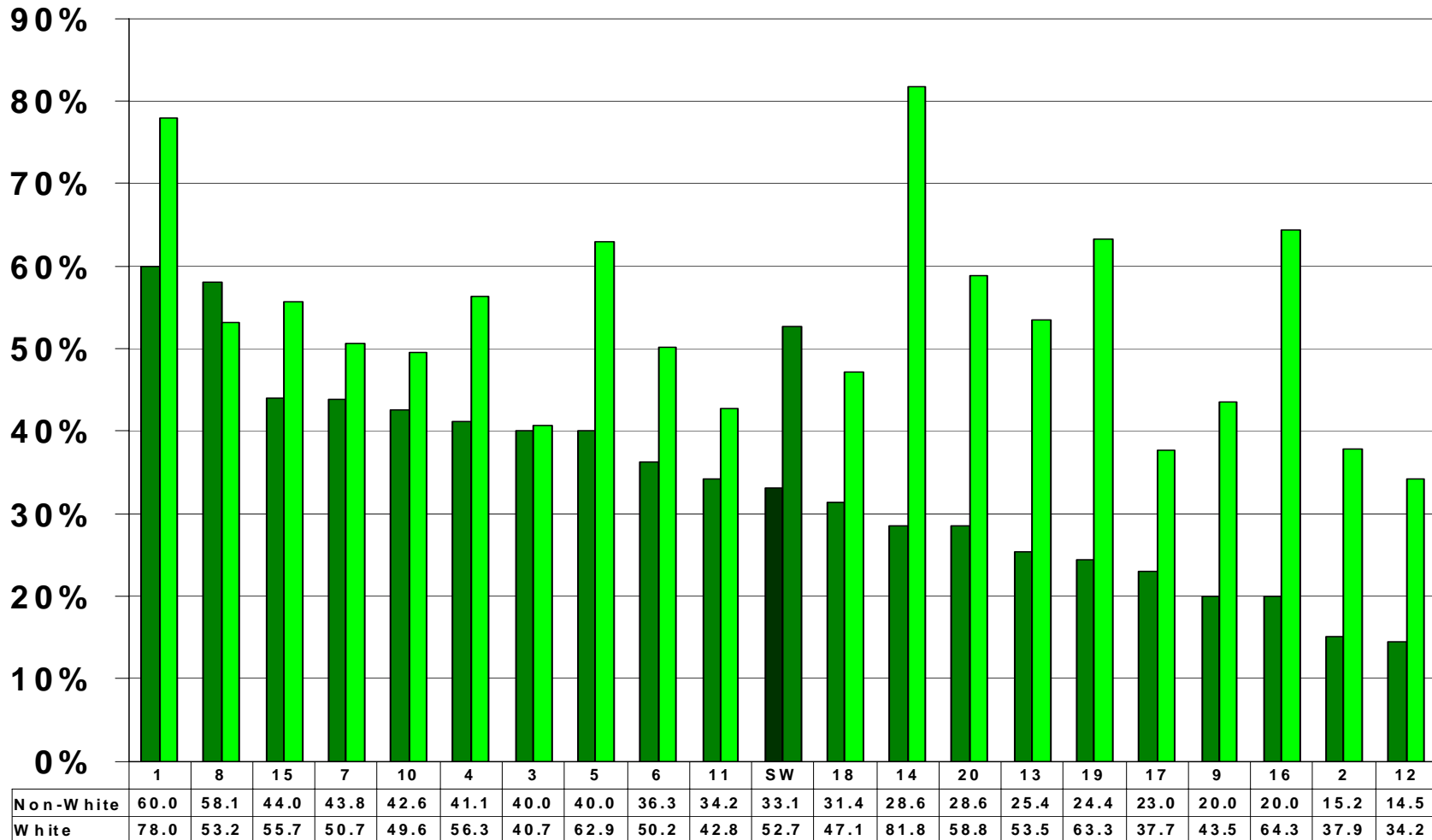


# Likelihood of Adoption by Race: Proportion Adopted FY 2006-07 Statewide



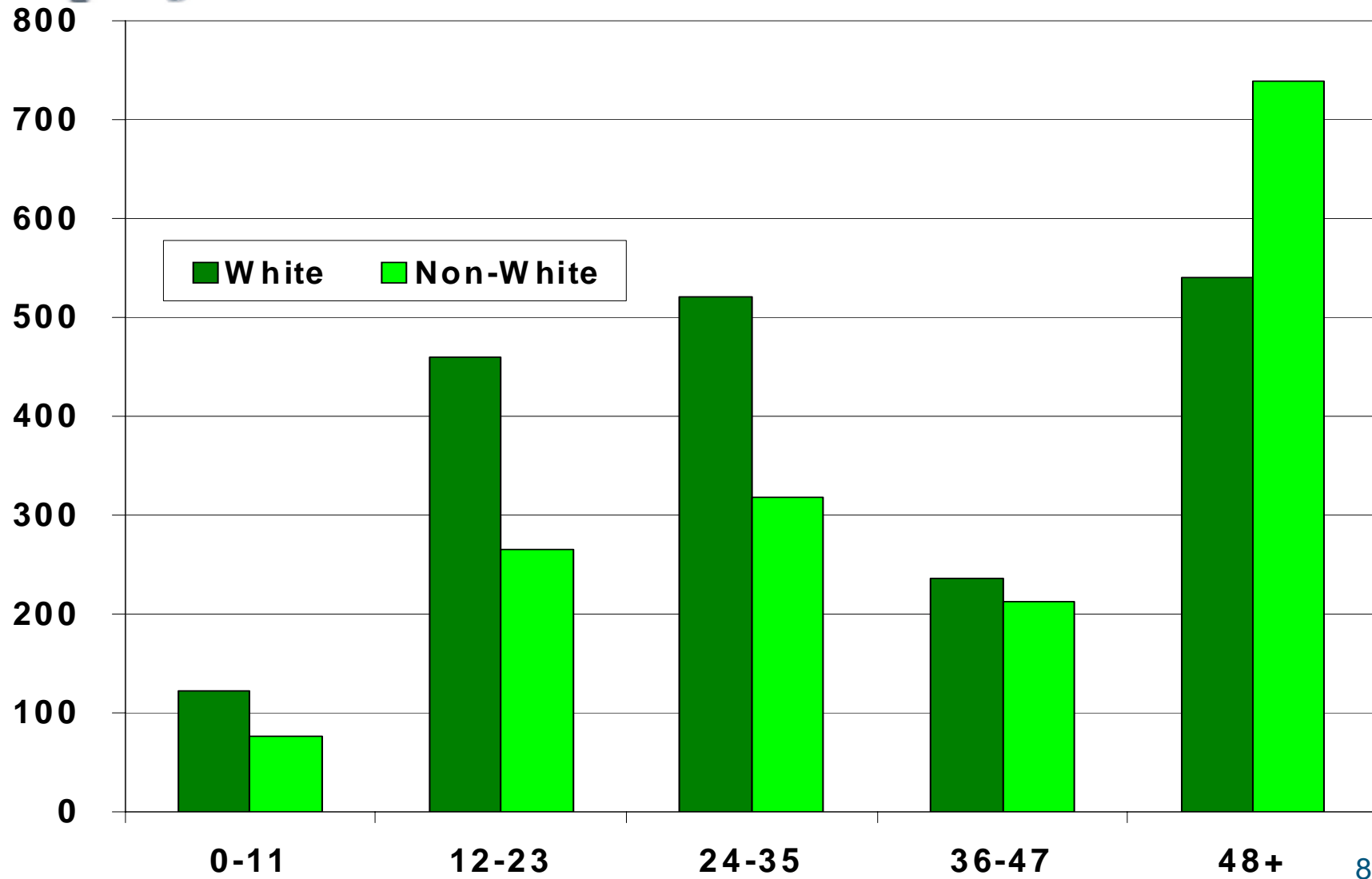


# Likelihood of Adoption by Race: Proportion Adopted FY 2006-07 By Circuit





## Children Awaiting Adoption November 2007 Time in Care (Months) by Race Group





# Targeted Recruitment: Summary of the Data

- **Age Groups**
  - Children 0-8 Three Times as Likely as Children 9-17 to Be Adopted in One Year
  - Over 1,000 Available 9-17 Year Olds Have Been in Care Over 4 Years
- **Race Groups**
  - White Children 50% More Likely to Be Adopted in One Year
  - Children Available & In Care <4 Years Tend to Be White; >4 Years Tend to be Non-White
- **Circuit Differences**
  - Some Circuits Much More Effective Recruiting for Older Children and Non-White Children



# Targeted Recruitment: Priorities Implied by the Data

- **Age Groups**
  - Older Children Need Much Greater Effort than Required for Younger Children
- **Race Groups**
  - Non-White Children Need Much Greater Effort than Required for White Children
- ***Recruitment Strategies*** Must Reflect the Target Population and Additional Effort Needed
- Some Circuits Need Much More Intensive Efforts