

**Deaths From Suicide (X72-X74,X60-X71, X75-X84, Y870)  
All Races, All Sexes, All Ethnicities, Ages 10 to 65+**

**Count Data**

	1995	1996	1997	1998	1999	2000	2001	2002	2003	2004	2005
10 to 24	232	232	197	207	172	202	208	206	199	223	225
25 to 64	1,298	1,346	1,328	1,379	1,341	1,377	1,517	1,581	1,567	1,641	1,582
65 up	607	564	564	566	552	554	564	544	526	516	499
All Ages	2,139	2,144	2,097	2,156	2,068	2,136	2,290	2,332	2,294	2,382	2,308

**Population Data**

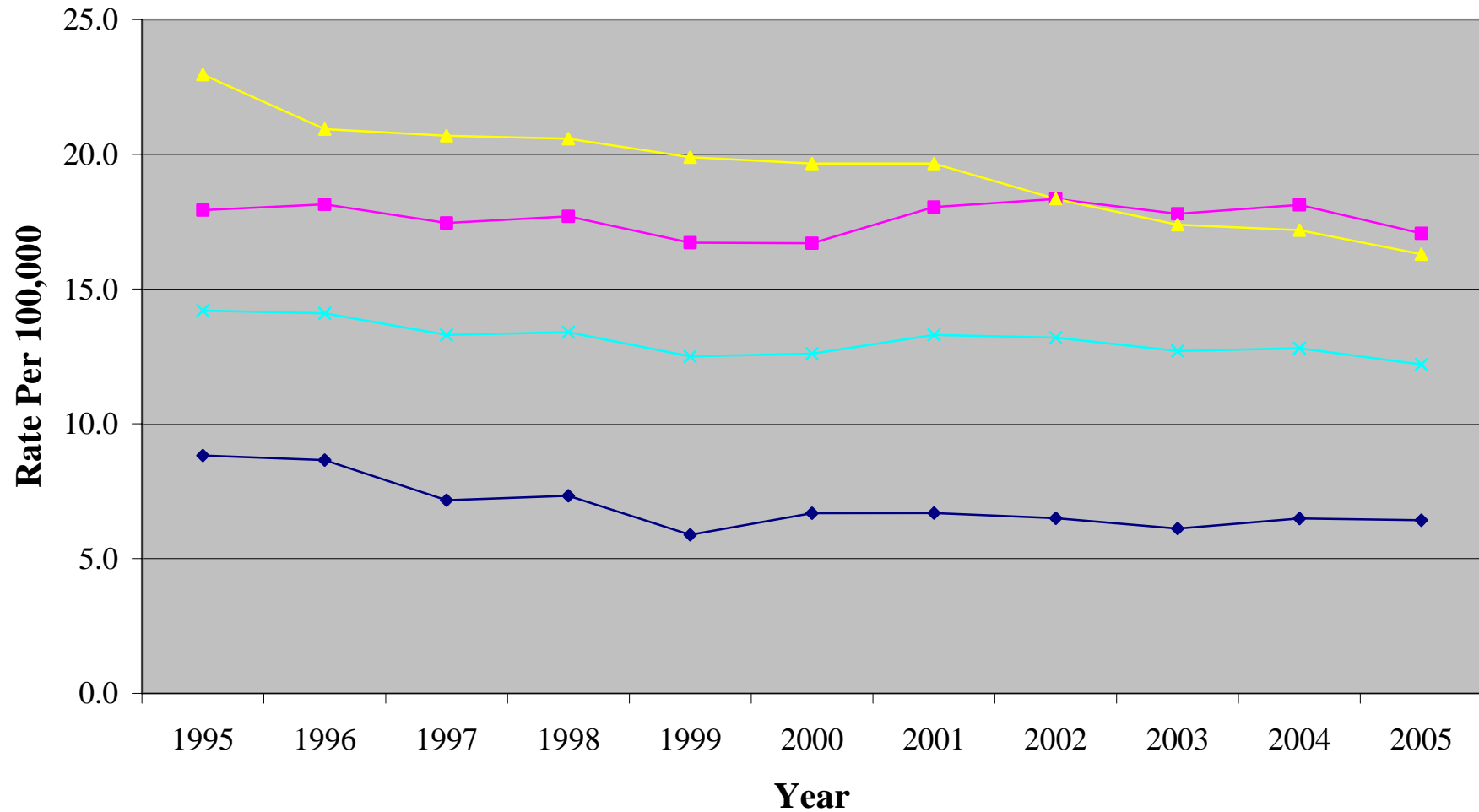
	1995	1996	1997	1998	1999	2000	2001	2002	2003	2004	2005
10 to 24	2,629,111	2,680,621	2,749,137	2,824,715	2,923,870	3,023,776	3,110,923	3,171,634	3,253,654	3,438,135	3,503,220
25 to 64	7,240,316	7,418,211	7,609,326	7,792,464	8,020,419	8,245,186	8,407,824	8,619,188	8,808,410	9,054,921	9,268,865
65 up	2,643,571	2,694,385	2,726,459	2,750,522	2,774,918	2,818,453	2,868,900	2,965,587	3,024,561	3,001,631	3,062,104

**Rates Per 100,000 Population**

	1995	1996	1997	1998	1999	2000	2001	2002	2003	2004	2005
10 to 24	8.8	8.7	7.2	7.3	5.9	6.7	6.7	6.5	6.1	6.5	6.4
25 to 64	17.9	18.1	17.5	17.7	16.7	16.7	18.0	18.3	17.8	18.1	17.1
65 up	23.0	20.9	20.7	20.6	19.9	19.7	19.7	18.3	17.4	17.2	16.3
All Ages	14.2	14.1	13.3	13.4	12.5	12.6	13.3	13.2	12.7	12.8	12.2

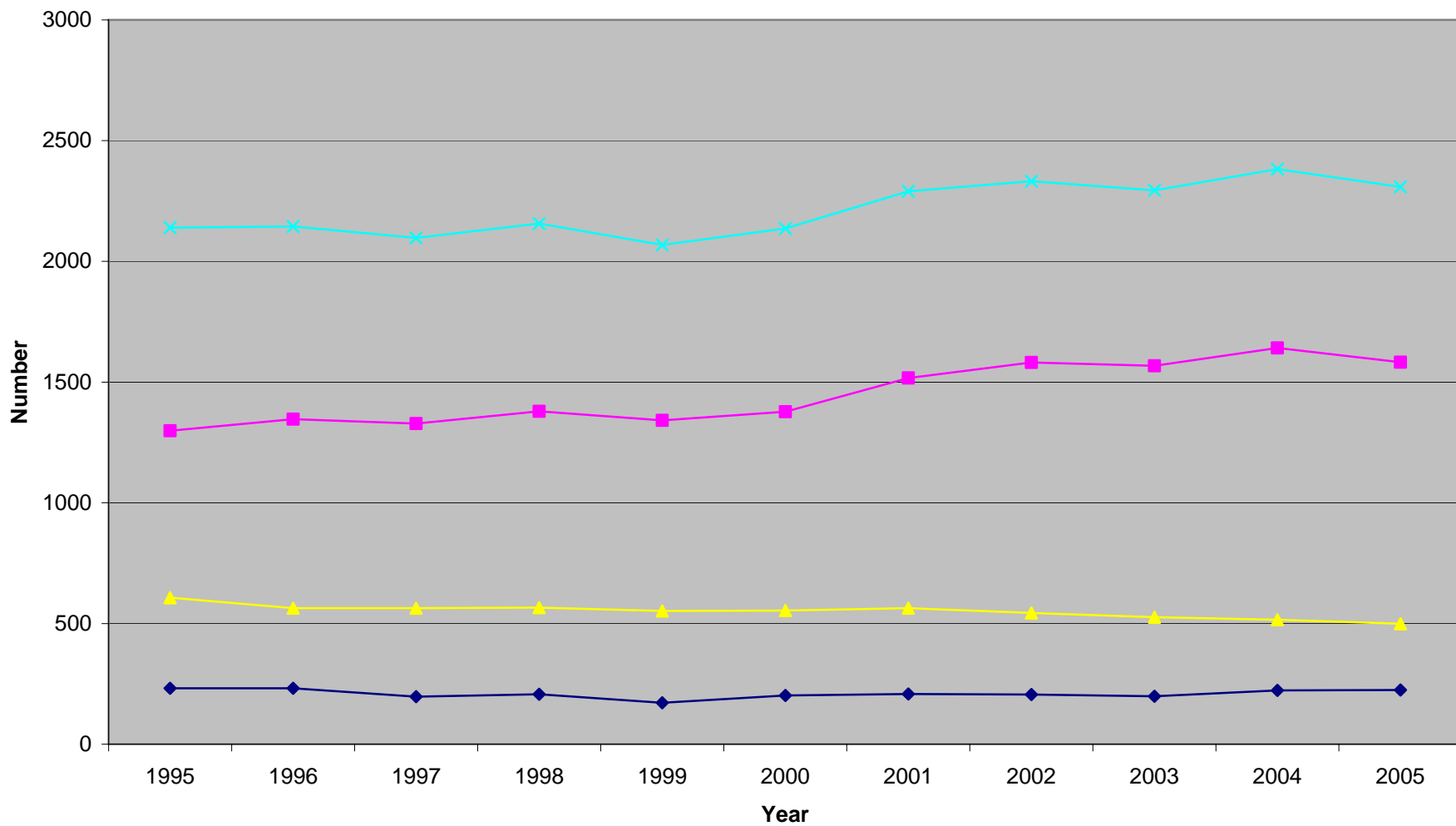
Data Sources: Death certificate and population data via [www.FloridaCHARTS.com](http://www.FloridaCHARTS.com), Florida Department of Health.

## Suicide Rates Per 100,000 Florida Residents 1995-2005



◆ 10 to 24    ■ 25 to 64    ▲ 65 up    × All Ages

# Number of Suicides of Florida Residents 1995-2005



◆ 10 to 24    ■ 25 to 64    ▲ 65 up    × All Ages