

# *Child Abuse Prevention and Permanency Plan for Circuit 19: July 2010 through June 2015*

**Counties Served:** Indian River, Martin,  
Okeechobee and Saint Lucie

**Circuit Conveners for the Local Planning Team:**

Cheri Sheffer

*Printed/Typed Name*

*Cheri Sheffer*  
*Signature*

5/27/2010

*Date*

**Acting Circuit Administrator:**

Lorrene Egan

*Printed/Typed Name*

*Lorrene Egan*  
*Signature*

5/27/2010

*Date*

Together we can ensure that Florida's children are raised in healthy, safe, stable and nurturing family environments.



## **Circuit 19 Child Abuse Prevention and Permanency Plan**

### **Part 1- Introduction to the Plan**

#### **II. PROCESS USED TO DEVELOP THE PLAN**

##### **A. Who Led the Planning Effort?**

In addition to the membership specified in the organizing statutes, many community leaders and service providers engaged in the planning activities. The planning effort was facilitated by Cheri Sheffer, Circuit 19 Community Relations Manager for the Department of Children and Families.

##### **B. Description of the Circuit and the counties in the Circuit**

Circuit 19 is the smallest Circuit in the State of Florida based on population, and includes the four counties of Martin, Indian River, Okeechobee and Saint Lucie. Geographically, our boundaries spread westward from the Treasure Coast's sandy shores, to the more rural community surrounding Lake Okeechobee. Agriculture, tourism, and construction are the primary industries in the Circuit. Efforts are ongoing to transform our area into one that emphasizes research and development by attracting knowledge-based research institutions to the area. Caused in part by a lack of strong diversification of employment opportunities and dependence upon construction, our Circuit has been hit especially hard by the nationwide recession, posting record high unemployment figures reaching 13.8% in November 2009. All four of our counties exceed the November state rate of 11.5%, with Saint Lucie County, ranking third, joining Indian River, ranking fifth, as two of the five counties with the highest unemployment rates in the state.

Each county maintains a unique identity and specific challenges as relates to the risk factors that contribute to or occur in tandem with child abuse and neglect. Our most populous county is Saint Lucie, which accounts for almost half of the Circuit's social service business and is home to the city of Port Saint Lucie, which has in the past been identified as one of the fastest growing cities in the United States, and currently experiences one of the highest foreclosure rates in the state.

##### **C. Brief Narrative description of the membership of the planning team**

Our Circuit has enjoyed successful resolution of multi-systemic challenges due in large part to our county-level coordination structure, the Shared Services Roundtables. Roundtables in Martin, St. Lucie and Okeechobee and a mental health collaborative network in Indian River County work together to address county-level, cross-systemic issues and initiatives, while using the all-county Alliance as a vehicle to approach Circuit-wide or multi-county issues. In addition to the statutorily required membership on the Planning team, concerted and sustained efforts were made to ensure active representation of all four counties through involvement of Roundtable and Alliance members from each county. Community organizations positioned to impact any of the risk factors associated with child abuse prevention

and adoption promotion and support were actively involved. Members who were not able to sustain an active presence at meetings were consulted as needed, kept informed and offered opportunities to provide input through email.

#### **D. Overview of the meetings held**

Continuing the momentum established during the completion of the 18-month update to the 2005-2010 plan, the team continued the bi-monthly meeting schedule to ensure implementation and reporting on those initiatives was ongoing. A Steering Committee meets prior to the full team meeting to develop agenda and priorities for the meeting. Our team established three action step subcommittees to address our chosen initiatives, and a committee to undertake the primary and secondary asset mapping portion of the plan. Each committee is led by one or more steering committee members, and met multiple times between our bimonthly meetings to complete the action plan for the initiatives our Circuit selected. The Shared Services Alliance of Okeechobee and the Treasure Coast reviewed the progress of the team at bi-monthly Alliance meetings, and provided specific assistance with membership recruitment, technical assistance and task completion as requested by the team.

#### **E. Overview of the plan development process**

Local Planning Team representatives selected to participate in the May 2009 and August 2009 statewide technical assistance conferences served as steering committee members for the 2010-2015 plan development process. The steering committee facilitated the process by which our team determined the State-recommended initiatives for local implementation, and each served as a subcommittee lead for a chosen initiative. Bi-monthly updates were provided to the Shared Services Alliance of Okeechobee and the Treasure Coast.

At the outset of our planning efforts, we completed an examination of approaches which were and were not successful in the implementation of our previous five-year plan. This examination resulted in a philosophical planning approach focused on avoiding duplication of effort or establishment of new initiatives. All planning efforts included identification and examination of the processes and initiatives currently in place in within each county of our community, and a deliberate focus on how our plan could complement and enhance the efforts already underway. The merits of this approach include its contribution to bringing other community partners to the table as they saw that the planning team recognized and valued their existing efforts.

Through this process, we identified two initiatives, Developmental Assets and Kids at Hope which are already being incorporated through cooperative stakeholder groups into the culture of various community systems and organizations.

## **Nexus between Strengthening Families, Developmental Assets and Kids at Hope**

The relationship between the presence of strong protective factors in families to successful child abuse prevention and permanency efforts has long been recognized in our community. Strategies within our 2005-2010 Child Abuse Prevention plan included the introduction and promotion of Developmental Assets within community organizations. Developmental Assets has been identified by the Search Institute as building blocks of healthy development that help young people grow up healthy, caring and responsible. Kids at Hope is a movement that seeks to establish a community wide culture of hope, in which every child is validated as capable of success, no exceptions.

Our team conducted an exhaustive comparison of the state-recommended Family strengthening initiative with the currently utilized and successful concepts of Developmental Assets and Kids at Hope. We concluded that the five protective factors of the Family Strengthening framework are already built in our community through Developmental Assets and Kids at Hope. The team strongly believes that sustained use and growth of Developmental assets and Kids at Hope will result in a unified effort that supports children and families through every natural encounter. Our community has chosen to utilize Developmental Assets and Kids at Hope as our vehicles for accomplishing the implementation of the five protective factors.

The following committees were established:

1. Whole Child Expansion Committee
2. Strengthening Families Committee
3. Adoption Promotion and Support Committee
4. Child Maltreatment Prevention programs asset mapping committee

Each subcommittee was charged with completion of five year plan strategies, objectives and action steps to accomplish the initiative. Three of the four committees are structured to remain intact and complete implementation of action steps, progress analysis and reporting throughout the five year plan period. This charge includes ongoing identification and recruitment of community partners whose involvement will further the efforts of the team in plan implementation.

The resultant plan is one that we believe reflects the spirit, the processes and the individuality of each of our counties. The plan is structured to provide forward momentum to county level initiatives, while positioning the local planning team to coordinate, guide, track, and demonstrate the impact of county level initiatives on the goal to reduce child maltreatment in Circuit 19.

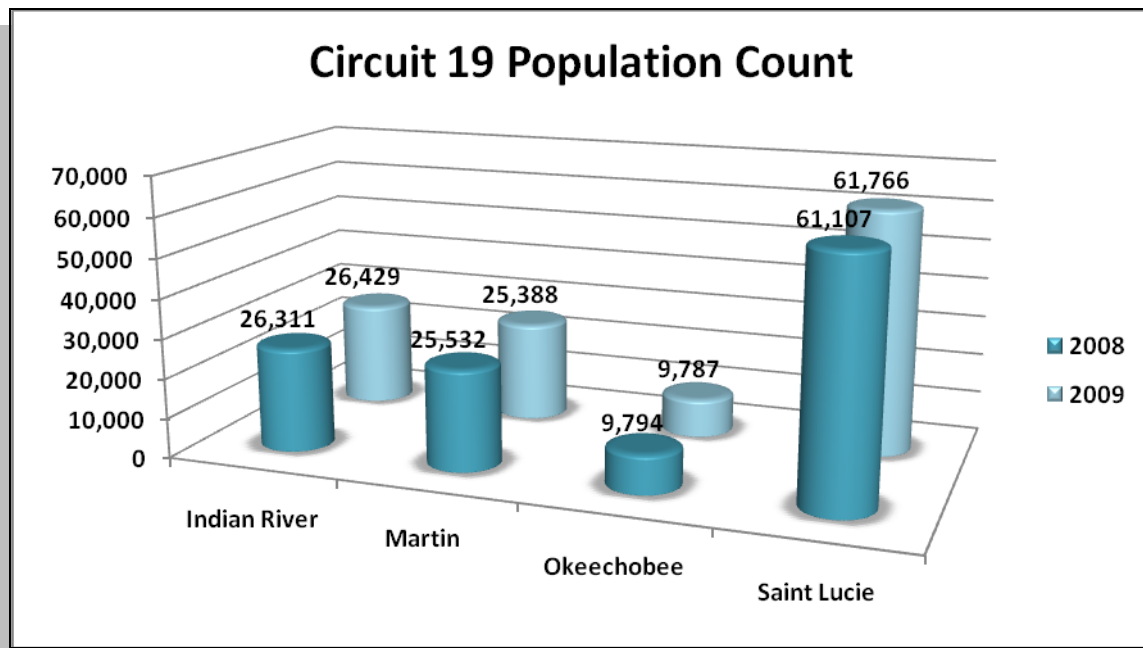
## **PART 2 – PLAN FOR THE PREVENTION OF ABUSE, ABANDONMENT, AND NEGLECT OF CHILDREN**

### **I. STATUS OF CHILD MALTREATMENT**

*Status of child maltreatment (including the documentation of the magnitude of the problems of child abuse, including sexual abuse, physical abuse, and emotional abuse, as well as child abuse, abandonment, and neglect in the geographical area) §39.001(8)(b)6.a*

#### **Child Population and Child Abuse Reporting**

Circuit 19 contained 2.9% of the total child population in the state of Florida during Fiscal year 2008-2009. The Circuit experienced a very minimal (.55%) increase in the overall number of children living on the Treasure Coast, when compared with Fiscal year 2007-2008. Martin County posted a small increase in black and other children, and a .7% decrease in white children, resulting in a net decrease in the population of children for that county. Circuit-wide by race, white children accounted for 65% of the overall growth, black children 26%, and children classified as other accounted for less than 9%.

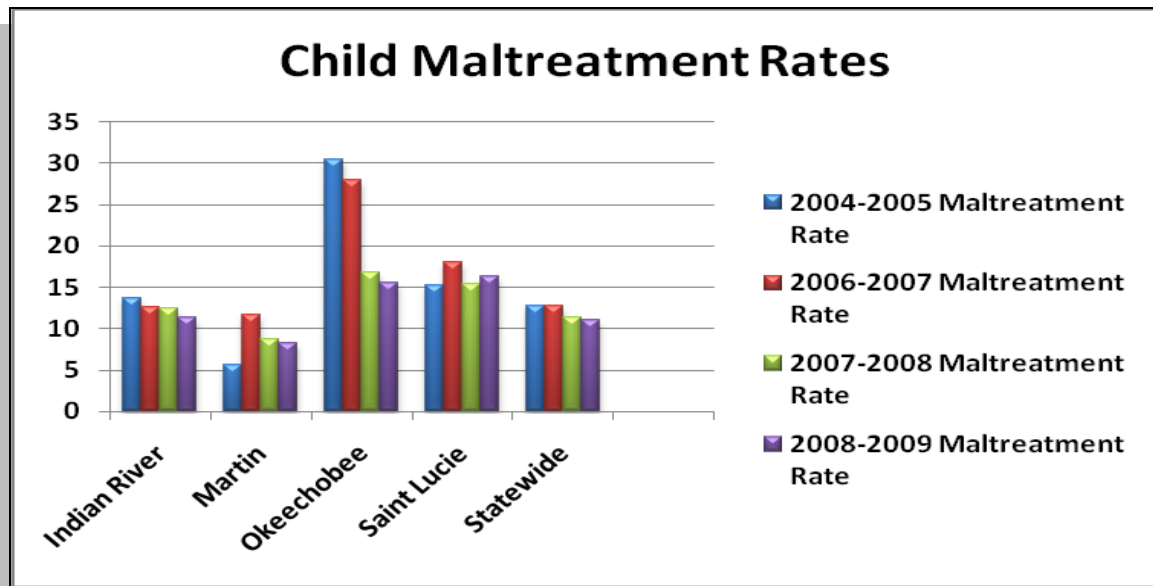


The number of Abuse Hotline calls accepted for investigation in Circuit 19 decreased from 7,399 representing 6.03% of the total child population in 2007-2008 to 5,622, or 4.56% of the population in 2008-2009.

#### **Maltreatment Rate**

Our Circuit as a whole has seen a decrease in the verified child maltreatment rate since the 2004-2005 fiscal year and is currently at 11.29, compared with the statewide rate of 11.08. Indian River County is closest to the state average, and its downward trend has been gradual. Martin County consistently experiences the lowest rate in our Circuit, and has consistently remained below the state average. Okeechobee County had the highest maltreatment rate in the Circuit in 2004, well above the state average, and has experienced a dramatic reduction in that rate beginning with the 2008 fiscal year. St. Lucie County is the only county that posted an

increase between Fiscal years 2008 and FY 2009. Because St. Lucie County typically comprises half of our Circuit's abuse and neglect cases, and is one of two counties in our Circuit that has a maltreatment rate significantly higher than the state average, this is a concerning finding.



The percent of total reports with a most serious finding of verified decreased in all counties and with the exception of Indian River County, which sustained an increase in the percent of reports verified. However, it is important to note that, as an additional 29% of 2008-2009 reports included some indicators of abuse or neglect in our Circuit, 54% of the families for whom allegations resulted in an investigation were determined to be at elevated levels of risk.

**2007-2008 Unduplicated Count of Victims by Most Serious Finding**

County	No Indication	Some Indication	Verified	Total
Indian River	634	363	327	1,324
Martin	633	380	224	1,237
St Lucie	1,873	1,168	945	3,986
Okeechobee	464	224	164	852
Circuit total	3,604	2,135	1,660	7,399

**2008-2009 Unduplicated Count of Victims by Most Serious Finding**

County	No Indication	Some Indication	Verified	Total
Indian River	479	329	250	1,058
Martin	437	303	175	915
St Lucie	1,293	865	841	2,999
Okeechobee	366	157	127	650
Circuit 19	2,575	1,654	1,393	5,622

**Most Commonly Occurring Allegation**

In all four counties the most commonly occurring allegation for FY 2008-2009 was substance misuse, accounting for 22% of all abuse allegations. The chart below illustrates the four of our 19 maltreatment categories in which verified maltreatment most often occurred in Circuit 19. Each county had a different highest maltreatment category, as indicated by highlighting on the chart below.

**FY 2008-2009 Verified Maltreatment by County**

Percent of all Verified Findings	Family Violence threatens child	Substance misuse	Inadequate supervision	Environmental Hazards
Circuit 19	23.51%	20.31%	12.86%	6.33%
Indian River	11.6%	24.53%	15.59%	8.73%
Martin	21.54%	22.77%	11.69%	1.85%
Okeechobee	31.33%	13.25%	12.85%	4.02%
St Lucie	26.38%	19.61%	12.25%	6.91%

While the incidence of Substance Misuse decreased from 26% of our verified cases in 2007 to 20% in 2009, and Family Violence Threatens Child increased from 21% of our Circuit's verified maltreatments in 2007 to almost 24%, both have remained consistent players in abuse and neglect cases in all four counties.

The broader maltreatment category of threatened harm, which can include multiple factors of many of the other maltreatment categories, accounted for 17% of the Circuit's verified findings. In descending order of frequency, the maltreatment categories of physical injury, failure to protect, sexual abuse and medical neglect accounted for between 3% and 6% each of the total verified abuse findings for our Circuit. Verified findings in the remaining categories, including the frequency for which allegations were verified by category, are detailed below. Highlighting indicates the top five most frequently verified categories for that county.

**Circuit 19 Alleged vs. Verified Maltreatment Counts for the 12 month Period June 2008 – May 2009**

County	Maltreatment	Alleged Total	Verified Total	% of Verified Maltreatments	County	Maltreatment	Alleged Total	Verified Total	% of Verified Maltreatments
Indian River	Abandonment	0	0	0%	Martin	Abandonment	5	0	0%
	Asphyxiation	9	0	0%		Asphyxiation	10	0	0%
	Bizarre Punishment	9	1	11%		Bizarre Punishment	10	0	0%
	Bone Fracture	33	2	6%		Bone Fracture	9	1	11%
	Burns	16	0	0%		Burns	9	0	0%
	Death	2	1	50%		Death	1	1	100%
	Environmental Hazards	303	42	14%		Environmental Hazards	271	6	2%
	Failure to Protect	57	33	58%		Failure to Protect	17	6	35%
	Failure to Thrive	3	0	0%		Failure to Thrive	2	0	0%
	Family Violence Threatens Child	307	56	18%		Family Violence Threatens Child	289	70	24%
	Inadequate Supervision	379	75	20%		Inadequate Supervision	338	38	11%
	Internal Injuries	0	0	0%		Internal Injuries	1	0	0%
	Malnutrition/Dehydration	1	0	0%		Malnutrition/Dehydration	0	0	0%
	Medical Neglect	46	11	24%		Medical Neglect	55	15	27%
	Mental Injury	80	11	14%		Mental Injury	68	6	9%
	Physical Injury	230	26	11%		Physical Injury	215	22	10%
	Sexual Abuse	94	24	26%		Sexual Abuse	74	14	19%
	Substance Misuse	629	118	19%		Substance Misuse	535	74	14%
	Threatened Harm	427	81	19%		Threatened Harm	377	72	19%



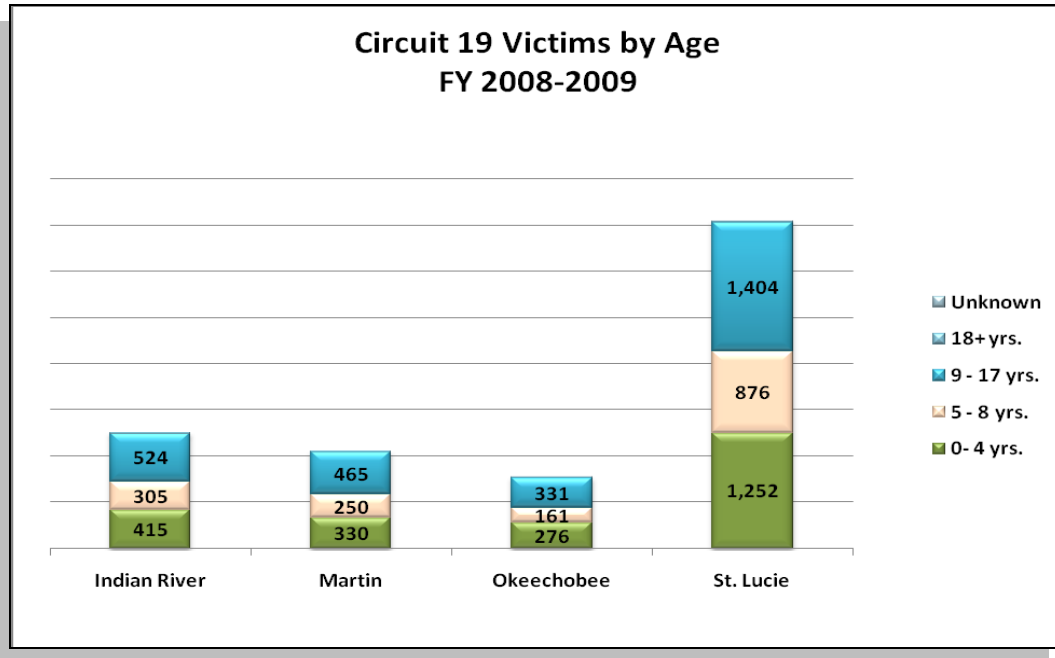
County	Maltreatment	Alleged Total	Verified Total	% of Verified Maltreatments	County	Maltreatment	Total	Verified Total	% of Verified Maltreatments
Okeechobee	Abandonment	5	0	0%	Saint Lucie	Abandonment	8	0	0%
	Asphyxiation	8	0	0%		Asphyxiation	24	6	25%
	Bizarre Punishment	4	0	0%		Bizarre Punishment	9	4	44%
	Bone Fracture	5	2	40%		Bone Fracture	17	4	24%
	Burns	9	0	0%		Burns	32	4	13%
	Death	3	1	33%		Death	6	3	50%
	Environmental Hazards	190	10	5%		Environmental Hazards	785	106	14%
	Failure to Protect	23	11	48%		Failure to Protect	83	38	46%
	Failure to Thrive	0	0	0%		Failure to Thrive	3	0	0%
	Family Violence Threatens Child	217	78	36%		Family Violence Threatens Child	1026	405	39%
	Inadequate Supervision	261	32	12%		Inadequate Supervision	1017	188	18%
	Internal Injuries	1	0	0%		Internal Injuries	2	2	100%
	Malnutrition/Dehydration	3	0	0%		Malnutrition/Dehydration	1	1	100%
	Medical Neglect	45	8	18%		Medical Neglect	155	53	34%
	Mental Injury	41	5	12%		Mental Injury	178	25	14%
	Physical Injury	136	10	7%		Physical Injury	606	96	16%
	Sexual Abuse	59	14	24%		Sexual Abuse	189	48	25%
	Substance Misuse	328	33	10%		Substance Misuse	1518	301	20%
	Threatened Harm	255	45	18%		Threatened Harm	1191	251	21%

The allegation of failure to protect, a category used in many investigations to address inaction of one parent to safeguard their children from a violent situation occurring within the home, is among the top five verified categories for each of our counties. This serves to further emphasize the presence of family violence in the homes of many of our victims.

## Demographics of child subjects of investigations

### Age

While 59% of allegations were for children under the age of nine, 72% of our Circuit's child victims of verified abuse were under the age of nine. 51% of abuse victims are age five or under.



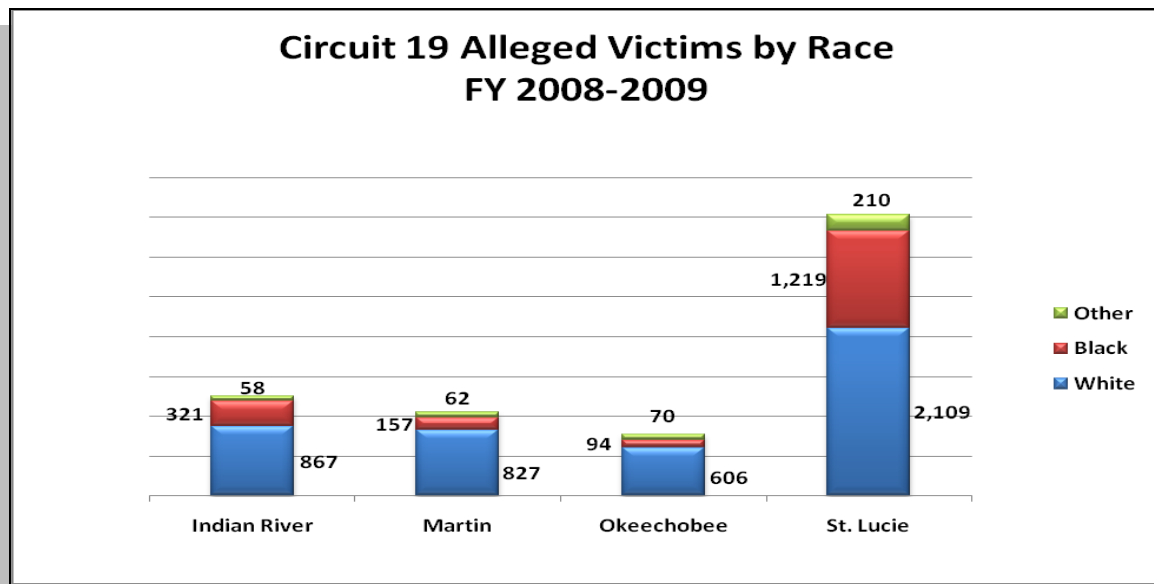
### Percent of victims with most serious finding of verified by age

County	Age 0-4 years	Age 5-8 Years	Age 9-17	18+ years
Circuit-wide	34%	24%	41%	.06%
Indian River	33%	24%	42%	.08%
Martin	32%	24%	44%	0%
Okeechobee	36%	21%	43%	0%
St. Lucie	35%	25%	43%	0%

## Race

At both the state and Circuit level, a higher than average number of investigations are conducted for children identified as black and as other when compared to the representative percentage of the population for these races. In Circuit 19, black children, representing 19% of the population, were the subject of 26% of our investigations and 25% of our verified findings in fiscal year 2008.

This information seems to suggest that primary and secondary abuse prevention efforts that we concentrate within child development programs and elementary school programs, with a focus on those that serve black families, may assist us in successfully reaching our target audience.



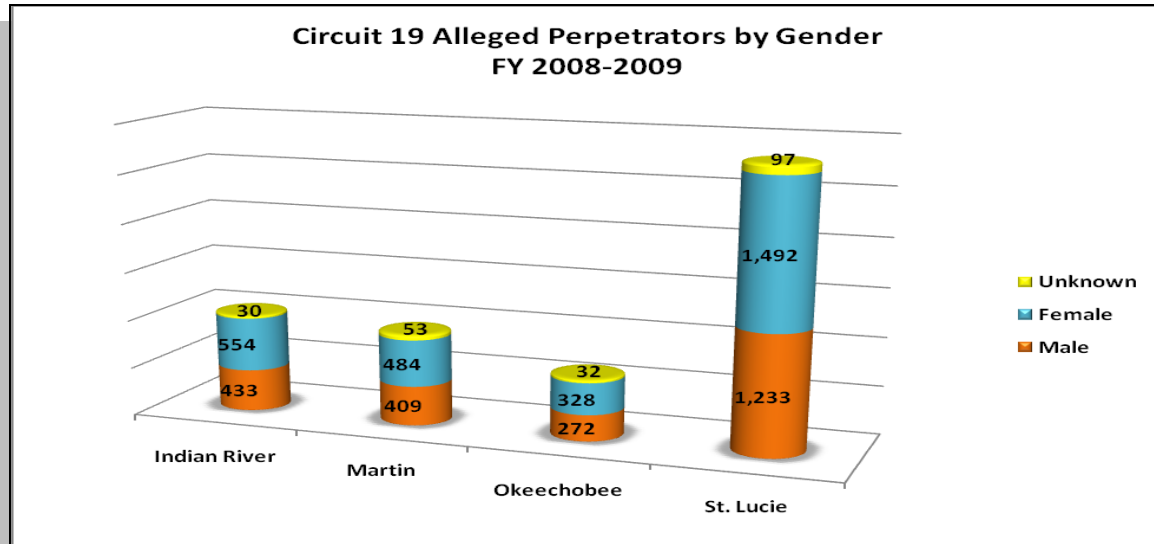
## Demographics of perpetrators

AGE				
County	< 18 yrs.	18 - 25yrs.	26+ yrs.	Unknown
Indian River	1%	18%	81%	1%
Martin	1%	17%	79%	2%
Okeechobee	1%	20%	78%	2%
St Lucie	1%	22%	76%	1%
Circuit wide	1%	20%	78%	1%

78% of alleged perpetrators are over the age of 26. St. Lucie county posted a higher percentage of perpetrators in the 18-25 year old category. In all counties, most perpetrators were female.

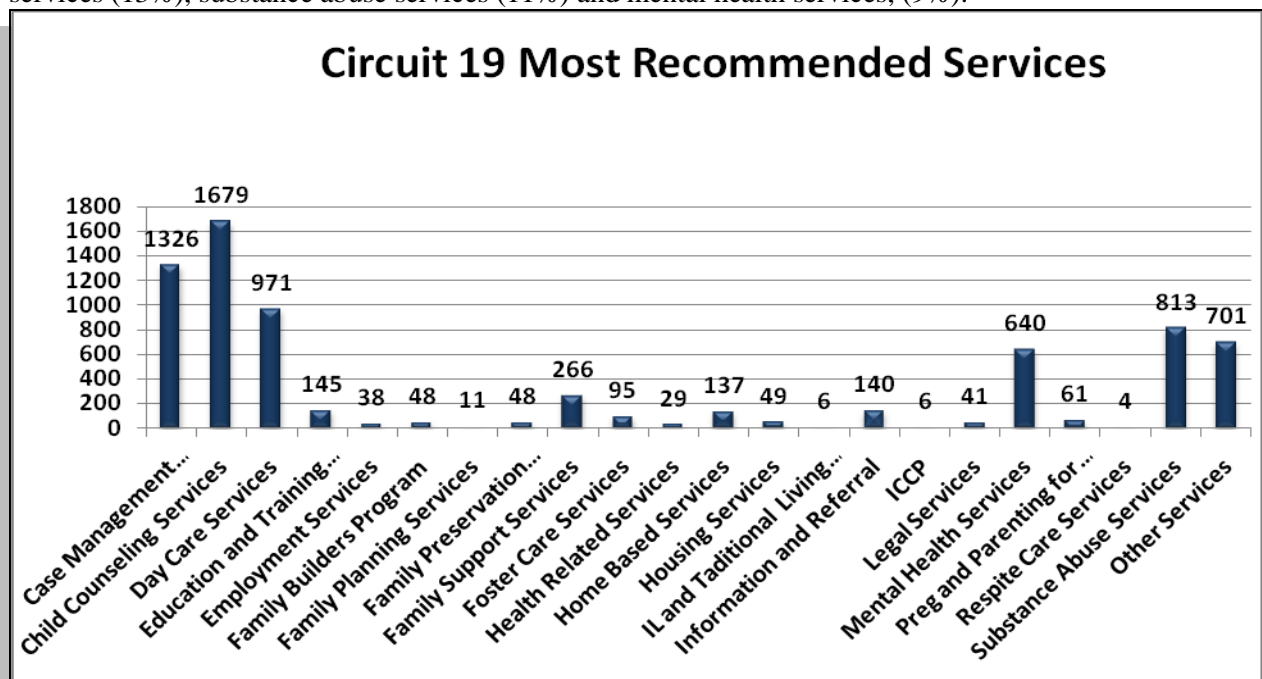
2008 data obtained from Florida CHARTS (Community Health Assessment Resource Tool Set) highlighted provides rankings for counties from first quartile (most favorable) to fourth quartile (least favorable). In the category of Pregnancy and Young Child profile, Okeechobee received 14

ratings in the third or fourth quartile, out of 19 categories, and St. Lucie received 12 ratings in the third or fourth quartile. Indian River and Martin counties received, respectively, eight out of 19, and nine out of 19, in the two least favorable quartiles. When considered with our county level maltreatment statistics, a potential pattern behind maltreatment rates in St Lucie and Okeechobee which are significantly higher than the state average begins to emerge.



### Recommendations for Services

There were 7,254 service referrals made as a result of child protective investigations in Circuit 19 to 23 different types of services. It is important to recognize that in many cases, families may receive more than one service referral. The most frequently referred services are child counseling services, accounting for 50% of total referrals, case management services (18%), day care services (13%), substance abuse services (11%) and mental health services, (9%).



## **II. CONTINUA OF PRIMARY AND SECONDARY PREVENTION PROGRAMS**

*A continuum of programs necessary for a comprehensive approach to prevention of all types of child abuse, abandonment, and neglect (including brief descriptions of such programs and services) §39.001(8) (b) 6.f*

It is the intent of this planning effort to prevent child abuse, abandonment, and neglect before it ever occurs. Thus, for the purpose of this prevention plan, the continuum of programs (necessary for a comprehensive approach to prevention of all types of child abuse, abandonment, and neglect) focuses on the first two of the three levels of prevention and prevention-focused strategies:

<b>Primary using Universal Strategies</b>	<b>Secondary using Selected Strategies</b>	<b>Tertiary using Indicated Strategies</b>
Primary prevention is geared to the general public to prevent child maltreatment from ever occurring. Universal strategies are accessible to anyone with the goal of preventing child maltreatment from ever occurring in the first place.	Secondary prevention is geared to communities and families who are vulnerable and at risk of child maltreatment (e.g., have multiple risk factors – parent age, poverty, substance abuse, domestic violence, maternal depression). Targeted strategies assist these vulnerable groups with the goal of preventing child maltreatment from ever occurring in the first place.	Tertiary prevention consists of activities targeted to families that have confirmed or unconfirmed child abuse and neglect reports. These families have already demonstrated the need for intervention, either with or without court supervision. These are families that qualify for services under child welfare programs. These are families where there is an open case.

**II.A. CONTINUUM OF PRIMARY/UNIVERSAL PREVENTION PROGRAMS AND SERVICES** *Accessible by the general public prior to the occurrence of child abuse and neglect*

**Community Development** – Community capacity building, community partnerships, etc.

**Community Support for Families** – Family resource centers, community events and fairs, etc.

**Family Supportive Programs/Services** – Voluntary home visiting; developmental screening; affordable, accessible quality childcare; before and after school programs; recreational activities; parent support groups; parent education classes; marriage and relationship counseling and support services; etc.

**Information and Referral and Helplines** – Access to information about community and social services available for families including early health and development services, etc.

**Public Awareness and Education Campaigns** – Highlighting risk/protective factors, child development, positive parenting, child safety, domestic violence and substance abuse prevention, bullying prevention, etc.

**Workforce** – Family-friendly workplace policies, livable wage policies, etc.

**II.B. CONTINUUM OF SECONDARY/SELECTED PREVENTION PROGRAMS AND SERVICES** *Targeted to families with multiple risk factors prior to the occurrence of child Abuse and Neglect*

**Adult Education** – High School Diploma, GED, job training, ESL classes, mentoring for high risk youth, etc.

**Community Development** – Community building, community partnerships, etc.

**Community Support for Families** – Food banks, clothing banks, housing assistance, transportation, emergency assistance, food stamps, quality childcare, etc.

**Concrete Services** – Referrals for (or provision of) clothing, food, utility payments, housing assistance, transportation, emergency assistance, respite care, etc.

**Family Supportive Programs/Services** – Voluntary home visiting (e.g., for families that meet Healthy Families Florida and Healthy Start criteria), parent education classes, teen parenting services, parent self-help support groups, domestic violence supports, substance abuse and mental health services, respite care (including families with disabilities), counseling for adults and children, developmental assessments, etc.

**Workforce** – Family-friendly workplace policies and livable wage policies, etc.

## **II.C. FLORIDA'S ECOLOGICAL FRAMEWORK**

Florida's ecological framework serves to organize the potential influence and impact of prevention strategies and is based on the following assumptions:

- Children and families exist as part of an ecological system. This means that prevention strategies must target interventions at multiple levels: the individual, the relationship, the community, and society.
- Primary responsibility for the development and well-being of children lies within the family, and all segments of society must support families as they raise their children.
- Assuring the well-being of all families is the cornerstone of a healthy society and requires universal access to support programs and services.

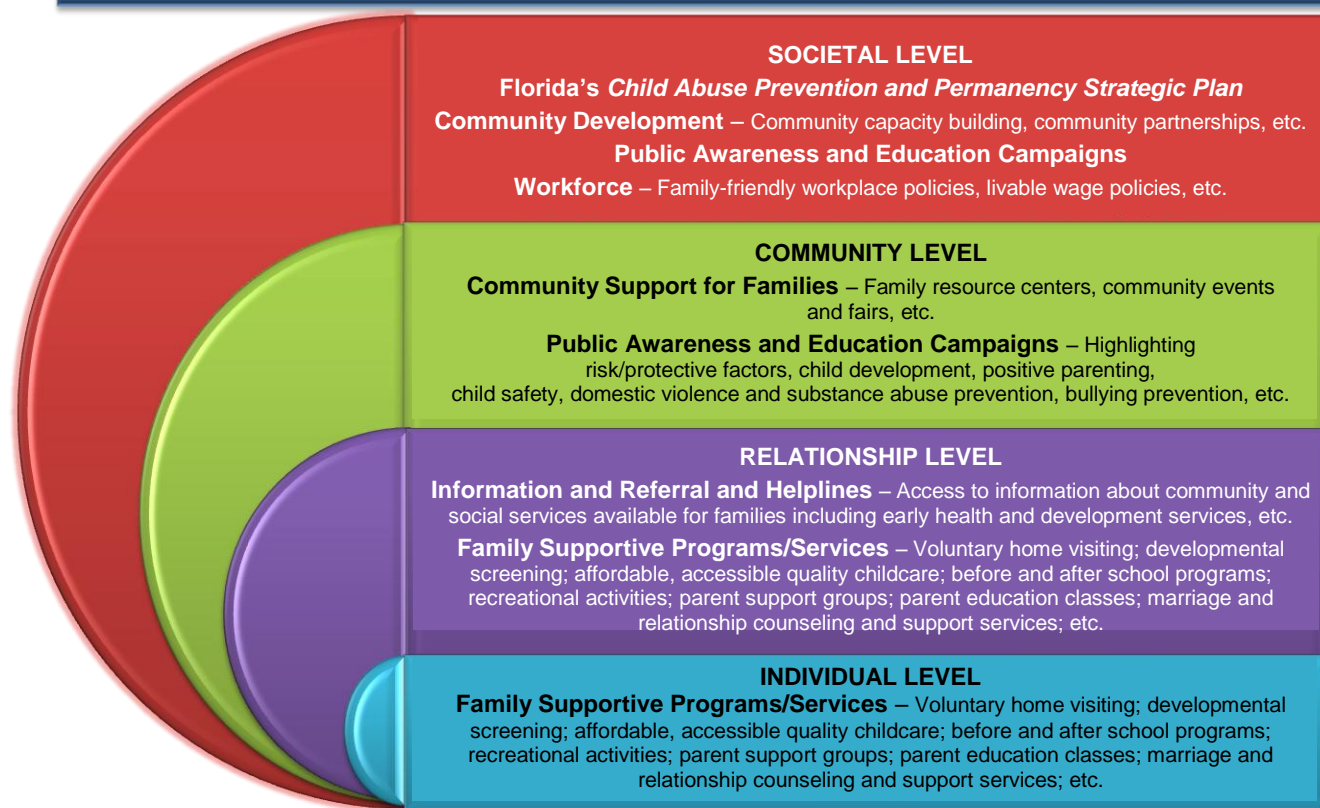
It comprises four levels of influence:

1. **Individual level:** At this level are **parent and child characteristics** – emotional and psychological characteristics, temperament, behavior, problem-solving skills, health conditions, and beliefs – that can affect the rearing of children. Interventions at this level are often designed to affect an individual's social skills, cognitive skills, behavior and immediate circumstances.
2. **Relationship level:** **Interpersonal relationships** with peers, intimate partners, and family members shape an individual's behavior and range of experiences. This level contains factors such as family size, cohesion, communication, support, conflict, and stability that directly affect the child and influence the way in which adults care for children and each other. Interventions at this level are often designed to improve a person's ability to engage in positive and constructive relationships, especially within the immediate family.
3. **Community level:** Families operate within **neighborhoods and communities**. Factors that characterize this level include availability of supports (governmental and community), stability, violence, poverty, disorganization, and isolation; all affect the ability of families and communities to nurture their children. Interventions at the community level are typically designed to impact the climate, systems and policies in a given (usually geographic) setting.
4. **Societal level:** The **larger culture** in which families operate and children are raised plays a significant role in how families care for their young. Religious or cultural belief systems, values such as self-reliance and family privacy, and the cultural acceptance of media violence and corporal punishment of children affect the way in which parents raise their children and the ways in which communities support families. Interventions at the societal level typically involve collaborations of multiple partners to change laws and policies as well as to determine and influence societal norms and harmful cultural belief systems.



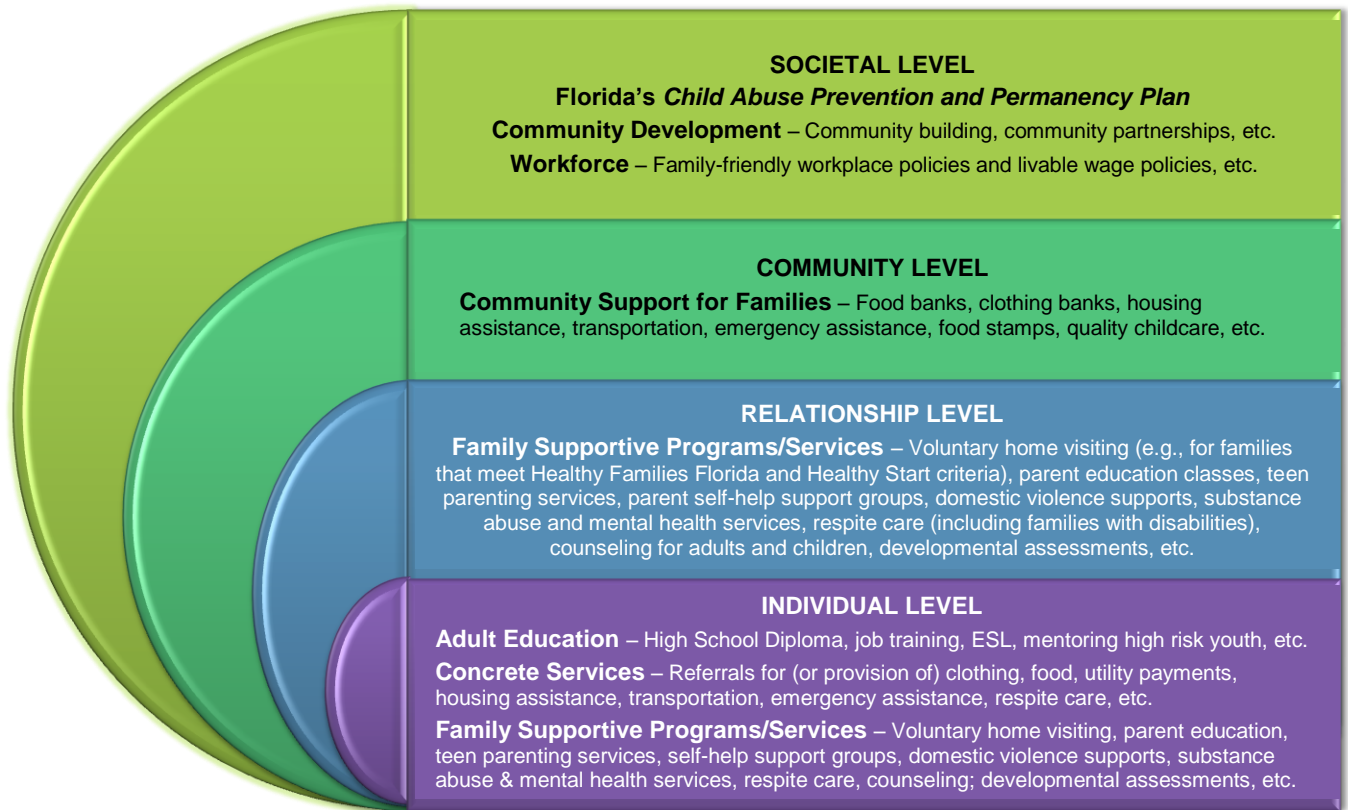
## Florida's Socio-Ecological Continuum of Primary/Universal Prevention Strategies

*Accessible by the General Public Prior to the Occurrence of Child Abuse and Neglect*



Example provided for illustrative purposes only for the CAPP Council from the Ounce of Prevention Fund of Florida

**Socio-Ecological Continuum of Secondary/Selected Prevention Strategies**  
*Targeted to Families with Multiple Risk Factors Prior to the Occurrence of Child Abuse and Neglect*



Example provided for illustrative purposes only for the CAPP Council from the Ounce of Prevention Fund of Florida

**III. PROGRAMS CURRENTLY SERVING CHILDREN WHO HAVE BEEN MALTREATED**

*Description of programs currently serving abused, abandoned, and neglected children and their families (including information on the impact, cost-effectiveness, and sources of funding)*

§39.001(8) (b) 6.b

This data has been collected and reported as a part of the Florida Child Abuse Prevention and Permanency Plan: January 2009 – June 2010 and have been updated within Florida's Child and Family Services Plan as submitted in June 2009.

#### **IV. CHILD MALTREATMENT PREVENTION PROGRAMS**

*Description of programs for the prevention of child abuse, abandonment, and neglect (including information on the impact, cost-effectiveness, and sources of funding) §39.001(8) (b) 6.b*

An asset mapping subcommittee of the local planning team was established and charged with the completion of an analysis of the primary and secondary child abuse prevention programs offered in Circuit 19. The subcommittee elected to use existing data within the 211 and Whole Child Connection databases, which was sufficiently expansive to allow initial categorization into primary and secondary categories, to form the backbone for our analysis.

The categorization of our programs as registered in the databases of 211 Palm Beach and Treasure Coast and Whole Child Connection is specified below:

#### **IV.A. PRIMARY/UNIVERSAL PREVENTION STRATEGIES – PROGRAMS ACCESSIBLE BY THE GENERAL PUBLIC PRIOR TO THE OCCURRENCE OF CHILD ABUSE AND NEGLECT**

##### **Societal Level**

- Community Development – Community capacity building, community partnerships, etc. **19 programs**
- Workforce – Family-friendly workplace policies, livable wage policies, etc. **3 Agencies**

##### **Community Level**

- Community Support for Families – Family resource centers, community events and fairs, etc. **32 programs**
- Public Awareness Education Campaigns – Highlighting risk/protective factors, child development, positive parenting, child safety, domestic violence and substance abuse prevention, etc. **45 programs**

##### **Relationship and Individual Level**

- Information and Referrals Helplines – Access to information about community and social services available for families including early health and development services, etc. **7 Agencies**
- Family Supportive Programs – Voluntary home visiting; developmental screening; affordable, accessible quality childcare; before and after school programs; recreational activities; parent support groups; parent education classes; marriage & relationship counseling and support services, etc. **131 programs**

#### **IV.B. SECONDARY/SELECTED PREVENTION STRATEGIES – PROGRAMS TARGETED TO FAMILIES WITH MULTIPLE RISK FACTORS FOR CHILD ABUSE PRIOR TO THE OCCURRENCE OF CHILD ABUSE AND NEGLECT**

*Note: Secondary prevention is geared to communities and families who are vulnerable and at risk of child maltreatment (e.g., have multiple risk factors – parent age, poverty, substance abuse, domestic violence, maternal depression). Targeted strategies assist these vulnerable groups with the goal of preventing child maltreatment from ever occurring in the first place.*

##### **Societal Level**

- Community Development – Community building, community partnerships, etc. **10 programs**
- Workforce - Family-friendly workplace policies, livable wage policies, etc. **4 Agencies**

##### **Community Level**

- Community Support for Families – Food banks, clothing banks, housing assistance, transportation, emergency assistance, food stamps, quality childcare, etc. **91 programs**

##### **Relationship level**

- Family Supportive Programs/Services – Voluntary home visiting, parent education classes, teen parenting services, parent self-help support groups, domestic violence supports, substance abuse and mental health services, respite care, counseling for adults and children, developmental assessments, etc. **120 programs**

##### **Individual Level**

- Adult Education – High School Diploma, GED, job training, ESL classes, mentoring for high risk youth, etc. **34 programs**
- Concrete Services – Referrals for clothing, food, utility payments, housing assistance, transportation, emergency assistance, respite care, etc. **99 programs**

##### **Asset Mapping Analysis**

A Circuit-specific survey was utilized to capture additional information. The survey was directed to all agencies included within the 211 and Whole Child databases and, in addition to the program-specific information being gathered statewide, requested information on the agencies' waiting list experiences and public awareness campaigns.

A total of 32 Circuit 19 agencies participated in our Circuit specific survey. As a result, the information extracted and resulting analysis does not fully or accurately reflect services available in our Circuit. Of the participants:

- 43% provided information on most recent impact data and cost effectiveness data. This result seems to indicate a need for additional local understanding of the context of these questions. Although the results were incomplete, the exercise proved valuable as it illustrates a need for a shared process among funders by which this information can be collected and evaluated.
- 26 separate funding sources were identified.

- 56% responded to the local question regarding public awareness, media or education campaigns. Most do engage in education awareness activities centered around the agency's service. Very few engage in public awareness campaigns, such as PSA's TV Spots, Billboards, Print Ads, etc.
- 90% responded to the local question regarding length of waiting list for new clients wishing to access services. Most responded that there were no waitlists. One significant wait list for school readiness program services was identified.

### Protective Factors Analysis

All programs represented in the response identified at least one protective factor built by the strategy. Again, limited participation prevents us from drawing complete or fully accurate conclusions on the extent of understanding and implementation of current community initiatives within community organizations. The following percentages identify the frequency of occurrence of each protective factor within the programs who responded to the survey.

County	Parental emotional resilience	Social Connections	Knowledge of parenting and child development	Concrete support	Nurturing and attachment
St. Lucie	38%	50%	50%	66%	41%
Martin	42%	55%	58%	65%	48%
Okeechobee	46%	58%	58%	71%	46%
Indian River	46%	54%	58%	67%	42%

Highest factor occurring within programs in the county	Lowest factor occurring within programs in the county	County with lowest overall protective factors
--	---	---

As a result of the limited response to requests for protective factors information through our survey, additional information gathering will be necessary to comprehensively map the depth of infusion of protective factors in our local programs, and identify gaps and priorities.

However, we believe that the lower frequency of occurrence of the factors of Parental Emotional Resilience and Nurturing and Attachment in comparison to the remaining three protective factors may provide insight into the high incidence of substance abuse and domestic violence factors in our local maltreatment findings. Parents with lower tolerance for stressful situations may be more likely to abuse substances or engage in excessive physical responses to stressors, in spite of the availability of concrete supports, social connections or their training in child development. It is possible that a concentration of effort on further development of the Parental Emotional Resilience and Nurturing and Attachment factors may result in a reduction of the substance abuse and domestic violence maltreatments in our local statistics.

An inventory of primary and secondary programs that responded to our survey is included as Attachment I of this plan, and a compilation of other select agencies that contribute to our continuum of services is included as Attachment II.

## V. PLAN PRIORITIES

*A description, documentation, and priority ranking of local needs related to the prevention of child abuse, abandonment, and neglect based upon the continuum of programs and services. §39.001(8) (b) 6.g*

### **Priority Ranking of County-Level Needs Related to the Primary and Secondary Prevention of Child Abuse, abandonment, and neglect**

#### **County: Indian River**

<b>Priority</b>	<b>County-Level Need with Description</b>	<b>Level of Prevention Intervention Necessary to Address the Need</b> <input type="checkbox"/> Primary (Universal Strategies) <input type="checkbox"/> Secondary (Selected Strategies)	<b>Protective Factors that Should be Built/Supported when Meeting this Need</b> <input type="checkbox"/> Parental Emotional Resilience <input type="checkbox"/> Social Connections <input type="checkbox"/> Knowledge of Parenting and Child Development <input type="checkbox"/> Concrete Support in Times of Need <input type="checkbox"/> Nurturing and Attachment
1	<i>Reduce the incidence of verified abuse cases involving substance misuse.</i>	<i>Primary and secondary</i>	<b>Protective Factors that Should be Built/Supported when Meeting this Need</b> X Parental Emotional Resilience X Social Connections X Knowledge of Parenting and Child Development X Concrete Support in Times of Need X Nurturing and Attachment
2	<i>Reduce the incidence of verified abuse involving family violence</i>	<i>Primary and secondary</i>	<b>Protective Factors that Should be Built/Supported when Meeting this Need</b> X Parental Emotional Resilience X Social Connections X Knowledge of Parenting and Child Development X Concrete Support in Times of Need X Nurturing and Attachment
3	<i>Heighten the general public's awareness of and support for the resources needed and efforts ongoing to prevent child abuse in the community.</i>	<i>Primary</i>	<b>Protective Factors that Should be Built/Supported when Meeting this Need</b> X Parental Emotional Resilience X Social Connections X Knowledge of Parenting and Child Development X Concrete Support in Times of Need X Nurturing and Attachment

**County: Martin**

<b>Priority</b>	<b>County-Level Need with Description</b>	<b>Level of Prevention Intervention Necessary to Address the Need</b> <input type="checkbox"/> Primary (Universal Strategies) <input type="checkbox"/> Secondary (Selected Strategies)	<b>Protective Factors that Should be Built/Supported when Meeting this Need</b> <input type="checkbox"/> Parental Emotional Resilience <input type="checkbox"/> Social Connections <input type="checkbox"/> Knowledge of Parenting and Child Development <input type="checkbox"/> Concrete Support in Times of Need <input type="checkbox"/> Nurturing and Attachment
1	<i>Reduce the incidence of verified abuse cases involving Substance misuse</i>	<i>Primary and secondary</i>	<b>Protective Factors that Should be Built/Supported when Meeting this Need</b> X Parental Emotional Resilience <input type="checkbox"/> Social Connections <input type="checkbox"/> Knowledge of Parenting and Child Development <input type="checkbox"/> Concrete Support in Times of Need X Nurturing and Attachment
2	<i>Reduce the incidence of verified abuse cases involving family violence</i>	<i>Primary and secondary</i>	<b>Protective Factors that Should be Built/Supported when Meeting this Need</b> X Parental Emotional Resilience <input type="checkbox"/> Social Connections <input type="checkbox"/> Knowledge of Parenting and Child Development <input type="checkbox"/> Concrete Support in Times of Need X Nurturing and Attachment
3	<i>Heighten the general public's awareness of and support for the resources needed and efforts ongoing to prevent child abuse in the community.</i>	<i>Primary</i>	<b>Protective Factors that Should be Built/Supported when Meeting this Need</b> X Parental Emotional Resilience X Social Connections X Knowledge of Parenting and Child Development X Concrete Support in Times of Need X Nurturing and Attachment



**County: St. Lucie**

<b>Priority</b>	<b>County-Level Need with Description</b>	<b>Level of Prevention Intervention Necessary to Address the Need</b> <input type="checkbox"/> Primary (Universal Strategies) <input type="checkbox"/> Secondary (Selected Strategies)	<b>Protective Factors that Should be Built/Supported when Meeting this Need</b> <input type="checkbox"/> Parental Emotional Resilience <input type="checkbox"/> Social Connections <input type="checkbox"/> Knowledge of Parenting and Child Development <input type="checkbox"/> Concrete Support in Times of Need <input type="checkbox"/> Nurturing and Attachment
1	<i>Reduce the incidence of verified child abuse cases involving children under age 5.</i>	Primary and secondary	<b>Protective Factors that Should be Built/Supported when Meeting this Need</b> <input type="checkbox"/> Parental Emotional Resilience <input type="checkbox"/> Social Connections <input checked="" type="checkbox"/> Knowledge of Parenting and Child Development <input type="checkbox"/> Concrete Support in Times of Need <input type="checkbox"/> Nurturing and Attachment
2	<i>Reduce the incidence of verified abuse cases involving family violence.</i>	Primary and secondary	<b>Protective Factors that Should be Built/Supported when Meeting this Need</b> <input checked="" type="checkbox"/> Parental Emotional Resilience <input type="checkbox"/> Social Connections <input type="checkbox"/> Knowledge of Parenting and Child Development <input type="checkbox"/> Concrete Support in Times of Need <input checked="" type="checkbox"/> Nurturing and Attachment
3	<i>Heighten the general public's awareness of and support for the resources needed and efforts ongoing to prevent child abuse in the community.</i>	Primary	<b>Protective Factors that Should be Built/Supported when Meeting this Need</b> <input checked="" type="checkbox"/> Parental Emotional Resilience <input checked="" type="checkbox"/> Social Connections <input checked="" type="checkbox"/> Knowledge of Parenting and Child Development <input checked="" type="checkbox"/> Concrete Support in Times of Need <input checked="" type="checkbox"/> Nurturing and Attachment

**County: Okeechobee**

<b>Priority</b>	<b>County-Level Need with Description</b>	<b>Level of Prevention Intervention Necessary to Address the Need</b> <input type="checkbox"/> Primary (Universal Strategies) <input type="checkbox"/> Secondary (Selected Strategies)	<b>Protective Factors that Should be Built/Supported when Meeting this Need</b> <input type="checkbox"/> Parental Emotional Resilience <input type="checkbox"/> Social Connections <input type="checkbox"/> Knowledge of Parenting and Child Development <input type="checkbox"/> Concrete Support in Times of Need <input type="checkbox"/> Nurturing and Attachment
1	<i>Reduce the incidence of verified abuse cases involving family violence</i>	Primary and secondary	<b>Protective Factors that Should be Built/Supported when Meeting this Need</b> X Parental Emotional Resilience <input type="checkbox"/> Social Connections <input type="checkbox"/> Knowledge of Parenting and Child Development <input type="checkbox"/> Concrete Support in Times of Need X Nurturing and Attachment
2	<i>Reduce the incidence of verified abuse cases involving children under age five</i>	Primary and secondary	<b>Protective Factors that Should be Built/Supported when Meeting this Need</b> X Parental Emotional Resilience <input type="checkbox"/> Social Connections X Knowledge of Parenting and Child Development <input type="checkbox"/> Concrete Support in Times of Need X Nurturing and Attachment
3	<i>Heighten the general public's awareness of and support for the resources needed and efforts ongoing to prevent child abuse in the community.</i>	Primary	<b>Protective Factors that Should be Built/Supported when Meeting this Need</b> X Parental Emotional Resilience X Social Connections X Knowledge of Parenting and Child Development X Concrete Support in Times of Need X Nurturing and Attachment

## **VI. PLAN OF ACTION FOR THE PREVENTION OF CHILD ABUSE, ABANDONMENT, AND NEGLECT**

*A plan for steps to be taken in meeting identified needs, including the coordination and integration of services to avoid unnecessary duplication and cost, and for alternative funding strategies for meeting needs through the reallocation of existing resources, utilization of volunteers, contracting with local universities for services, and local government or private agency funding §39.001(8)(b)6.h*

### ***Vision***

Florida's highest priority is that children are raised in healthy, safe, stable, and nurturing families.

### ***Mission***

To serve as a blueprint that will be implemented to provide for the care, safety, and protection of all of Florida's children in an environment that fosters healthy social, emotional, intellectual, and physical development.

### ***Outcome***

All families and communities ensure that children are safe and nurtured and live in stable environments that promote well-being.

### ***Circuit Goal 1***

Goal 1.1: Increase the number of children living in St. Lucie, Martin, Indian River and Okeechobee Counties who are free from abuse abandonment and neglect and have safe, loving and permanent homes as measured by a five year downward trend in the county child abuse and neglect rate from the fiscal year 2008-2009 rate of: (Indian River County) **11.35**, (Martin County) **8.27**, (St. Lucie County) **16.34**; (Okeechobee County) **15.57**. It is anticipated that a steady, significant decrease in the child abuse and neglect rate will occur over the five years of this plan and will be correlated to the implementation of this plan.

### **Strategy 1**

By June 30, 2015, each county in Circuit 19 will have an increased number of agencies focused on building protective factors in parents and those working with children (i.e. teachers, childcare workers, service providers).

<b>Priority Level:</b> <b>1 and 2</b>	<b>Priority Need:</b> <i>Reduce the incidence of verified abuse involving family violence</i> <i>Reduce the incidence of verified abuse involving substance abuse</i>	
<b>A. Level of Prevention addressed by this Strategy:</b> X Primary Prevention/Universal Strategies ( <i>Complete D</i> ) X Secondary Prevention/Selected Strategies ( <i>Complete E</i> ) <b>B. Socio-Ecological Model Level(s) Influenced by this Objective:</b> X Societal Level                      X Relationship Level X Community Level                      X Individual Level		<b>C. Protective Factors that Should be Built/Supported when Meeting this Priority Need:</b> X Parental Emotional Resilience X Social Connections X Knowledge of Parenting and Child Development X Concrete Support in Times of Need X Nurturing and Attachment
<b>D. Primary Prevention Continuum Addressed by this Strategy:</b> X Community Development X Community Support for Families X Family Supportive Programs/Services X Information and Referral and Helplines X Public Awareness and Education Campaigns X Workforce		<b>E. Secondary Prevention Continuum Addressed by this Objective:</b> X Adult Education X Community Development X Community Support for Families X Concrete Services X Family Supportive Programs/Services X Public Awareness and Education Campaigns X Workforce

**Objective1.1: Utilizing a survey, identify communities/neighborhoods or service providers within the socio-economic continuum of primary/universal strategies without programs that build protective factors.**

**Objective1.2: All Circuit 19 counties will increase the number of communities/neighborhoods or service providers that build the protective factor “parental emotional resilience” into their program or curriculum.**

**Objective1.3: All Circuit 19 counties will increase the number of communities/neighborhoods or service providers that build the protective factor “nurturing and attachment” into their program or curriculum and create ways to bring this protective factor beyond their staff and clientele.**

**Objective1.4: All Circuit 19 counties will increase the number of communities/neighborhoods or service providers that assist families in making “social connections” as a result of agency programs and practices.**

**Objective1.5: 100% of Circuit 19 counties’ elementary and middle schools, and 75% of the licensed pre-schools, will increase the “knowledge of parenting and child development” in their staff, and in the parents of children in their schools.**

**Objective1.6: Conduct a survey that mirrors the survey done in year one of the plan to determine the incorporation and dissemination of protective factors by communities/neighborhoods or service providers in the counties of Circuit 19.**

<b>Objective1.1: Utilizing a survey, identify communities/neighborhoods or service providers within the socio-economic continuum of primary/universal strategies without programs that build protective factors.</b>					
<b>Action Steps</b>	<b>Measures/Benchmarks</b>	<b>Lead</b>	<b>Partners</b>	<b>Begin Date</b>	<b>End Date</b>
1.1.1: Confirm/augment survey by utilizing 211 and whole child databases, and re-survey agencies that did not provide complete information.	Number of agencies responding to the survey	Strengthening Families workgroup	211, Whole Child, surveyed agencies	7/1/2010	10/1/2010
1.1.2: Use data to pinpoint additional programs that need to be approached in order to strengthen a community wide effort to increase protective factors in families.	The number of new or relevant (i.e., substance abuse or domestic violence) agencies approached	Strengthening Families workgroup	Child abuse and child abuse related services that participate in the survey	10/1/2010	1/1/2011
1.1.3: Engage and include pinpointed agencies in the implementation of the effort to strengthen protective factors in families.	The number of pinpointed agencies who participate in the plan.	Strengthening Families workgroup	Newly engaged agencies	1/1/2011	6/30/2011

**Objective 1.2: All Circuit 19 counties will increase the number of communities/neighborhoods or service providers that build the protective factor “parental emotional resilience” into their program or curriculum.**

<b>Action Steps</b>	<b>Measures/Benchmarks</b>	<b>Lead</b>	<b>Partners</b>	<b>Begin Date</b>	<b>End Date</b>
1.2.1: Provide preschools with a “how to” guide that will encourage and outline the implementation steps for setting up a “parent resource area.”	Number of “how to” guides distributed; number of agencies integrating components of parental resilience.	Strengthening Families workgroup	Early Learning Coalition of St. Lucie County; Early Learning Coalition of Martin, Okeechobee, and Indian River Counties, Child Care Resource and Referral.	7/1/2011	6/30/2013
1.2.2: Assist food banks, free meal programs, and other pinpointed agencies (determined during the assessment phase) in establishing parental emotional resilience in their programs by providing them with a “how to” guide that will encourage and outline implementation steps.	Number of “how to” guides distributed; number of agencies integrating components of parental resilience.	Strengthening Families workgroup	Harvest Food and Outreach Center, Sarah’s Kitchen, Matthew’s Kitchen, Angel Food Ministries, other pinpointed agencies.	7/1/2011	6/30/2013

**Objective 1.3: All Circuit 19 counties will increase the number of communities/neighborhoods or service providers that build the protective factor “nurturing and attachment” into their program or curriculum and create ways to bring this protective factor beyond their staff and clientele.**

<b>Action Steps</b>	<b>Measures/Benchmarks</b>	<b>Lead</b>	<b>Partners</b>	<b>Begin Date</b>	<b>End Date</b>
1.3.1: Provide agencies that work with children 0-5 years old with a marketing/communications plan (i.e. suggested outlets, sample press releases, low/no cost information) that will help carry, to the general population, the message of the importance of early nurturing and attachment.	Number of marketing/communication plans distributed; number of Marketing/communication efforts made.	Strengthening Families workgroup	Healthy Families, Healthy Start, Health Department, Helping People Succeed, CASTLE	7/1/2011	6/30/2013
1.3.2: Encourage agencies that work with children 0-5 to “buddy” with a substance abuse, domestic violence, or other community service provider, to assist in getting information on early nurturing and attachment to the clientele of the “buddy” agency, by providing training or educational materials to the “buddy agency.”	Number of “buddy” partnerships created.	Strengthening Families workgroup	Early Learning Coalition, Healthy Families, Healthy Start, Health Department, Helping People Succeed, CASTLE	7/1/2011	6/30/2013

<b>Objective 1.4: All Circuit 19 counties will increase the number of communities/neighborhoods or service providers that assist families in making “social connections” as a result of agency programs and practices.</b>					
<b>Action Steps</b>	<b>Measures/Benchmarks</b>	<b>Lead</b>	<b>Partners</b>	<b>Begin Date</b>	<b>End Date</b>
1.4.1: Provide agencies that have existing parenting programs with a tool kit for increasing the social connections among their parents. Examples are a monthly parents’ night, e-mail sharing, or a facebook page.	The number of tool kits provided. The number of agencies that adopt a tool kit strategy.	Strengthening Families workgroup.	CASTLE, Hibiscus, Family Preservation Services, Catholic Charities, New Horizons.	7/1/2013	6/30/2015



<b>Objective1.5: 100% of Circuit 19 counties’ elementary and middle schools, and 75% of the licensed pre-schools, will increase the “knowledge of parenting and child development” in their staff, and in the parents of children in their schools.</b>					
<b>Action Steps</b>	<b>Measures/Benchmarks</b>	<b>Lead</b>	<b>Partners</b>	<b>Begin Date</b>	<b>End Date</b>
1.5.1: Using age appropriate developmental assets from the Search Institute, an e-mail alert will be sent to school nurses, social workers, guidance counselors, and principals, and to “Schools of Hope,” that highlights a developmental asset of the month, and outlines ways to promote that asset in the school.	The number of schools that agree to receive a developmental asset of the month. The number of licensed pre-schools that agree to receive a developmental asset of the month. The number of schools that promote an asset of the month.	Strengthening Families workgroup.	Early Learning Coalition of St. Lucie County, Early Learning Coalition of Martin, Indian River and Okeechobee Counties, Children’s Services Council of St. Lucie County, Children’s Services Council of Martin County, the School Boards in each county.	7/1/2013	6/30/2015

<b>Objective1.6: Conduct a survey that mirrors the survey done in year one of the plan to determine the incorporation and dissemination of protective factors by communities/neighborhoods or service providers in the counties of Circuit 19.</b>					
<b>Action Steps</b>	<b>Measures/Benchmarks</b>	<b>Lead</b>	<b>Partners</b>	<b>Begin Date</b>	<b>End Date</b>
1.6.1: Utilize 211 and Whole Child information to survey area service providers.	The number of agencies participating in the survey.	Strengthening Families workgroup.	Service providers, communities, and neighborhoods in Circuit 19.	7/1/2014	1/31/2015

<b>Objective 1.6: Conduct a survey that mirrors the survey done in year one of the plan to determine the incorporation and dissemination of protective factors by communities/neighborhoods or service providers in the counties of Circuit 19.</b>					
<b>Action Steps</b>	<b>Measures/Benchmarks</b>	<b>Lead</b>	<b>Partners</b>	<b>Begin Date</b>	<b>End Date</b>
1.6.2: Compare data from the original survey to the data from the survey done in year five of the plan.	The percent of service providers, communities, and neighborhoods in Circuit 19 that incorporate protective factors into their work with families.	Strengthening Families workgroup.	Service providers, communities, and neighborhoods in Circuit 19.	1/31/2015	6/30/2015

### **Strategy 2**

By June 30, 2015, Circuit 19 will have replicated available Whole Child Communities from one county to four counties

<b>Priority Level: 1 and 3</b>	<b>Priority Need:</b>	
<b>A. Level of Prevention addressed by this Strategy:</b> <input checked="" type="checkbox"/> Primary Prevention/Universal Strategies ( <i>Complete D</i> ) <input checked="" type="checkbox"/> Secondary Prevention/Selected Strategies ( <i>Complete E</i> ) <b>B. Socio-Ecological Model Level(s) Influenced by this Objective:</b> <input checked="" type="checkbox"/> Societal Level <input checked="" type="checkbox"/> Relationship Level <input checked="" type="checkbox"/> Community Level <input checked="" type="checkbox"/> Individual Level		<b>C. Protective Factors that Should be Built/Supported when Meeting this Priority Need:</b> <input checked="" type="checkbox"/> Parental Emotional Resilience <input checked="" type="checkbox"/> Social Connections <input checked="" type="checkbox"/> Knowledge of Parenting and Child Development <input checked="" type="checkbox"/> Concrete Support in Times of Need <input checked="" type="checkbox"/> Nurturing and Attachment
<b>D. Primary Prevention Continuum Addressed by this Strategy:</b> <input checked="" type="checkbox"/> Community Development <input checked="" type="checkbox"/> Community Support for Families <input checked="" type="checkbox"/> Family Supportive Programs/Services <input checked="" type="checkbox"/> Information and Referral and Helplines <input checked="" type="checkbox"/> Public Awareness and Education Campaigns <input checked="" type="checkbox"/> Workforce		<b>E. Secondary Prevention Continuum Addressed by this Objective:</b> <input checked="" type="checkbox"/> Adult Education <input checked="" type="checkbox"/> Community Development <input checked="" type="checkbox"/> Community Support for Families <input checked="" type="checkbox"/> Concrete Services <input checked="" type="checkbox"/> Family Supportive Programs/Services <input checked="" type="checkbox"/> Public Awareness and Education Campaigns <input checked="" type="checkbox"/> Workforce

### **Objectives**

**Objective 2.1 Establish Community Leadership support for expansion of Whole Child Communities in Okeechobee, Indian River and St Lucie County**

**Objective 2.2 Engage Community in the development of community needs assessment**

- Objective 2.3 Develop County level community plans based on needs assessments
- Objective 2.4 Create County Specific Action teams
- Objective 2.5 Create a 'No Wrong Door Culture' through Technology
- Objective 2.6 Launch Active Whole Child Websites

<b>Objective: 2.1 Establish community leadership support for expansion of Whole Child Communities in Okeechobee, Indian River and St Lucie County</b>					
<b>Action Steps</b>	<b>Measures/Benchmarks</b>	<b>Lead</b>	<b>Partners</b>	<b>Begin Date</b>	<b>End Date</b>
2.1.1 Prioritize counties for expansion	A prioritized list of counties will be developed, based upon letters of support by the county leadership	Whole Child Connection (WCC)	Alliance of Okeechobee and The Treasure Coast	June 1, 2010	June 30, 2010
2.1.2 Establish and identify a Steering Committee /Fiscal Agent to take the lead towards implementation	Community Champions and/or Leaders who commit to instill WC philosophy across various sectors of the community are identified.	WCC –Martin County	<u>St. Lucie</u> Executive Roundtable of St. Lucie County, Inc  <u>Indian River</u> Junior League  <u>Okeechobee</u> Shared Services Network	July 1, 2010	September 1, 2010
2.1.3 Determine Funding	Identify sources of funding: CSC's, United Way, local govt, and/or grants.	WCC-Martin County	<u>St. Lucie</u> Executive Roundtable of St. Lucie County, Inc  <u>Indian River</u> Junior League  <u>Okeechobee</u> Shared Services Network	September 1, 2010	September 30, 2010

<b>Objective: 2.1 Establish community leadership support for expansion of Whole Child Communities in Okeechobee, Indian River and St Lucie County</b>					
<b>Action Steps</b>	<b>Measures/Benchmarks</b>	<b>Lead</b>	<b>Partners</b>	<b>Begin Date</b>	<b>End Date</b>
2.1.4 Determine Staffing	A core staff will be determined for each implementing County.	WCC-Martin County	<u>St. Lucie</u> Executive Roundtable of St. Lucie County, Inc  <u>Indian River</u> Junior League  <u>Okeechobee</u> Shared Services Network	October 1, 2010	October 31, 2010
2.1.5 WC Community signs Lawton Chiles Foundation MOU	WC Steering Committee Members sign MOU.	WCC-Martin County	<u>St. Lucie</u> Executive Roundtable of St. Lucie County, Inc  <u>Indian River</u> Junior League  <u>Okeechobee</u> Shared Services Network	November 1, 2010	November 15, 2010

<b>Objective: 2.2 Engage community in the development of community needs assessment</b>					
<b>Action Steps</b>	<b>Measures/Benchmarks</b>	<b>Lead</b>	<b>Partners</b>	<b>Begin Date</b>	<b>End Date</b>
2.2.1 The appropriate Stakeholders will sign the 'Commitment to Children statement	Signed stakeholder commitments	WCC-Martin County	<u>St. Lucie</u> Executive Roundtable of St. Lucie County, Inc.  <u>Indian River</u> Junior League  <u>Okeechobee</u> Shared Services Network	December 1, 2010	December 31, 2010
2.2.2 Conduct listening projects to engage all segments of the community to help identify critical issues that affect child well-being.	Completed listening projects	WCC-Martin County	<u>St. Lucie</u> Executive Roundtable of St. Lucie County, Inc.  <u>Indian River</u> Junior League  <u>Okeechobee</u> Shared Services Network	December 1, 2010	January 31, 2011

<b>Objective: 2.3 Develop county level community plans based on needs assessments</b>					
<b>Action Steps</b>	<b>Measures/Benchmarks</b>	<b>Lead</b>	<b>Partners</b>	<b>Begin Date</b>	<b>End Date</b>
2.3.1 Develop a Mission Statement for each WC Community.	Completed mission statement	WCC-Martin County	<u>St. Lucie</u> Executive Roundtable of St. Lucie County, Inc  <u>Indian River</u> Junior League  <u>Okeechobee</u> Shared Services Network	January 1, 2011	April 30, 2011
2.3.2 Conduct and/or adopt a Community Assessment per County.	Completed Community assessment	WCC-Martin County	<u>St. Lucie</u> Executive Roundtable of St. Lucie County, Inc  <u>Indian River</u> Junior League  <u>Okeechobee</u> Shared Services Network	January 1, 2011	April 30, 2011
2.3.3 Identify Critical Issues & Root Causes as presented by each County Community Assessment.	Critical issues and root causes presented to community stakeholders	WCC-Martin County	<u>St. Lucie</u> Executive Roundtable of St. Lucie County, Inc  <u>Indian River</u> Junior League  <u>Okeechobee</u> Shared Services Network	January 1, 2011	April 30, 2011

<b>Objective: 2.4 Create county specific action teams</b>					
<b>Action Steps</b>	<b>Measures/Benchmarks</b>	<b>Lead</b>	<b>Partners</b>	<b>Begin Date</b>	<b>End Date</b>
2.4.1 Identify Action Teams centered around the identified interventions to improve child well-being	Action teams established	WCC-Martin County	<u>St. Lucie</u> Executive Roundtable of St. Lucie County, Inc  <u>Indian River</u> Junior League  <u>Okeechobee</u> Shared Services Network	May 1, 2011	May 31, 2011
2.4.2 Establish a format to share 'lessons learned' to other WC Communities Statewide.	Information sharing begins	WCC-Martin County	<u>St. Lucie</u> Executive Roundtable of St. Lucie County, Inc  <u>Indian River</u> Junior League  <u>Okeechobee</u> Shared Services Network	June 1, 2011	June 15, 2011

<b>Objective: 2.5 Create a ‘No Wrong Door Culture’ through Technology</b>					
<b>Action Steps</b>	<b>Measures/Benchmarks</b>	<b>Lead</b>	<b>Partners</b>	<b>Begin Date</b>	<b>End Date</b>
2.5.1 Contract with ETS (IT Vendor) to develop the web-based technology that accomplishes this objective.	County specific contracts executed	WCC-Martin County	ETS, Inc.  <u>St. Lucie</u> Executive Roundtable of St. Lucie County, Inc  <u>Indian River</u> Junior League  <u>Okeechobee</u> Shared Services Network	July 1, 2011	July 31, 2011
2.5.2 Create the WC Profile (Core Questions) centered on the 6 dimensions of well being for each County.	Profile complete in each county	WCC –Martin County	ETS, Inc.  <u>St. Lucie</u> Executive Roundtable of St. Lucie County, Inc  <u>Indian River</u> Junior League  <u>Okeechobee</u> Shared Services Network	August 1, 2011	December 30, 2011
2.5.3 Begin the implementation process before deployment of the Whole Child Connection.		WCC-Martin County	ETS, Inc.  <u>St. Lucie</u> Executive Roundtable of St. Lucie County, Inc  <u>Indian River</u> Junior League  <u>Okeechobee</u> Shared Services Network	October 1, 2011	December 30, 2011



2.5.4 Populate WCC Databases with county-specific resources	Data base populated	WCC-Martin County	ETS, Inc.  <u>St. Lucie</u> Executive Roundtable of St. Lucie County, Inc <u>Indian River</u> Junior League  <u>Okeechobee</u> Shared Services Network	December 1, 2010	December 30, 2011
---	---------------------	-------------------	--	------------------	-------------------

<b>Objective: 2.6 Launch Active Whole Child Websites</b>					
<b>Action Steps</b>	<b>Measures/Benchmarks</b>	<b>Lead</b>	<b>Partners</b>	<b>Begin Date</b>	<b>End Date</b>
2.6.1 Deploy WCC Training websites in each expansion county	Launch beta test of WCC System in each expansion county	WCC-Martin County	ETS, Inc.  <u>St. Lucie</u> Executive Roundtable of St. Lucie County, Inc  <u>Indian River</u> Junior League  <u>Okeechobee</u> Shared Services Network	January 1, 2012	February 1, 2012
2.6.2 Deploy WCC System websites in each expansion county	Launch the live sites for each expansion county.	WCC-Martin County	ETS, Inc.  <u>St. Lucie</u> Executive Roundtable of St. Lucie County, Inc  <u>Indian River</u> Junior League	March 1, 2012	March 31, 2012

			Okeechobee Shared Services Network		
--	--	--	--	--	--

### Strategy 3

By June 30, 2015, the community will have increased Circuit-wide coverage for community awareness campaigns related to child abuse prevention.

<b>Priority Level:</b> <b>3</b>	<b>Priority Need:</b> Heighten the general public's awareness of and support for the resources needed and efforts ongoing to prevent child abuse in the community.				
<b>A. Level of Prevention addressed by this Strategy:</b> x Primary Prevention/Universal Strategies ( <i>Complete D</i> ) Secondary Prevention/Selected Strategies ( <i>Complete E</i> ) <b>B. Socio-Ecological Model Level(s) Influenced by this Objective:</b> <input type="checkbox"/> Societal Level                      x Relationship Level x Community Level                    x Individual Level			<b>C. Protective Factors that Should be Built/Supported when Meeting this Priority Need:</b> X Parental Emotional Resilience X Social Connections X Knowledge of Parenting and Child Development X Concrete Support in Times of Need X Nurturing and Attachment		
<b>D. Primary Prevention Continuum Addressed by this Strategy:</b> <input type="checkbox"/> Community Development X Community Support for Families Family Supportive Programs/Services <input type="checkbox"/> Information and Referral and Helplines X Public Awareness and Education Campaigns <input type="checkbox"/> Workforce X Family Supportive Programs/Services X Information and Referral and Helplines X Public Awareness and Education Campaigns X Workforce			<b>E. Secondary Prevention Continuum Addressed by this Objective:</b> <input type="checkbox"/> Adult Education <input type="checkbox"/> Community Development Community Support for Families <input type="checkbox"/> Concrete Services Family Supportive Programs/Services Public Awareness and Education Campaigns <input type="checkbox"/> Workforce		

### Objectives

**Objective: 3.1 Identify current child abuse prevention awareness efforts and gaps in the Circuit (in particular as related to Child Abuse Prevention Month)**

**Objective 3.2 Expand message to under-served areas of each county.**

<b>Objective: 3.1 Identify current child abuse prevention awareness efforts and gaps in the Circuit (in particular as related to Child Abuse Prevention Month).</b>					
<b>Action Steps</b>	<b>Measures/Benchmarks</b>	<b>Lead</b>	<b>Partners</b>	<b>Begin Date</b>	<b>End Date</b>
3.1.1 Identify agencies who currently participate in child abuse prevention activities, and survey regarding types of activities and message.	List (or map) of current efforts.	CAPP Strengthening Families Workgroup	United for Families, DCF, Healthy Families, Healthy Start, Health Department, Helping People Succeed, CASTLE, and others as identified.	7/1/2010	9/30/2010
3.1.2 From results of survey, determine gaps in these efforts.	Geographical and cultural gaps in awareness coverage are identified  e.g. There is no coverage of child abuse prevention month in the Spanish speaking media.	CAPP Strengthening Families workgroup	United for Families, DCF, Healthy Families, Healthy Start, Health Department, Helping People Succeed, CASTLE, and others as identified.	9/30/2010	3/15/2011
3.1.3 Develop plan building on protective factors and reframing research to expand current efforts or add additional efforts to fill these gaps.	Plan with needed coverage areas identified.	CAPP Strengthening Families workgroup	United for Families, DCF, Healthy Families, Healthy Start, Health Department, Helping People Succeed, CASTLE, and others as identified.	3/15/2011	9/30/2011

<b>Objective: 3.2 Expand child abuse prevention outreach to under-served areas of each county.</b>					
<b>Action Steps</b>	<b>Measures/Benchmarks</b>	<b>Lead</b>	<b>Partners</b>	<b>Begin Date</b>	<b>End Date</b>
3.2.1 Identify agencies willing to expand and or deepen their efforts.	All identified gaps are matched with an agency agreeing to support.	CAPP Strengthening Families workgroup.	United for Families, DCF, Healthy Families, Healthy Start, Health Department, Helping People Succeed, CASTLE, and others as identified.	9/30/2011	6/30/2012
3.2.2 Implement expansion of coverage to coincide with child abuse prevention month.	Completion of the implementation steps for each agency, as scheduled.	CAPP Strengthening Families workgroup	United for Families, DCF, Healthy Families, Healthy Start, Health Department, Helping People Succeed, CASTLE, and others as identified.	7/1/2012	4/1/2013

#### **Strategy 4**

Circuit 19 will support the statewide efforts to increase the availability and capacity of Healthy Families Florida to provide home visitation for families at high risk of abuse and neglect and in need of parenting education and support over the five-year period from July 2010 – June 2015.

<b>Priority Level: 3</b>	<b>Priority Need: <i>Reduce the incidence of verified abuse cases involving children under age five</i></b>	
<b>A. Level of Prevention addressed by this Strategy:</b> <input type="checkbox"/> Primary Prevention/Universal Strategies ( <i>Complete D</i> ) <input checked="" type="checkbox"/> Secondary Prevention/Selected Strategies ( <i>Complete E</i> ) <b>B. Socio-Ecological Model Level(s) Influenced by this Objective:</b> <input type="checkbox"/> Societal Level <input checked="" type="checkbox"/> Relationship Level <input checked="" type="checkbox"/> Community Level <input checked="" type="checkbox"/> Individual Level		<b>C. Protective Factors that Should be Built/Supported when Meeting this Priority Need:</b> <input checked="" type="checkbox"/> Parental Emotional Resilience <input checked="" type="checkbox"/> Social Connections <input checked="" type="checkbox"/> Knowledge of Parenting and Child Development <input checked="" type="checkbox"/> Concrete Support in Times of Need <input checked="" type="checkbox"/> Nurturing and Attachment
<b>D. Primary Prevention Continuum Addressed by this Strategy:</b> <input type="checkbox"/> Community Development <input type="checkbox"/> Community Support for Families		<b>E. Secondary Prevention Continuum Addressed by this Objective:</b> <input type="checkbox"/> Adult Education <input checked="" type="checkbox"/> Community Development <input checked="" type="checkbox"/> Community Support for Families

<input type="checkbox"/> Family Supportive Programs/Services <input type="checkbox"/> Information and Referral and Helplines <input type="checkbox"/> Public Awareness and Education Campaigns <input type="checkbox"/> Workforce	<input checked="" type="checkbox"/> Concrete Services <input checked="" type="checkbox"/> Family Supportive Programs/Services <input type="checkbox"/> Public Awareness and Education Campaigns <input type="checkbox"/> Workforce
--	---

<b>Objective: 1.1 Continue, enhance and expand Healthy Families Florida.</b>					
<b>Action Steps</b>	<b>Measures/Benchmarks</b>	<b>Lead</b>	<b>Partners</b>	<b>Begin Date</b>	<b>End Date</b>
Implement advocacy strategies to align with Healthy Families Florida's legislative priorities.	100% of advocacy strategies will align with legislative priorities and messages set forth by Healthy Families Florida.	Healthy Families Martin-Okeechobee, St. Lucie, Indian River	Healthy Families Florida, Children's Services Councils in the Circuit, Healthy Start Coalitions in the Circuit, Martin County Interagency Coalition, Treasure Coast Advocacy Coalition	July 1, 2010	June 30, 2015
Develop and enhance partnerships to support program efforts.	Number of new or enhanced Memoranda of Agreement (MOAs).	Healthy Families Martin-Okeechobee, St. Lucie, Indian River	Local partners (e.g., Early Learning Providers, Pediatricians, Other Home Visiting programs)	July 1, 2010	On-going
Educate community partners about Healthy Families services and its benefits.	Number of meetings, presentations, community events and public awareness efforts, etc. conducted to increase the awareness and purpose of the program.	Healthy Families Martin-Okeechobee, St. Lucie, Indian River	Healthy Start Coalitions in the Circuit, Health Departments in the Circuit, School Boards in the Circuit, Children's Services Councils in the Circuit, Early Steps, BRAIN Program, Helping People Succeed Baby	July 1, 2010	On-going

<b>Objective: 1.1 Continue, enhance and expand Healthy Families Florida.</b>					
<b>Action Steps</b>	<b>Measures/Benchmarks</b>	<b>Lead</b>	<b>Partners</b>	<b>Begin Date</b>	<b>End Date</b>
			Steps Program, Martin Memorial Medical Center, Lawnwood Hospital, other local hospitals.		
Facilitate multi-disciplinary staffing for families with an open child protection investigation or case.	<ul style="list-style-type: none"> <li>• All referrals from CPI and CBC agencies to Healthy Families with an open investigation; and</li> <li>• All HF participants with an open investigation or case will have a multi-disciplinary staffing.</li> </ul>	CPI CBC Healthy Families Martin-Okeechobee, St. Lucie, Indian River	Other community partners serving the family.	July 1, 2010	On-going
Work with Healthy Families Florida to determine unmet need for Healthy Families services in the community.	Report of unmet need will be submitted to Healthy Families Florida, based on criteria developed through partnership with Healthy Families Florida.	Healthy Families Florida	Healthy Families Florida, Healthy Families Martin-Okeechobee, St. Lucie, Indian River, Healthy Start Coalitions in the Circuit, Health Departments in the Circuit, Martin Memorial Medical Center, Lawnwood Hospital, other local hospitals, DCF, Vital Statistics.	July 1, 2010	December 31, 2010
Obtain letters of support from community partners when grant opportunities arise.	100% of grant applications will include letters of support from community partners.	Healthy Families Martin-Okeechobee, St. Lucie, Indian River	As appropriate, Children's Services Councils in the Circuit, United Ways in the Circuit, local CAPP team members, Healthy	July 1, 2010	On-going

<b>Objective: 1.1 Continue, enhance and expand Healthy Families Florida.</b>					
<b>Action Steps</b>	<b>Measures/Benchmarks</b>	<b>Lead</b>	<b>Partners</b>	<b>Begin Date</b>	<b>End Date</b>
			Start Coalitions in the Circuit, Early Learning Coalitions in the Circuit, other existing community partners that have MOAs with Healthy Families.		

## **VII. MONITORING AND EVALUATION**

*Plans for monitoring progress and for determining the results of the prevention efforts. Describe how the Circuit planning team will monitor the ongoing progress of the implementation of the plan. It is important that all of the planning and implementing partners be actively involved on a regular basis to discuss their efforts and determine how, collectively, they are taking action as a continuous process. This will provide opportunities to determine and celebrate the producing of measureable improvement in the well-being of the Circuit's communities and in the performance of the programs contributing to these results.*

### **VII.A. MONITORING PLAN IMPLEMENTATION**

During our planning process, we established four subcommittees, each charged with completion of five year plan strategies, objectives, and action steps. Three of these committees, the Whole Child Expansion Committee, Strengthening Families Committee, and Adoption Promotion and Support Committee are structured to remain intact and complete implementation of action steps, progress analysis and reporting throughout the five year plan period. This charge includes ongoing identification and recruitment of community members whose involvement will further the efforts of the team in plan implementation.

Subcommittees will meet to review progress on action steps every other month, or more frequently as deemed necessary by the committee. Partners tasked with implementation efforts will complete their sections of the monitoring report template and review at the subcommittee level on a bimonthly basis. The bimonthly review will be structured to identify:

- Action steps which are completed and/or pending implementation and any barriers encountered
- Evidence of progress toward strategy achievement through review of established measures/benchmarks
- Identification of additional critical partners
- Identification of revisions needed to action plan

Every six months, a full team meeting consisting of all subcommittee members will be convened. Interested parties and stakeholder representatives identified by the subcommittees as critical to the process will be invited to participate (if not already engaged by the appropriate subcommittee). The bi-annual full team meeting will be structured to provide and/or elicit information on:

- Overview of indicator baselines and progress toward goals
- Committee level progress reports including major accomplishments and protective factors accomplishments
- Sharing of information regarding program performance
- Review of local success stories and new information on causes
- Refinement/ratification of committee-recommended action plan changes
- Identification of lessons learned, additional supports needed

The Steering Committee will meet as necessary to evaluate the monitoring structure and ensure that both the full team meetings and subcommittee meetings are successfully moving the plan forward, while capturing all essential information to support our reporting process. The Alliance will be kept informed through detailed reports at their bi-monthly meetings.



## **VII. B ANNUAL PROGRESS REPORTING**

*Describe how the Circuit planning team will prepare for reporting the annual progress of the efforts to implement the plan. See number two above for one idea about this effort (hint). See Attachment 9 of this outline for the timeframe for this reporting.*

As described in VII.A. above, our bimonthly subcommittee meetings are structured to gather relevant information for our quarterly monitoring updates. The design of the meetings will also focus team members' attention on information needed to conduct the analysis required for informed decision making at the full team level. The full team meetings are structured to analyze and determine strategic direction, while capturing information required for the Annual progress report. The subcommittee and full team meetings will be scheduled to support the team's success with accurate and timely completion of annual progress reporting.

## **VIII. BARRIERS**

*A description of barriers to the accomplishment of a comprehensive approach to the prevention of child abuse, abandonment, and neglect. §39.001(8) (b) 6.i*

- Lack of clear understanding of primary prevention as strategies targeted to the community at large, and not solely to families with risk factors.
- Ongoing and increasingly severe revenue shortfalls at both the state and local level continue to have a negative impact on primary and secondary prevention programs, at a time when service needs are increasing.

## **IX. RECOMMENDATIONS**

*Recommendations for changes that can be accomplished only at the state program level or by legislative action. §39.001(8) (b) 6.j*

These recommendations are drawn from the 2009 Treasure Coast Legislative Summit, an annual event organized by the Treasure Coast Advocacy Coalition (TCAC). The Summit is the forum by which a cooperative body of stakeholders presents priority legislative issues to the local legislative delegation on issues of critical importance to our community. The issues presented this past year under the Strengthening Families category that are linked to child abuse prevention include:

- Increased funding for Healthy Families to meet the additional demand for these critical services
- Increase Medicaid reimbursement for reproductive health services in order to reduce unplanned births and promote healthy birth outcomes

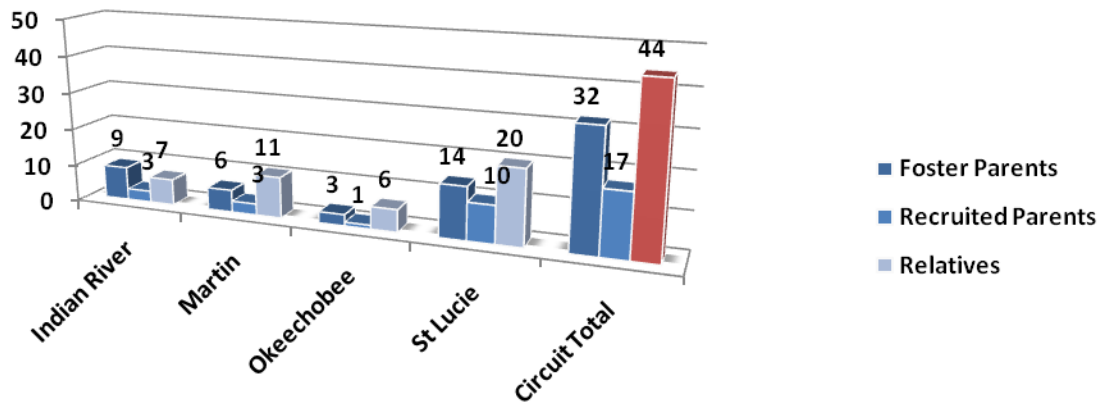
## **PART 3 – PLAN FOR THE PROMOTION OF ADOPTION**

### **I. STATUS OF ADOPTION PROMOTION**

*Status of adoption (including information concerning the number of children within the child welfare system available for adoption who need child-specific adoption promotion efforts) §39.001(8) (b) 6.c*

Our circuit has consistently met or exceeded our annual targets for the number of adoptions completed. With a total of 93 adoptions finalized for Fiscal Year 2008-2009, we exceeded our target of 77. With 108 adoptions completed for the current fiscal year, we have already exceeded our target of 88.

**Children Adopted by Relatives, Foster Parents and Recruited Parents in SFY 2008-2009**



A review of the most likely group to adopt our foster children reveals that:

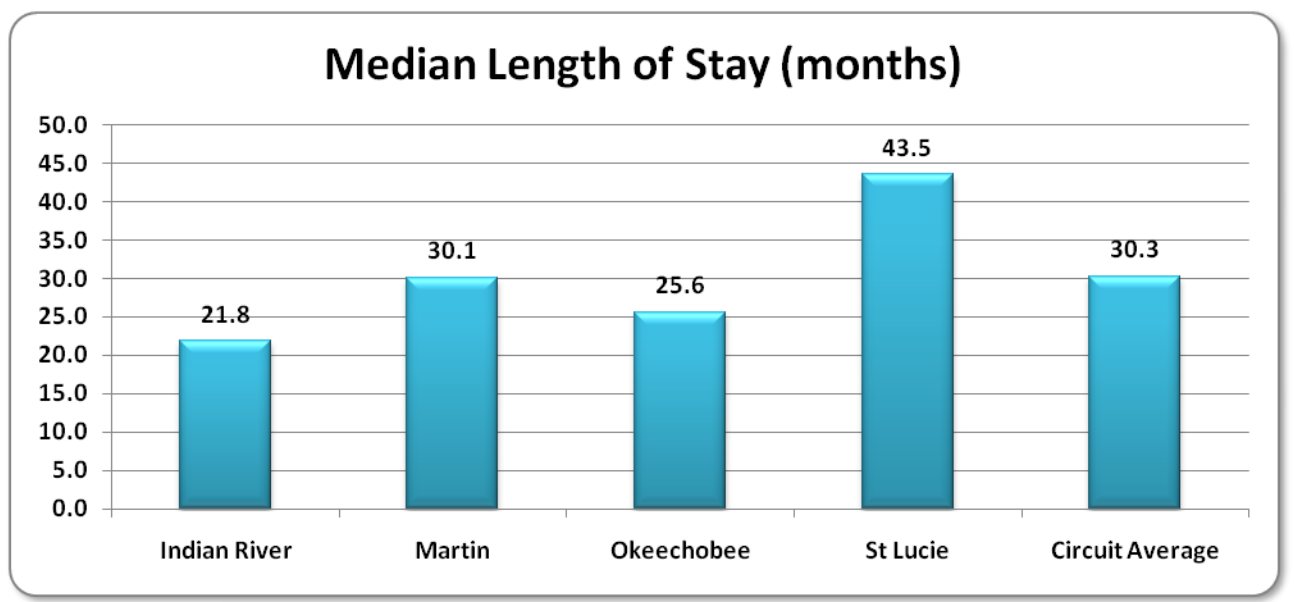
- Circuit 19 completed 47% of our FY 2008/2009 adoptions with relatives, compared to 20% statewide.
- 34% of our adoptions were completed with foster parents, compared with 58% statewide.
- 18% of adoptions were finalized with parents who were recruited from the general population, compared with 22% statewide.
- Foster parent adoptions exceeded relative adoptions in Indian River County alone.

These statistics demonstrate one of the strengths of our circuit of maintaining relative connections through adoption for children in our care. We believe this also contributes to lengths of stay of less than one year for a majority of our children following termination of parental rights, as shown below.

**The length of time between becoming legally free for adoption and adoption finalization for children adopted during SFY 2008-2009**

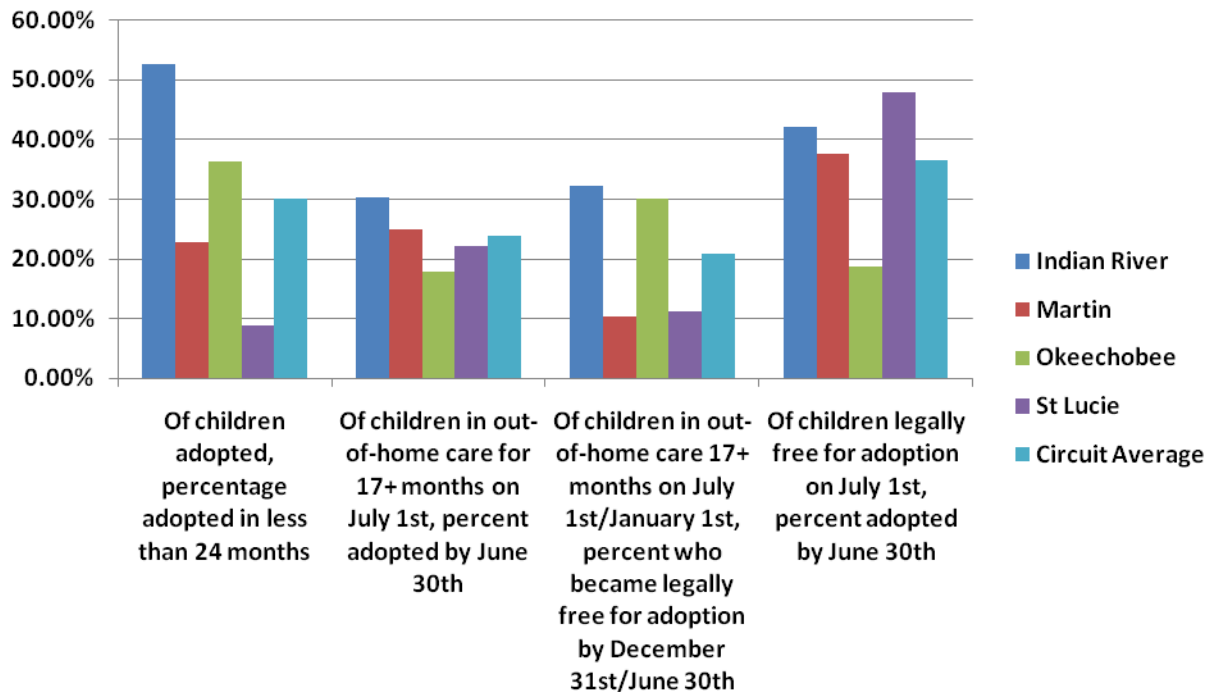
County	< 12 months	12 to months to < 24 months	24 months to < 36 months	36 months to < 48 months	48 months or more
Indian River	15	2	2		
Martin	10	7	1	1	1
Okeechobee	8	2			
Saint Lucie	29	11	4		
Circuit 19	62	22	7	1	1

Of the children adopted in FY 0809, 66% had parental rights terminated for less than one year. Less than 2% of our circuit's children who were adopted in FY 2008-2009 waited longer than three years for a forever family. The longest lengths of stay were for children from Martin County, which also had the lowest percentage of children adopted within 12 months.



At 30.3 months, children adopted in Circuit 19 experienced a longer median length of stay than the statewide median of 26.8. Three of our four counties were below the state median, with St. Lucie County exceeding the median by more than 13 months. St. Lucie county's performance of 47% of children achieving adoption within 12 months of TPR, compared with the higher than average length of stay for children including their time in care prior to TPR, compels us to look closely at our performance in timely achieving either reunification or Termination of Parental rights for children in out of home care.

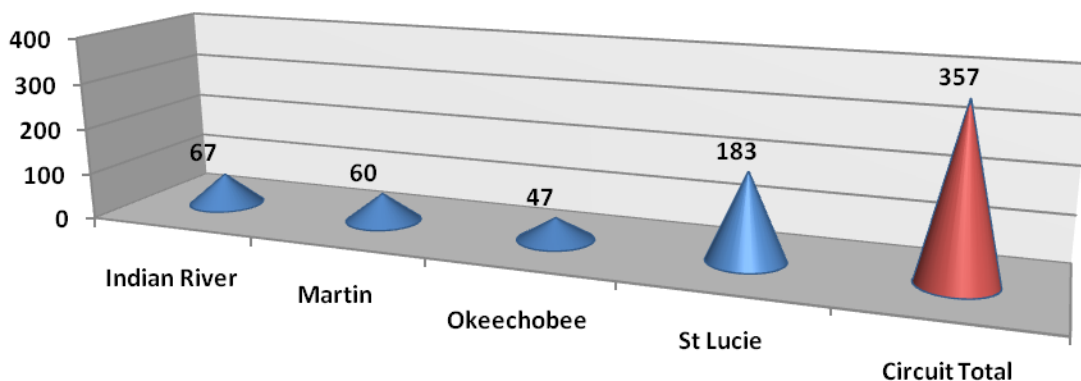
## Federal Performance Measures Related to Adoption for FY 08/09



A review of adoption performance data for the 2008-2009 fiscal year reveals that:

- At 30%, we are performing below the state average of 41% in finalizing adoptions within 24 months of removal. St. Lucie County performed the lowest in our circuit at 9% and Indian River the highest at 53%.
- At 21%, Circuit 19 performs above the state average of 14% in achieving permanency for children who have been in out of home care greater than 17 months. St. Lucie and Martin counties performed below the circuit and state averages.
- 37% of our children who were legally free for adoption on July 1, 2008, were adopted by June 30<sup>th</sup>, 2009, compared with a state average of 47%.

## Children in Out of Home Care Greater than 12 months on June 30, 2009



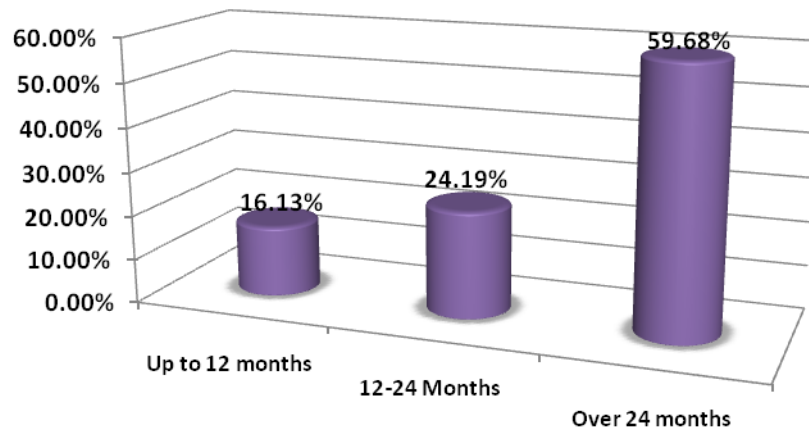
As a result of our performance below the state average on these measures, our team also studied other data indicators to gain insight into the case planning and termination of parental rights process leading to a child's availability for adoption.

We found that:

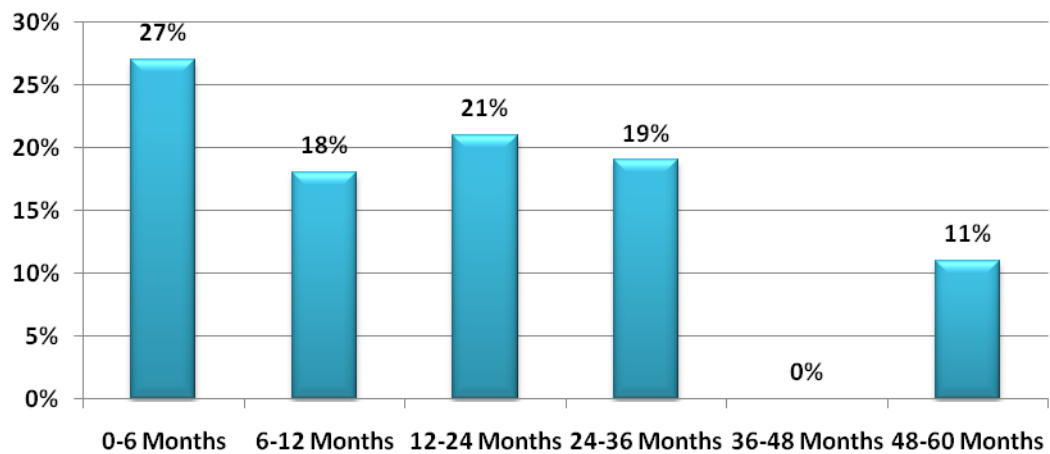
- 52% of our total 682 children in out of home care as of June 30, 2009, had been in care greater than 12 months.
- 79 of our 682 children in out of home care (11.5%) have experienced termination of parental rights as to both parents
- Of these children with lengths of stay greater than one year, 22% had experienced termination of parental rights as to both birth parents.

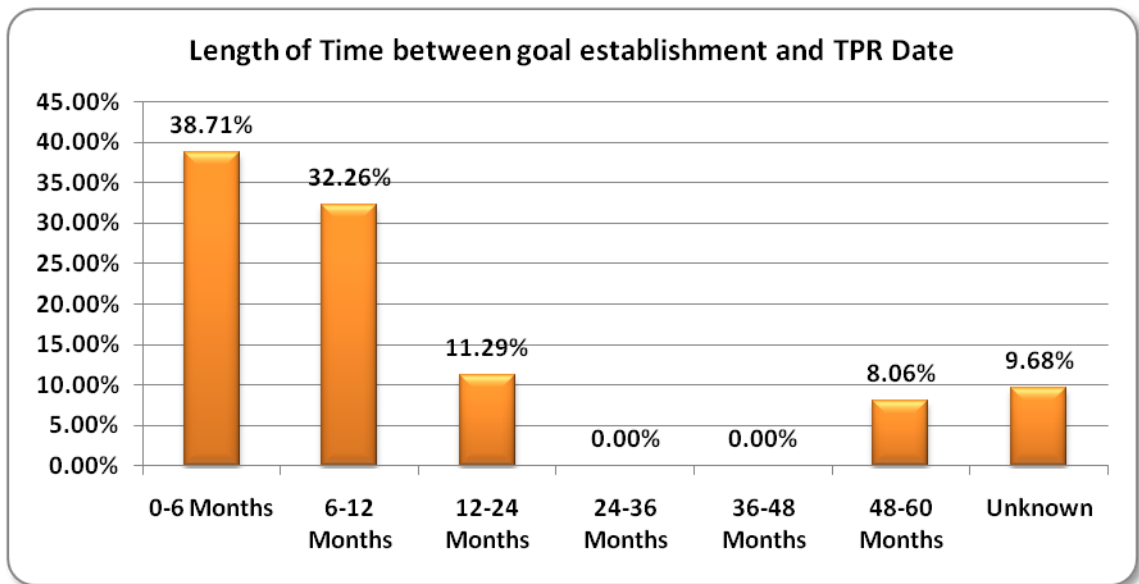
Although the length of time between TPR goal establishment and TPR date was less than twelve months for 70% of children, the time elapsed from the final removal of the child from their home to completion of parental rights termination was more than two years for 60% of the children currently available for adoption. An additional 25% waited 12-24 months.

### Length of Time from Removal Date to TPR



### Length of Time between Removal and Goal Establishment



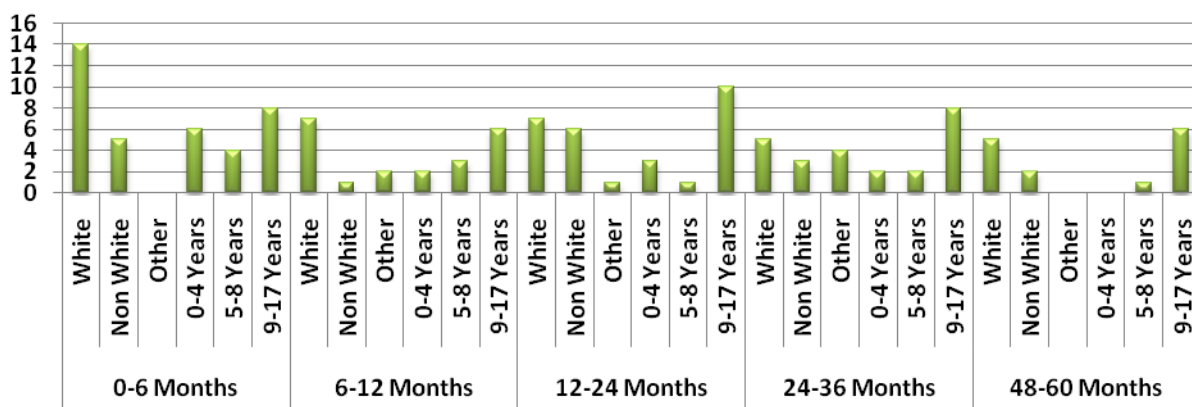


As a result of this information, we believe identification of the root cause and determination of actions that will reduce or eliminate delays to permanency is warranted.

### **Children available for adoption**

As of June 30, 2009, Circuit 19 had 79 children who were in TPR status, 62 of which had a goal of adoption. Included in this number is 18 sibling groups totaling 41 children, 29 of the 62 available children were in an identified home wanting to adopt (i.e. foster, relative or non-relative who has applied to adopt). The remaining 33 children, including five sibling groups, constitute the number of children in out of home care who need child-specific adoption promotion efforts as of June 30, 2009. All but four of the waiting children are over the age of 12. Each of the recruitment kids are actively involved in child-specific adoption promotion or targeted recruitment, including promotion through our local Heart Gallery.

## Time (in months) Children have been Waiting to be Adopted by Age and Race as of 6/30/2009



### Based on the above data set:

- 53% of our children have been waiting more than 12 months.
- 61% of our children waiting are white, and 44% of children waiting more than 12 months are white.
- 61% of our children waiting are ages 9-17, and 63% of children ages 9-17 have been waiting more than 12 months.

### Of children legally free for adoption on June 30, 2009, the length of time since becoming legally free for adoption

<u>County</u>	<u>&lt; 12 months</u>	<u>12 months to &lt; 24 months</u>	<u>24 months to &lt; 36 months</u>	<u>36 months or more</u>	<u>TOTAL</u>
Indian River	4	9	5	9	27
Martin	0	5	0	2	7
Okeechobee	0	0	2	7	9
Saint Lucie	1	5	3	27	36
Circuit 19	5	19	10	45	79

- 79 of our 682 children in out of home care (11.5%) have experienced termination of parental rights as to both parents.
- 70% of those legally free for adoption have been waiting more than two years
- 55 of our 682 children in out of home care (8%) have a goal of another planned and permanent living arrangement (APPLA). The county level occurrence of APPLA is consistent with the percentage of the out of home care population for each county.

Based on the data sets provided for analysis, our strengths seem to be expedient adoptions with relatives and foster parents. Delays to completing either reunification or completion of parental



rights termination, and identifying families who can meet the needs of our older children who have been in care for significant periods of time appear to be areas on which we may benefit from a focus during this plan period.

In our system of care, children are transferred to the adoption unit for primary case management and recruitment efforts following the court order terminating parental rights. Because the challenges relating to permanency occur prior to the involvement of the Adoptions unit, the team determined that action plans relating to this timely permanency would be most effective if addressed at the circuit level.

Recruitment is currently addressed through one adoptions unit responsible for all children available for adoption within the four-county circuit. Research made available by Five Points Technology groups on targeted recruitment supports an approach focused on the specific needs of the child matched with community demographic mapping to better identify families most likely to adopt a particular child based upon the child's specific characteristics. We believe that our limited resources are better focused upon applying the research to our targeted recruitment efforts, rather than completing county specific recruitment planning activities.

## **II. CONTINUUM OF ADOPTION PROMOTION PROGRAMS**

*A continuum of programs necessary for a comprehensive approach to promotion of adoption (including brief descriptions of such programs and services) §39.001(8) (b) 6.f*

**Adoption awareness efforts** – Web-based, television, newspaper, magazine and radio public service announcements that provide a backdrop for general community awareness about the children in foster care who need adoptive families. The *Explore Adoption* campaign is pre-packaged and ready to be customized and used.

**Targeted recruitment efforts** – Focusing on specific groups of children and teens needing homes and identifying and targeting those communities most likely to adopt these children. Descriptions of common special needs of available children will lead to target populations that should be recruited; community and faith-based initiatives; incentive programs for foster and adoptive families to recruit others from their communities; advertisements, posters or flyers at places where foster and adoptive parents typically shop or visit; Web sites such as *Explore Adoption*; etc. The *Explore Adoption* campaign is pre-packaged and ready to be used.

**Child-specific recruitment efforts** – Locating and matching an identified waiting child with an approved adoptive family; media or materials describing and recruiting parents for an individual child; statewide and national adoption Web sites (e.g., *Explore Adoption*, Adoption Information Center, etc.); statewide and local heart galleries; radio, newspaper or television features; “passports” or brochures featuring the child’s strengths and needs; etc.

**Orientation for prospective adoptive parents** – Meetings for staff to explain the adoption process and requirements for becoming an adoptive family; follow-up literature and guides; etc.

**Assistance (navigating the system) for prospective adoptive parents** – Consistent contact with prospective families, helpdesk for prospective families, guidebooks, brochures or paperwork that explains the process and steps that must be completed to become an approved adoptive parent, etc. *Explore Adoption* Web site has a FAQ page that would assist with this.

**Pre-adoption training for prospective parents** – Adoptive parent training (e.g., MAPP) and family self-assessment to determine if adoption is a feasible plan for prospective adoptive family, adoption specific training after completion of the MAPP class, etc.

**Pre-adoption information for “waiting” parents** (i.e., family approved for adoption) – Referrals to local adoptive parent support groups; consultation, brochures or paperwork explaining the process and steps that must be completed once a child is identified as a possible match for approved adoptive families; adoption-specific training after receiving approval to adopt; etc.

**Placement case management for “pre-adoptive” parents** – Match staffing, placement supervision, child history disclosure, anticipated child-specific services and training needs, etc.

### **III. PROGRAMS CURRENTLY PROMOTING ADOPTION**

*Description of programs currently promoting adoption (including information on the impact, cost-effectiveness, and sources of funding) §39.001(8) (b) 6.d*

Children's Home Society (CHS) provides the Circuit's adoption promotion services for Circuit 19 through a contract with our Community Based Care Lead agency, United for Families. Additional funding, including required match to the Promoting Safe and Stable Families Adoption funding, is received from the United Way of Martin County, Children's Services Councils of Saint Lucie and Okeechobee, and Scripps Treasure Coast Foundation. Since the Heart Gallery program began through the efforts of local funders, visibility of the program within the community has been positively impacted, and adoptive families recruited as a result of this improved exposure has been trending upward.

#### **Adoption Promotion and Awareness Efforts about Children in Foster care who need adoptive families**

The Adoption Marketing Coordinator leads the effort to promote local awareness of adoption in general and the needs of our local children specifically, throughout all four Circuit 19 counties. The primary strategies include:

- ❖ The Heart Gallery displayed at many various local community events and functions throughout all four counties during the year. The Heart Gallery is funded in part by Children's Services Council of St Lucie County.
- ❖ Children's Home Society and Hibiscus Children's Center, our foster care recruitment agency, partner to conduct MAPP classes (foster care and adoptive parent training). CHS adoption staff facilitate one of the sessions to educate on the differences between becoming an adoptive parent and a foster parent. Both programs are primarily supported with family safety/community based care funds. 149 referrals to MAPP were provided in FY 08/09.
- ❖ Targeting of local faith-based agencies/churches and minority community organizations/groups to promote adoption awareness through the Heart Gallery and group presentations.
- ❖ Coordination with local media to highlight a different child's photo and biography in newspapers the first Sunday of each month.
- ❖ During the month of November (National Adoption Awareness Month), CHS' adoption program conducts an open house celebration, which honors families who have adopted and at which CHS pledges its commitment to the communities to finding new families for all of our children awaiting adoption. Scripps Treasure Coast provides additional media support during this time, including news articles highlighting success stories of local adoptive families.
- ❖ Circuit 19 incorporates the use of the Explore Adoption Program by placing pictures and biographies of children who have been in an adoption status the longest and at times, are the most difficult to place on the Explore Adoption website. The Adoption Marketing Coordinator uses the Explore Brochures at community functions and Circuit 19's contact information is posted on the Explore Adoption website as well.
- ❖ Over the past year, Children's Home Society's adoption program has been fortunate to promote the need for adoptive homes through our partnership with Forever Family and CBS-12. Forever Family produces mini-documentaries of our local children available for adoption and negotiates free media time on major broadcast stations. CBS-12 is that station and the stories air on Tuesdays during the 5 p.m. newscast. Sixteen Forever

Family segments featuring our local children have been produced thus far, including three success stories.

### **Targeted recruitment efforts**

- ❖ Children's Home Society Adoption staff are involved in community events 3-4 times per month covering the entire four county area with information and direct expertise in order to help provide information and assistance to prospective parents. Currently, Circuit 19 collects county specific recruitment data for United Way funders. This practice began in October of 2007 and currently, there is not enough data to identify cost effectiveness.
- ❖ CHS adoption staff also provides training and lectures to civic, business and faith based groups 1-2 times per month on all adoption related issues. This area has been identified by our Circuit as one that could benefit from additional strategic planning in our approach, especially as it relates to Faith –Based outreach.

### **Child-specific recruitment efforts**

All children transferred to the adoption program for whom a permanent home has not been identified, known as recruitment children, are assigned a specific adoption case manager. The case manager assesses each child's history, circumstances and needs and then works with key individuals in the child's life to develop an individual recruitment plan, targeted specifically to the child's needs. These recruitment plans are updated annually or more often as needs are identified or as new information is obtained.

All recruitment children are linked with our Adoption Marketing Coordinator who schedules a professional photograph to be taken. These photos, along with a biography of the child, is placed on the DCF Statewide Adoption Exchange System, the CHS adoption web page and also included in the Heart Gallery. An ongoing partnership with local media highlights a different child's photo and biography in newspapers the first Sunday of each month.

In fiscal year 2008-2009, the Heart Gallery is credited with matching 20 children with forever families. Seventeen of these children, or 100% of those finalized with recruited families, resulted in finalized adoptions by the end of the fiscal year. The average annual cost per child in out of home care is \$6,203, and the annual cost of the Heart Gallery/recruitment program is \$65,000. The Heart Gallery as the primary vehicle for recruitment pays for itself in savings to the system with just 11 adoptions per year.

### **Orientation for prospective adoptive parents**

The Adoption Marketing Coordinator conducts monthly Adoption Orientation meetings for families who express interest in adoption. During FY 08/09, 60 individuals attended adoption orientation meetings.

For all prospective families wanting to obtain an adoption home study, families are referred by CHS adoption staff to Hibiscus Children's Center for enrollment into the MAPP classes, which are currently conducted jointly with parents interested in fostering. A total of 149 families were referred to MAPP by CHS during FY 2008-2009. Of the families referred to MAPP training in Fiscal Year 2008-2009, 31 (21%) completed MAPP training. CHS adoption staff follows up on all referrals to ensure the prospective family has been enrolled and the CHS adoption staff conduct a specific session targeted to adoptive parents. CHS adoption staff continues to follow up with these prospective families after they complete MAPP to begin recruitment for available

children. The joint approach to training prospective foster and adoptive parents has proven cost effective through containing administrative costs that would be duplicated if separate efforts were conducted.

#### **Assistance (navigating the system) for prospective adoptive parents**

The current structure of our CHS adoptions promotion program provides for awareness, marketing, recruitment and case management of children available for adoption. Therefore, the capacity of CHS adoption staff to fully support the needs of prospective adoptive families is limited, and an area identified by our team as a need to be addressed.

#### **Pre-adoption training for prospective parents**

Services in this area of the continuum are currently limited to the MAPP training classes described above. This is an area identified by our team as a need to be addressed.

#### **Pre-adoption information for “waiting” parents**

CHS staffs an Adoption information line where all calls are tracked and an adoption staff member responds to all inquiries within 24 hours. Almost half the calls received were from families interested in the adoptive process, and resulted in a referral to Hibiscus Children’s Center for MAPP training.

<b>County</b>	<b>Inquiries</b>	<b>Referrals</b>
<b>Saint Lucie</b>	<b>181</b>	<b>64</b>
<b>Martin</b>	<b>78</b>	<b>60</b>
<b>Indian River</b>	<b>52</b>	<b>18</b>
<b>Okeechobee</b>	<b>20</b>	<b>7</b>
<b>CIRCUIT TOTAL</b>	<b>331</b>	<b>149</b>

Families that have completed a Home Study and are seeking information on available children are directed to the Explore adoption website, and invited as appropriate to local events promoting available children.

#### **Placement case management for “pre-adoptive” parents**

Services in this area are currently limited to responses to pre-adoptive parent inquiries and is recognized as an area that our Circuit would like to expand upon. We believe that by reaching out to families who have expressed an interest in adopting and successfully engaging them in support processes typically available only for adoptive families who have been matched with children and are in the pre- and post- finalization phase, we may experience greater success in establishing support bonds among adoptive parents at all phases. These bonds may provide greater augmentation of assistance with navigating the system, training and mentoring that is currently limited within our system. The development of the support systems is detailed more fully in our Adoption Support Plan.

Finally, an additional and unique source of support comes from local attorneys, who provide adoption finalization legal services pro-bono. The donations are counted as local in-kind match for the United for Families’ Promoting Safe and Stable Families funding of the adoptions program.

#### **IV. PLAN PRIORITIES**

*A description, documentation, and priority ranking of local needs related to the promotion of adoption based upon the continuum of programs (see Part 3-II) and services (see Part 3-III). §39.001(8) (b) 6.g*

#### **Priority Ranking of County-Level Needs Related to the Promotion of Adoption for Children in Need of Adoptive Families**

**County: All Counties in Circuit 19 (Martin, Saint Lucie, Indian River and Okeechobee)**

<b>Priority</b>	<b>County-Level Need with Description</b>	<b>Types of Approaches Warranted to Meet this Priority Need</b> <input type="checkbox"/> Adoption Awareness <input type="checkbox"/> Targeted Recruitment <input type="checkbox"/> Child-Specific Recruitment <input type="checkbox"/> Orientation for Prospective Adoptive Parents <input type="checkbox"/> Assistance for Prospective Adoptive Parents <input type="checkbox"/> Pre-adoption Training for Prospective Adoptive Parents <input type="checkbox"/> Pre-adoption Information for “Waiting” Parents <input type="checkbox"/> Placement Case Management for “Pre-adoptive” Parents
1	Targeted recruitment for available children in care greater than 24 months	X Adoption Awareness X Targeted Recruitment X Child-Specific Recruitment X Orientation for Prospective Adoptive Parents X Assistance for Prospective Adoptive Parents
2	Reduced time frames from child’s placement in out of home care to reunification or Termination of Parental Rights decision and to availability of child for recruitment efforts	Pre-adoption Training for Prospective Adoptive Parents Pre-adoption Information for “Waiting” Parents Placement Case Management for “Pre-adoptive” Parents
3	Expanded support process for prospective families with the adoptions program and support systems (This priority to be addressed through the Circuit’s adoption support plan)	Orientation for Prospective Adoptive Parents Assistance for Prospective Adoptive Parents Pre-adoption Training for Prospective Adoptive Parents Pre-adoption Information for “Waiting” Parents Placement Case Management for “Pre-adoptive” Parents

## **V. PLAN OF ACTION FOR THE PROMOTION OF ADOPTION**

*A plan for steps to be taken in meeting identified needs, including the coordination and integration of services to avoid unnecessary duplication and cost, and for alternative funding strategies for meeting needs through the reallocation of existing resources, utilization of volunteers, contracting with local universities for services, and local government or private agency funding §39.001(8)(b)6.h*

### ***Vision***

Florida's highest priority is that children are raised in healthy, safe, stable, and nurturing families.

### ***Mission***

To serve as a blueprint that will be implemented to provide for the care, safety, and protection of all of Florida's children in an environment that fosters healthy social, emotional, intellectual, and physical development.

### ***Outcome***

All families and communities ensure that children are safe and nurtured and live in stable environments that promote well-being.

### ***Goal 1***

Increase the percent of children adopted within 12 months of becoming legally free for adoption as measured by a five year upward trend in the circuit's performance. The starting point for this trend (baseline) will be the fiscal year 2008-09 rate of 67% percent. County performance will trend upward from baselines as follows:

Martin County- 50%; Indian River- 79%; Okeechobee -80% and St. Lucie- 66%

### ***Goal 2***

Decrease the percent of children legally free for adoption who have been waiting for adoption since the date of termination of parental rights (TPR) for more than 12 months as measured by a five year downward trend in the circuit's performance. The starting point for this trend (baseline) will be the fiscal year 2008-2009 rate of 94% percent. Martin County- 100%; Indian River- 85%; Okeechobee- 100%; and St. Lucie 97%.

**Strategy 1**

By 30 June 2015, Circuit 19 will implement a faith based adoption initiative.

<b>Priority Level:</b> 1	<b>Priority Need:</b> Targeted recruitment for available children in care greater than 24 months
<b>Types of Approaches Warranted:</b> X Adoption Awareness X Targeted Recruitment X Child-specific Recruitment X Orientation for Prospective Adoptive Parents	<b>Types of Approaches Warranted (continued):</b> X Assistance for Prospective Adoptive Parents X Pre-adoption Training for Prospective Adoptive Parents X Pre-adoption Information for “Waiting” Parents X Placement Case Management for “Pre-adoptive” Parents

**Objective 1.1: Circuit 19 will partner with Faith Based organizations to increase the number of local families wanting to adopt foster children who have been in care for long periods by 6/30/2013. This will result in a 25% increase in adoptions of kids in care greater than 24 months by 6/30/2015. Baseline: average of 2008 performance of nine families, and 2009 performance of six local families.**

**Objective 1.2 Explore One Church One Child as a potential resource for Faith based families wanting to adopt and also for targeted recruitment for children**

<b>Objective 1.1: Circuit 19 will partner with Faith Based organizations to increase the number of local families wanting to adopt foster children who have been in care for long periods by 6/30/2013. This will result in a 25% increase in adoptions of kids in care greater than 24 months by 6/30/2015. Baseline: average of 2008 performance of nine families, and 2009 performance of six local families.</b>					
<b>Action Steps</b>	<b>Measures/Benchmarks</b>	<b>Lead</b>	<b>Partners</b>	<b>Begin Date</b>	<b>End date</b>
Establish and Identify adoption/faith based liaison.	Liaison is identified	Matt Anderson	CHS, UFF, DCF and Hibiscus	7/1/2010	10/1/2010
Utilize “Explore Adoption” and Five Points technology research materials to target faith based groups in Circuit 19 who meet the identified target family types and may be willing to adopt specific, older, more challenging	Faith-based groups are identified in each county by zip code with contact information	Matt Anderson, Liaison and Hibiscus	CHS, UFF & Hibiscus	10/1/2010	Ongoing



and difficult to place children and sibling groups.					
<p>Develop needs assessments tool for the Faith Based groups, focusing attention on those identified zip code areas for our identified target family types.</p> <ul style="list-style-type: none"> <li>• What can we do to get them to adopt (survey)</li> <li>• Educate and attend events</li> <li>• Have MAPP specific to their group or community.</li> <li>• Develop Plan to actively engage them to participate in the adoption process.</li> </ul>	Assessment tool/survey is created	Matt Anderson and Liaison	CHS	10/1/2010	1/1/2011
Identify faith based groups/events and point of contact for specific individual groups in the 4 counties	Faith-based groups are identified with contact information	Matt Anderson, Liaison and Hibiscus	CHS, UFF & Hibiscus	1/1/2011	Ongoing
Engage/attend faith based community groups/events in order to administer survey	Survey tool administered and data compiled	Liaison	CHS	7/1/2011	Ongoing
Development of plan (individual & community-based) based on data gathered	Patterns/themes highlighted based on survey results	Liaison	CHS	7/1/2012	Ongoing
<p>Implement plan to the faith based groups, focusing priority attention on Faith based groups in zip codes identified for older, hard to place teens</p> <ul style="list-style-type: none"> <li>• Orientations</li> <li>• Awareness</li> <li>• Promotion</li> </ul>	Targeted faith-based groups receiving outreach based on plan.	Liaison	CHS, UFF, DCF and Hibiscus	1/1/2013	Ongoing

• Group Meetings					
Track and gather data on the number of local families adopting	Evaluation process and results documented	Liaison	CHS	1/1/2013	Ongoing

<b>Objective 1.2 Explore One Church One Child as a potential resource for Faith based families wanting to adopt and also for targeted recruitment for children</b>					
<b>Action Steps</b>	<b>Measures/Benchmarks</b>	<b>Lead</b>	<b>Partners</b>	<b>Begin Date</b>	<b>End date</b>
Establish and Identify adoption/faith based liaison	Liaison is identified	Matt Anderson	CHS, UFF, DCF and Hibiscus	7/1/2010	10/1/2010
Identify and establish contact with local One Church One Child designee	Liaison /CHS & OCOC contact person meet to explore potential for partnership	Liaison/Matt Anderson	CHS	10/1/2010	1/1/2011
Develop a collaboration based on resources with One Church One Child	Documented and tracked system of services	Matt A, Liaison and Hibiscus	CHS, UFF, DCF & Hibiscus	1/1/2011	Ongoing
Track, monitor and evaluate results from this collaboration	Evaluation process and results documented	Liaison	CHS	1/1/2011	Ongoing

**Strategy 2:** By 30 June 2015, Circuit 19 will identify inefficiencies and streamline processes in order to expedite permanency for children.

<b>Priority Level:</b> 2	<b>Priority Need:</b> Reduced time frames from Termination of Parental Rights decision to availability of child for recruitment efforts
<b>Types of Approaches Warranted:</b> <ul style="list-style-type: none"> <li><input type="checkbox"/> Adoption Awareness</li> <li><input checked="" type="checkbox"/> Targeted Recruitment</li> <li><input checked="" type="checkbox"/> Child-specific Recruitment</li> <li><input checked="" type="checkbox"/> Orientation for Prospective Adoptive Parents</li> </ul>	<b>Types of Approaches Warranted (continued):</b> <ul style="list-style-type: none"> <li><input checked="" type="checkbox"/> Assistance for Prospective Adoptive Parents</li> <li><input type="checkbox"/> Pre-adoption Training for Prospective Adoptive Parents</li> <li><input checked="" type="checkbox"/> Pre-adoption Information for “Waiting” Parents</li> <li><input checked="" type="checkbox"/> Placement Case Management for “Pre-adoptive” Parents</li> </ul>

**Objective #2.1: Evaluate the average time frames for each phase of the permanency process (entry into care and TPR goal establishment, Goal establishment and TPR finalization, and Finalization and matching with adoptive family) and identify barriers that may exist within each phase.**

Action Steps	Measures/Benchmarks	Lead	Partners	Begin Date	End date
Review and evaluate existing local circuit termination of parental rights and adoption process/procedures to identify barriers.	Completed white paper with identified barriers for each phase	Matt Anderson, CHS Ollie Harvey, UFF	DCF, Guardian ad Litem, Child Legal Services, Hibiscus Children’s Center, Family Preservation Services	7/1/2010	Ongoing
Develop plan of action to address barriers	Recommended plan of action created and presented to Dependency Court Improvement Team for appropriate action by DCIP participants.	Matt Anderson, CHS Ollie Harvey, UFF	DCF, Guardian ad Litem, Child Legal Services, Hibiscus Children’s Center, Family	1/1/2011	7/1/2011

			Preservation Services, Parent Attorney's, Circuit Court Judges		
Implementation of plan	Restructuring of relevant policies & procedures	Matt Anderson, CHS Ollie Harvey, UFF	DCF, Guardian ad Litem, Child Legal Services, Hibiscus Children's Center, Family Preservation Services, Parent Attorneys, circuit Court Judges	7/1/2011	Ongoing
Evaluation & monitoring of new policies & procedures and outcomes	Evaluation process and results documented	Matt Anderson, CHS Ollie Harvey, UFF	DCF, Guardian ad Litem, Child Legal Services, Hibiscus Children's Center, Family Preservation Services, Parent Attorneys, circuit Court Judges	7/1/2011	Ongoing

## **VI. MONITORING AND EVALUATION**

*Plans for monitoring progress and for determining the results of the adoption promotion efforts.*

### **VIA MONITORING PLAN IMPLEMENTATION**

During our planning process, the Adoption Promotion and Support Committee was one of four subcommittees established, each charged with completion of five year plan strategies, objectives, and action steps. These committees are structured to remain intact and complete implementation of action steps, progress analysis and reporting throughout the five year plan period. This charge includes ongoing identification and recruitment of community members whose involvement will further the efforts of the team in plan implementation.

Subcommittees will meet to review progress on action steps every other month, or more frequently as deemed necessary by the committee. Partners tasked with implementation efforts will complete their sections of the monitoring report template and review at the subcommittee level on a bimonthly basis. The bimonthly review will be structured to identify:

- Action steps which are completed and/or pending implementation and any barriers encountered
- Evidence of progress toward strategy achievement through review of established measures/benchmarks
- Identification of additional critical partners
- Identification of revisions needed to action plan

Every six months, a full team meeting consisting of all subcommittee members will be convened. Interested parties and stakeholder representatives identified by the subcommittees as critical to the process will be invited to participate (if not already engaged by the appropriate subcommittee). The bi-annual full team meeting will be structured to provide and/or elicit information on:

- Overview of indicator baselines and progress toward goals
- Committee level progress reports including major accomplishments and protective factors accomplishments
- Sharing of information regarding program performance
- Review of local success stories and new information on causes
- Refinement/ratification of committee-recommended action plan changes
- Identification of lessons learned, additional supports needed

The Steering Committee will meet as necessary to evaluate the monitoring structure and ensure that both the full team meetings and subcommittee meetings are successfully moving the plan forward, while capturing all essential information to support our reporting process.

### **VI. B ANNUAL PROGRESS REPORTING**

As described in VI.A. above, our bimonthly subcommittee meetings are structured to gather relevant information for our quarterly monitoring updates. The design of the meetings will also focus team members' attention on information needed to conduct the analysis required for informed decision making at the full team level. The full team meetings are structured to analyze and determine strategic direction,

while capturing information required for the Annual progress report. The subcommittee and full team meetings will be scheduled to support the team's success with accurate and timely completion of annual progress reporting.

## **VII. BARRIERS**

*A description of barriers to the accomplishment of a comprehensive approach to the promotion of adoption. §39.001(8) (b) 6.i*

Children with extensive lengths of stay in the foster care system prior to Termination of Parental Rights present special challenges for successful adoption promotion and support. The unintended impact of our rightfully diligent efforts to provide opportunity for safe and permanent reunification with the biological parents is that their children, no matter their age at removal, are growing older in care without receiving closure that will allow them some childhood normalcy. This situation frequently results in the development of deep-seated mental health issues that not only impact the child for the duration of their childhood, but complicate efforts to identify adoptive parents that may have otherwise been recruited for them. Although our plan addresses streamlining of internal processes, any opportunities that exist to streamline the case plan and court processes must continue to be identified and addressed.

## **VIII. RECOMMENDATIONS**

*Recommendations for changes that can be accomplished only at the state program level or by legislative action. §39.001(8) (b) 6.j*

Legislative action should be considered in an effort to extend adoption benefits beyond the age of 18 for adopted children still attending school. Currently, Florida Statute 409.466, Section C reads:

*“The department may provide adoption assistance to the adoptive parents, subject to specific appropriation, for medical assistance initiated after the adoption of the child for medical, surgical, hospital, and related services needed as a result of a physical or mental condition of the child which existed before the adoption and is not covered by Medicaid, Children's Medical Services, or Children's Mental Health Services. Such assistance may be initiated at any time but shall terminate on or before the child's 18<sup>th</sup> birthday.”*

The State of Florida ends Medicaid and the adoption subsidy at age 18 even though the child is still in school. By changing the last sentence in the statute to read, “*Such assistance may be initiated at any time but shall terminate upon graduation from high school or its equivalent.*” medical benefits can continue as the child attends school even after his/her 18<sup>th</sup> birthday.

## **Part 4 – PLAN FOR THE SUPPORT OF ADOPTIVE FAMILIES**

### **I. STATUS OF SUPPORT OF ADOPTIVE FAMILIES**

*Status of support of adoptive families (to be based upon such areas as the quantity and quality of adoptive parent support groups; quantity and accessibility of adoption competent mental health professionals; educational opportunities available for adoptive parents; and quantity of post adoption services counselors who provide information and referral, temporary case management for emotional support, and educational advocacy).*

#### **Quantity and Quality of adoptive parent support groups and educational opportunities**

There is currently one Adoption Therapist for the Circuit providing monthly support groups available to all adoptive parents. In these monthly groups, educational opportunities are available for the parents based on the feedback or requests from families. One group session is offered per month for the entire Circuit. The groups vary in location, days and times based on the needs and schedules of the families. Outside of these monthly groups, there are no formal mechanisms or services that provide support groups or educational opportunities for adoptive parents or for children who have been adopted.

A survey of adoptive parents requesting their feedback on support needs and training topics was conducted in the spring of 2009. 650 surveys were sent out via the adoption subsidy and asked for feedback about services and resources needed for parents. Unfortunately, the Circuit only received 15 direct responses in return; many stated they were unaware of services and requested more information. Based on the minimal response, information on services and resources are provided on a quarterly basis to all adoptive parents.

Based on responses to the survey and the current low participation in monthly support groups, we believe that adoptive parents may underestimate the possibility that they may need support in the future. Actions to address this in our previous plan consisted of the inclusion of informational flyers and contact information for the available support systems. Although our dissolutions rate is very low, (one in fiscal year 2009) related to mental health/behavioral issues, we recognize that without effective engagement in support systems, families may delay seeking assistance until such time that emotional or behavioral needs have reached a crisis point.

#### **Quantity and accessibility of adoption competent mental health therapists**

Children's Home Society employs a single, full time adoption therapist who may be reached at 772-429-2001. The Adoption Therapist is assigned to all recruitment children in the circuit. She works with potentially matched families throughout the transition period and for all post-adoption supports and services. The Adoption Therapist also serves any family who is identified as needing pre and post-adoption-related services. She does not carry a waiting list. The Adoption Therapist is available for crisis intervention/situations and has even gone out of state to work with an adoptive family to help prevent a disruption. The Adoption Therapist also makes additional referrals for other services and resources needed for a family.

Because the therapist has responsibility for case management, crisis intervention, and information and referral for the entire spectrum of families from prospective to post-finalization, our team recognizes this as an area that needs additional resources in order to fully develop a support network.

Adoption Orientation Sessions are also provided by our adoption recruiter each month to all potential and/or current adoptive parents. Meetings provide information and clarification about the process and resources available to adoptive families. The meetings provide an opportunity for prospective adoptive parents to network amongst themselves for additional supports.

CHS offers an Adoption Information Line that callers may contact for questions, supports or resources. Adoption staff, including the therapist, respond to all of these contacts. All calls or inquiries are logged and tracked daily with a response being made by the end of the following business day.

The Circuit has selected and sent a representative to the state's new adoption competence training for the trainer. Potential candidates are being actively recruited among licensed therapists for the upcoming certification process. At this time, however, there are no known adoption competent mental health therapists in any county of our circuit.



## **II. CONTINUUM OF ADOPTION SUPPORT PROGRAMS**

*Description of a comprehensive approach for providing post-adoption services (including information on sufficient and accessible parent and teen support groups; case management, information, and referral services; and educational advocacy)*  
§39.001(8) (b) 6.e

**Adoptive parent and teen support groups** – Small group opportunities for parents and teens that are accessible; configured and meeting as often as appropriate for the languages, cultures and needs of the participants in your communities; provision of support from umbrella organizations and qualified facilitators where appropriate (e.g., teen support groups); etc.

**Education and training opportunities for adoptive parents** – Education and training related to adoption issues, with an emphasis on strategies for handling loss, grief, relationship building, and “acting out” behaviors; skill-building to equip adoptive parents with the skills needed to meet the specific and developing needs of children (e.g., fetal alcohol, substance abuse, autism, etc.); providing adoption resource centers, lending libraries, newsletters, annual adoption conferences, and ongoing training and workshops for parents; etc.

**Adoption competent education and mental health assistance services for adoptive families** – Those providing education and therapeutic services have the basic knowledge and skills to effectively work with adoptive families and to empower adoptive parents and families to provide the environment necessary for ameliorating the effects of trauma (e.g., build relationships, improve relationships, develop nurturing and attachment, etc.); campaigns to recruit professionals to seek adoption competency; etc.

**Case management services for adoptive parents and children** – An intake process for families to return for needed services; designated case manager to respond to adopted children and families post-legal finalization; system to notify families of continued training, adoption workshops, and support group meetings, and resource guide that includes adoption-support information and service providers; etc.

### **III. PROGRAMS CURRENTLY SUPPORTING ADOPTIVE FAMILIES**

*Description of programs currently supporting adoptive families (including information on the impact, cost-effectiveness, and sources of funding) §39.001(8) (b) 6.d*

CHS currently provides supports and services to all adoptive families in the Circuit, based out of their Fort Pierce offices. The program is funded through the local CBC, United for Families and supports an average of 45 families and 75 children per month. This represents approximately 26% of the children who have been adopted over the past three years. Additional adoptive supports are provided by the adoption case workers working directly with the families in the respective counties. Adoption staff are available on call 24/7 to families and all services and supports are provided without cost to the families. These supports are tailored to the needs of each family, and are capable of building each of the protective factors in their approach.

#### **Adoptive parent and teen support groups**

One monthly support group targeted to post-adoptive parents is in place. The meeting, which is offered to families throughout the circuit, is held in centrally located Saint Lucie County. Attendance varies, but the group has not at this time achieved sustained involvement of adoptive parents. There are no formal supports for teens or children who have been adopted.

#### **Education and training opportunities for adoptive parents**

The circuit uses the monthly support group for adoptive parents as a vehicle to provide education and training opportunities. Outside of the monthly meeting, no formal avenues exist for this purpose.

#### **Adoption competent education and mental health assistance services for adoptive families**

The Circuit has selected and sent a representative to the state's new adoption competence training for the trainer. Potential candidates are being actively recruited among licensed therapists in each county for the upcoming certification process. An informal network of therapists with experience with adoptive families is accessed by the CHS adoption therapist for ongoing services. Further development and formalization of this network is recognized by our team as a need.

#### **Case management services for adoptive parents and children**

Our Circuit does not have a formal case management function for families who have completed the post-legal finalization period. Notices of support groups, workshops and other resources available is achieved through inclusion in the Maintenance Adoption Subsidy monthly payments. However, the majority of our support services, including case management tasks of information and referral, are handled on a one-to-one basis.

#### **Impact of Services and Cost Effectiveness Data**

The entire array of available adoption support services are currently delivered through one full time employee.

Funding for the position is provided by the Promoting Safe and Stable Families, and required local match is obtained through the Children's Services Council of St. Lucie County. The support functions are budgeted at \$65,000 per year. Approximately three percent of the time is dedicated to group support functions and the balance to individualized attention to families. Based on the average number of children and families served per month, the average cost per child for support is \$866, or \$1,444 per family. Although our experience with limited dissolutions would suggest service effectiveness, our success with increasing the numbers of children adopted continues to grow, with more than 281 children adopted over the past three years. We believe that this trend, coupled with our increased attention to outreach to those families to involve them in supports, will result in the need for support outpacing both our support delivery resources and our current delivery model.

#### IV. **PLAN PRIORITIES**

*A description, documentation, and priority ranking of local needs related to the support of adoptive families based upon the comprehensive approach (see Part 4-II) and services (see Part 4-III). §39.001(8) (b) 6.g*

#### **Priority Ranking of County-Level Needs Related to the Support of Adoptive Families**

**County:** St Lucie County

<b>Priority</b>	<b>County-Level Need with Description</b>	<b>Types of Approaches Warranted to Meet this Priority Need</b> <input type="checkbox"/> Support Groups <input type="checkbox"/> Education and Training <input type="checkbox"/> Adoption Competent Services <input type="checkbox"/> Case Management Services	<b>Protective Factors that Should be Built/Supported when Meeting this Priority Need</b> <input type="checkbox"/> Parental Emotional Resilience <input type="checkbox"/> Social Connections <input type="checkbox"/> Knowledge of Parenting and Child Development <input type="checkbox"/> Concrete Support in Times of Need <input type="checkbox"/> Nurturing and Attachment
1	Increase in the variety of county- specific array of mental health and educational supports for adoptive families	Support Groups Education and Training Adoption Competent Services Case Management Services	Parental Emotional Resilience Social Connections Knowledge of Parenting and Child development Concrete Support in Times of Need Nurturing and Attachment
2	Increase the number of new adoptive families seeking post adoptive support services before a crisis occurs	Support Groups Education and Training Adoption Competent Services Case Management Services	Parental Emotional Resilience Social Connections Knowledge of Parenting and Child development

**County: Martin**

<b>Priority</b>	<b>County-Level Need with Description</b>	<b>Types of Approaches Warranted to Meet this Priority Need</b> <ul style="list-style-type: none"> <li><input type="checkbox"/> Support Groups</li> <li><input type="checkbox"/> Education and Training</li> <li><input type="checkbox"/> Adoption Competent Services</li> <li><input type="checkbox"/> Case Management Services</li> </ul>	<b>Protective Factors that Should be Built/Supported when Meeting this Priority Need</b> <ul style="list-style-type: none"> <li><input type="checkbox"/> Parental Emotional Resilience</li> <li><input type="checkbox"/> Social Connections</li> <li><input type="checkbox"/> Knowledge of Parenting and Child Development</li> <li><input type="checkbox"/> Concrete Support in Times of Need</li> <li><input type="checkbox"/> Nurturing and Attachment</li> </ul>
1	Develop an array of county- specific array of mental health and educational supports for adoptive families	Support Groups Education and Training Adoption Competent Services Case Management Services	Parental Emotional Resilience Social Connections Knowledge of Parenting and Child development Concrete Support in Times of Need Nurturing and Attachment
2	Increase the number of new adoptive families seeking post adoptive support services before a crisis occurs	Support Groups Education and Training Adoption Competent Services Case Management Services	Parental Emotional Resilience Social Connections Knowledge of Parenting and Child development

**County: Indian River**

<b>Priority</b>	<b>County-Level Need with Description</b>	<b>Types of Approaches Warranted to Meet this Priority Need</b> <ul style="list-style-type: none"> <li><input type="checkbox"/> Support Groups</li> <li><input type="checkbox"/> Education and Training</li> <li><input type="checkbox"/> Adoption Competent Services</li> <li><input type="checkbox"/> Case Management Services</li> </ul>	<b>Protective Factors that Should be Built/Supported when Meeting this Priority Need</b> <ul style="list-style-type: none"> <li><input type="checkbox"/> Parental Emotional Resilience</li> <li><input type="checkbox"/> Social Connections</li> <li><input type="checkbox"/> Knowledge of Parenting and Child Development</li> <li><input type="checkbox"/> Concrete Support in Times of Need</li> <li><input type="checkbox"/> Nurturing and Attachment</li> </ul>
1	Development of an array of county- specific array of mental health and educational supports for adoptive families	Support Groups Education and Training Adoption Competent Services Case Management Services	Parental Emotional Resilience Social Connections Knowledge of Parenting and Child development Concrete Support in Times of Need Nurturing and Attachment
2	Increase the number of new adoptive families seeking post adoptive support services before a crisis occurs	Support Groups Education and Training Adoption Competent Services Case Management Services	Parental Emotional Resilience Social Connections Knowledge of Parenting and Child development

**County:** Okeechobee

<b>Priority</b>	<b>County-Level Need with Description</b>	<b>Types of Approaches Warranted to Meet this Priority Need</b> <input type="checkbox"/> Support Groups <input type="checkbox"/> Education and Training <input type="checkbox"/> Adoption Competent Services <input type="checkbox"/> Case Management Services	<b>Protective Factors that Should be Built/Supported when Meeting this Priority Need</b> <input type="checkbox"/> Parental Emotional Resilience <input type="checkbox"/> Social Connections <input type="checkbox"/> Knowledge of Parenting and Child Development <input type="checkbox"/> Concrete Support in Times of Need <input type="checkbox"/> Nurturing and Attachment
1	Development of an array of county- specific array of mental health and educational supports for adoptive families	Support Groups Education and Training Adoption Competent Services Case Management Services	Parental Emotional Resilience Social Connections Knowledge of Parenting and Child development Concrete Support in Times of Need Nurturing and Attachment
2	Increase the number of new adoptive families seeking post adoptive support services before a crisis occurs	Support Groups Education and Training Adoption Competent Services Case Management Services	Parental Emotional Resilience Social Connections Knowledge of Parenting and Child development

## **V. PLAN OF ACTION FOR THE SUPPORT OF ADOPTIVE FAMILIES**

*A plan for steps to be taken in meeting identified needs, including the coordination and integration of services to avoid unnecessary duplication and cost, and for alternative funding strategies for meeting needs through the reallocation of existing resources, utilization of volunteers, contracting with local universities for services, and local government or private agency funding §39.001(8)(b)6.h*

### ***Vision***

Florida's highest priority is that children are raised in healthy, safe, stable, and nurturing families.

### ***Mission***

To serve as a blueprint that will be implemented to provide for the care, safety, and protection of all of Florida's children in an environment that fosters healthy social, emotional, intellectual, and physical development.

### ***Outcome***

All families and communities ensure that children are safe and nurtured and live in stable environments that promote well-being.

### ***Goal 1***

The number of adopted children who were returned to foster care (regardless of when the adoption was finalized) in the circuit will be maintained at zero through the 2014-2015 fiscal year.

### ***Strategy 1***

By 30 June 2015, Circuit 19 will establish and implement a County- specific support structure for current adoptive parents and prospective adoptive parents

<b>Priority Level:</b> 1 and 2	<b>Priority Need:</b> Development of an array of county-specific mental health and educational supports for adoptive families. Increase the number of new adoptive families seeking post-adoptive support before a crisis occurs.	
<b>Protective Factors to be Built by the Strategy:</b> <input checked="" type="checkbox"/> Parental Emotional resiliency <input checked="" type="checkbox"/> Social Connections <input checked="" type="checkbox"/> Knowledge of Parenting and Child Development <input checked="" type="checkbox"/> Nurturing and Attachment		<b>Types of Approaches Warranted:</b> <input type="checkbox"/> Adoptive parent and teen support groups <input type="checkbox"/> Education and training opportunities for adoptive parents <input type="checkbox"/> Adoption competent mental health assistance services for parents and children <input type="checkbox"/> Case management services for adoptive parents and children

**Objective 1.1: Develop outline/model of desired support structure by December 2013**

**Objective 2.1: Implement support services in each county by December 2015**

<b>Objective 1.1: Develop outline/model of desired support structure by December 2013</b>					
<b>Action Steps</b>	<b>Measures/Benchmarks</b>	<b>Lead</b>	<b>Partners</b>	<b>Begin Date</b>	<b>End Date</b>
Establish a model development team that includes competency-trained therapists assigned to develop county-specific model including evaluation of existing and needed resources, and barriers to participation.	Core group established by 9/30/2010.	UFF Permanency Director and CHS adoptions program	DCF, CHS, UFF, Hibiscus Children's Center, community foster parents and adoptive parents, Alliance Heart Gallery Committee, mental health providers.	7/1/2010	9/30/2010
Develop model support program incorporating the continuum of support services that are not currently offered, including: <ul style="list-style-type: none"> <li>• adoption competent certified therapists in each county</li> <li>• formal network of mental health professionals working with adoptive families</li> <li>• collaboration with school systems for educational opportunities</li> <li>• teen support groups and expansion of parent support groups in all counties</li> </ul>	Concept paper detailing support structure desired.	Model Development Group	DCF, CHS, UFF, community foster parents and adoptive parents, mental health providers.	9/30/2010	6/30/2011
Prioritize development of supports based upon interest and need as identified by surveyed adoptive parents.	Prioritized list of supports to be developed in by county	UFF Permanency Director and CHS adoptions program	Model Development Group	12/30/2010	6/30/2011
Identify resources needed to implement model.	Document of needed resources including projected cost, to support new model by 6/30/2011.	UFF Permanency Director and CHS adoptions program	Model Development Group	12/30/2010	6/30/2011



<b>Objective 1.1: Develop outline/model of desired support structure by December 2013</b>					
<b>Action Steps</b>	<b>Measures/Benchmarks</b>	<b>Lead</b>	<b>Partners</b>	<b>Begin Date</b>	<b>End Date</b>
Obtain specific commitments from competency trained mental health professionals to staff appropriate segments of the support system.	Memorandum of understanding with Mental Health professionals/agencies	UFF Permanency Director and CHS adoptions program	Model Development Group	12/30/2010	3/30/2011
Complete needed adjustments to CHS Adoptions program structure to accommodate the new support program model.	Program restructuring complete by 12/01/2014.	UFF and CHS	N/A	7/1/2011	12/1/2013

**Objective 2.1: Implement support services in each county by December 2015**

<b>Action Steps</b>	<b>Measures/Benchmarks</b>	<b>Lead</b>	<b>Partners</b>	<b>Begin Date</b>	<b>End Date</b>
Decide and implement method by which resources will be publicized current adoptive families as well as prospective families, including statewide “Explore Adoption” web based resources.	Completed and implemented publicity plan	UFF and CHS	Alliance, foster parent associations, MAPP training providers	12/1/2012	6/30/2013
Schedule initial support events	Calendar of scheduled events published.	UFF, CHS	DCF, CHS, UFF, Hibiscus Children’s Center, community foster parents and adoptive parents, Alliance Heart Gallery Committee	12/1/2013	Ongoing
Develop evaluation processes to ascertain increase in the number of support systems available and the number of families seeking support.	Written evaluation process completed by 12/01/2014.	UFF Permanency Director and CHS adoptions program	DCF, CHS, UFF, Hibiscus Children’s Center	12/1/2012	12/1/2014
Implement evaluation process and measure results.	Evaluation process implemented and results documented.	UFF and CHS	DCF, CHS, UFF, Hibiscus Children’s Center	6/30/2015	Ongoing

## **VI. MONITORING AND EVALUATION**

*Plans for monitoring progress and for determining the results of the efforts to support adoptive families.*

### **VIA. MONITORING PLAN IMPLEMENTATION**

During our planning process, we established four subcommittees, each charged with completion of five year plan strategies, objectives, and action steps. Three of these committees, the Whole Child Expansion Committee, Strengthening Families Committee, and Adoption Promotion and Support Committee are structured to remain intact and complete implementation of action steps, progress analysis and reporting throughout the five year plan period. This charge includes ongoing identification and recruitment of community members whose involvement will further the efforts of the team in plan implementation.

Subcommittees will meet to review progress on action steps every other month, or more frequently as deemed necessary by the committee. Partners tasked with implementation efforts will complete their sections of the monitoring report template and review at the subcommittee level on a bimonthly basis. The bimonthly review will be structured to identify:

- Action steps which are completed and/or pending implementation and any barriers encountered
- Evidence of progress toward strategy achievement through review of established measures/benchmarks
- Identification of additional critical partners
- Identification of revisions needed to action plan

Every six months, a full team meeting consisting of all subcommittee members will be convened. Interested parties and stakeholder representatives identified by the subcommittees as critical to the process will be invited to participate (if not already engaged by the appropriate subcommittee). The bi-annual full team meeting will be structured to provide and/or elicit information on:

- Overview of indicator baselines and progress toward goals
- Committee level progress reports including major accomplishments and protective factors accomplishments
- Sharing of information regarding program performance
- Review of local success stories and new information on causes
- Refinement/ratification of committee-recommended action plan changes
- Identification of lessons learned, additional supports needed

The Steering Committee will meet as necessary to evaluate the monitoring structure and ensure that both the full team meetings and subcommittee meetings are successfully moving the plan forward, while capturing all essential information to support our reporting process.

## **VI. B ANNUAL PROGRESS REPORTING**

As described in VI.A. above, our bimonthly subcommittee meetings are structured to gather relevant information for our quarterly monitoring updates. The design of the meetings will also focus team members' attention on information needed to conduct the analysis required for informed decision making at the full team level. The full team meetings are structured to analyze and determine strategic direction, while capturing information required for the Annual progress report. The subcommittee and full team meetings will be scheduled to support the team's success with accurate and timely completion of annual progress reporting.

## **VII. BARRIERS**

*A description of barriers to the accomplishment of a comprehensive approach to the support of adoptive families. §39.001(8) (b) 6.i*

Supports are limited and adoptive parent's understanding of needs for support (until a crisis occurs) appears limited as well. The challenge we face is developing supports, and recognition of the need for the supports, simultaneously.

## **VIII. RECOMMENDATIONS**

*Recommendations for changes that can be accomplished only at the state program level or by legislative action. §39.001(8) (b) 6.j*

A legislative action should be presented in reference to the Federal Government eliminating the AFDC calculation in determining adoption assistance. The Fostering Connections and Increasing Adoptions Act of 2008 began a gradual elimination of the AFDC link, beginning on October 1, 2009. By 2018, regardless of the child's birthparent's income, all children adopted from foster care who meet the special needs definitions will be IV-E eligible. Between now and 2018, eligibility will be phased in by age:

At the Treasure Coast Legislative Summit held in 2009, it was discussed that following the first year of The Fostering Connections and Increasing Adoptions Act of 2008, a review of how it affected/benefited children in Circuit 19 could be conducted.

A study entitled, "*Raising Cut-Off: The Empirical Case for Extending Adoption and Guardianship Subsidies from Age 18 to 21*" was conducted through the American University in an effort to discover whether differences in cutoff ages for federal support are likely to dis-incentivize permanency. It compared the number adoptions from foster care in the states that extend adoption subsidies to age 21 to the number of adoption in states that choose not to extend the subsidies and found that states that extend subsidies create more adoptions for foster children than states that do not. Based on the information provided, we believe that legislative action would provide additional incentive to adoption of older children.

## **Primary Prevention**

### **1. Adult Education**

<b>Agency Name</b>	<b>Youth Guidance Mentoring &amp; Activities Program</b>
Program Name	Youth Guidance
Target Audience	Single Parent, Children at Risk
Program Description	One on One Match with Mentor, group activities for children who are not yet matched.
Counties Served	Indian River County
Frequency of Service Provision	M-F 8am to 5pm, weekends
Impact Description	Not Given
Cost Effectiveness Description	Not Given
Source(s) of Funding	United Way Grants, Indian River County, Private Donations
Protective Factors built by the Strategy	Social Connections, Knowledge of Parenting & Child Development, Concrete Support in Times of Need, Nurturing & Attachment
Eligibility Requirements	Not Given

### **2. Community Development**

<b>Agency Name</b>	
Program Name	
Target Audience	
Program Description	
Counties Served	
Frequency of Service Provision	
Impact Description	
Cost Effectiveness Description	
Source(s) of Funding	
Protective Factors built by the Strategy	
Eligibility Requirements	

### **3. Community Support for Families**

<b>Agency Name</b>	<b>Building Bridges to Youth Inc.</b>
Program Name	Building Bridges to Youth Inc.
Target Audience	General Public, At risk youth
Program Description	The mission of the Building Bridges Initiative is to identify and promote practice and policy initiatives that will create strong and closely coordinated partnerships and collaborations between families, youth, community- and residentially-based treatment and service providers, advocates and policymakers to ensure that comprehensive services and supports are family-driven, youth-guided, strength-based, culturally and linguistically competent, individualized, evidence and practice-informed, and consistent with the research on sustained positive outcomes.
Counties Served	Martin County
Frequency of Service Provision	Evenings, Weekends
Impact Description	Not Given
Cost Effectiveness Description	Not Given
Source(s) of Funding	Donations
Protective Factors built by the strategy	Social Connections, Concrete Services in Times of Need, Nurturing & Attachment
Eligibility Requirements	Not Given

<b>Agency Name</b>	<b>Florida Immigrant Advocacy Center</b>
Program Name	Florida Immigrant Advocacy Center
Target Audience	Immigrant Children and Their Families/Caregivers
Program Description	Education regarding family safety, legal rights and remedies involving victims of domestic violence and crimes, identifying & working with victims of human trafficking, rights and remedies available to abandoned, abused & neglected children in Florida.
Counties Served	Martin, St. Lucie, Indian River, Okeechobee Counties
Frequency of Service Provision	M-F 8am – 5 pm, Special Events
Impact Description	Not Given
Cost Effectiveness Description	All cost effective data analyzed at the federal level
Source(s) of Funding	Florida Bar Foundation, Dept of Justice (LAV OVW)
Protective Factors built by the strategy	Parental Emotional Resilience, Social Connections, Knowledge of Parenting and Child Development, Concrete Support in Times of Need
Eligibility Requirements	Immigrant to the United States

<b>Agency Name</b>	<b>ALPI</b>
Program Name	School Readiness Program
Target Audience	Families at Risk
Program Description	Public Service Announcements via radio, community television, billboards, shopping cart advertisements, and newspapers. Management team has visited local businesses to promote availability of services. Agency sponsored Family Fun Fair. Agency also participated in various public events throughout the year.
Counties Served	Not Given
Frequency of Service Provision	Not Given
Impact Description	Not Given
Cost Effectiveness Description	Not Given
Source(s) of Funding	State Grant Dollars
Protective Factors built by the strategy	Not Given
Eligibility Requirements	Funding Categories, Protective Services, ages birth to 13, cash assistance ages birth to 13, income eligible birth to kindergarten.

<b>Agency Name</b>	<b>YMCA of the Treasure Coast</b>
Program Name	Strong Families
Target Audience	General Public, low income children and families
Program Description	Afterschool care for children. Includes indoor/outdoor games, team sports, arts and crafts, skating, gymnastic activity, homework help and snack time.
Counties Served	Martin County
Frequency of Service Provision	After school until 6:15 pm and summer from 7:30-5:30
Impact Description	Not Given
Cost Effectiveness Description	Not Given
Source(s) of Funding	Parent Fees, Early Learning Coalition, Children's Services Council of Martin County
Protective Factors built by the strategy	Social Connections, Knowledge of Parenting & Child Development
Eligibility Requirements	Not Given

<b>Agency Name</b>	<b>Treasure Coast Hospice</b>
Program Name	Counseling Services
Target Audience	General Public, Families grieving due to death of loved one or anticipated death due to illness.

Program Description	Any resident of Martin, Okeechobee or St. Lucie County with a limited life expectancy of six months to one year.
Counties Served	Martin, St. Lucie, Okeechobee Counties
Frequency of Service Provision	M-F 8am-5pm, Evenings, Weekends
Impact Description	Not Given
Cost Effectiveness Description	Not Given
Source(s) of Funding	Grants and Donations
Protective Factors built by the strategy	Parental Emotional Resilience, Social Connections, Knowledge of Parenting & Child Development, Concrete Support in Times of Need, Nurturing & Attachment
Eligibility Requirements	Not Given

<b>Agency Name</b>	<b>Boys &amp; Girls Club</b>
Program Name	Boys & Girls Club
Target Audience	Children 6-18 years old
Program Description	Provides educational, cultural, leadership, recreational and athletic activities to youth when they are not in school.
Counties Served	Martin County.
Frequency of Service Provision	School Year M-F 2pm-6:30 pm, Summer M-F 7:30 am-5:30 pm
Impact Description	Not Given
Cost Effectiveness Description	Not Given
Source(s) of Funding	Not Given
Protective Factors built by the strategy	Not Given
Eligibility Requirements	Not Given



#### 4. Concrete Services

Agency Name	Department of Children and Families
Program Name Target Audience	ACCESS Florida Families/ Elderly/Disabled who are under poverty levels.
Program Description  Counties Served Frequency of Service Provision	State Program to assist families with food, health insurance, cash assistance. Martin, St. Lucie, Indian River, Okeechobee Counties Applications taken 24/7 on line.
Impact Description	Not Given
Cost Effectiveness Description	Not Given
Source(s) of Funding	State of Florida, Federal Funding, USDA
Protective Factors built by the strategy	Concrete Support in Times of Need, Community Support for Families
Eligibility Requirements	Income, Asset limits for Household

Agency Name	Children's Home Society
Program Name Target Audience	Wavecrest Shelter CINS/FINS - Child in need of services / family in need of services 12-17 year olds
Program Description  Counties Served Frequency of Service Provision	Residential and Non-Residential Treatment for Teens. Martin, St. Lucie, Indian River, Okeechobee Counties. 24/7
Impact Description	Not Given
Cost Effectiveness Description	Not Given
Source(s) of Funding	DJJ/Florida Network, Children's Home Society.
Protective Factors built by the strategy	Knowledge of Parenting and Child Development
Eligibility Requirements	Not Given

## 5. Family Supportive Services

<b>Agency Name</b>	<b>Father and Child Resource Center</b>
Program Name	Father and Child Resource Center
Target Audience	No restrictions
Program Description	Assist fathers to fulfill their responsibilities: physical, emotional, financial and moral, to their children.
Counties Served	St. Lucie County
Frequency of Service Provision	M-F 8 am- 5 pm, evenings
Impact Description	Not Given
Cost Effectiveness Description	Not Given
Source(s) of Funding	Children's Services Council SLC, Early Learning Coalition SLC
Protective Factors built by the strategy	Parental Emotional Resilience, Social Connections, Knowledge of Parenting and Child Development
Protective Factors built by the strategy	Parental Emotional Resilience, Social Connections, Knowledge of Parenting and Child Development
Eligibility Requirements	Not Given
Agency Name	Healthy Families
Program Name	Helping People Succeed
Target Audience	General Public, At Risk Families
Program Description	Offers support, guidance and education to parents who are experiencing stressful life situations. Through intensive home visitation, services promote positive parent-child relationships, healthy child development, problem-solving skills, as well as linkages to health and other support services families may need.
Counties Served	Martin, Okeechobee Counties
Frequency of Service Provision	M-F 8 am- 5 pm
Impact Description	Five Year Independent Quasi-Experimental Evaluation - Impact Findings - Healthy Families participants receiving home visiting services had 58% less child abuse and neglect at 24 months compared to the comparison group who had little or no services. -Those who stayed in the program and completed were

	<p>1.5 times more likely to be employed at 36 months than the group receiving little or no service.</p> <ul style="list-style-type: none"> <li>-Of the completers, 50% were employed at 36 months compared to 40% of the comparison group</li> <li>- mothers who received services for 3 years or more were significantly more likely to read to their children than mothers in comparison groups.</li> </ul> <p>Healthy Families Performance Measures</p> <ul style="list-style-type: none"> <li>- free from verified abuse and neglect during services - 98%</li> <li>- free from verified abuse and neglect within 12 months of completing the program - 98%</li> <li>- immunized by age 2 - 91%</li> <li>- well child checks by age 2 -90%</li> <li>- well child checks over age 2 - 96%</li> <li>- improved self-sufficiency - 82%</li> <li>- participant connected to medical provider - 99%</li> <li>- target child connected to medical provider - 99%</li> <li>- no subsequent pregnancy within 2 years after birth of target child - 97%</li> </ul>
Cost Effectiveness Description	<p>Cost avoidance analysis - methodology based on the study published by Prevent Child Abuse America in and the PEW Charitable Trusts.</p> <p>The cost associated with child maltreatment is more than \$87,000 per child annually, compared to an average annual cost of \$1,844 per child for Healthy Families services. This includes costs associated with hospitalization, child welfare services, special education, juvenile justice, adult criminal justice and lost productivity. The cost avoidance information is based on amounts adjusted for 2008-2009. The costs associated with each child include both direct (costs associated with maltreatment) and indirect costs (costs over the child's lifetime)</p>
Source(s) of Funding	<p>Children's Services Council, United Way, United for Families, DCF, and private donations.</p> <p>Parental Emotional Resilience, Social Connections, Knowledge of Parenting and Child Development, Concrete Support in Times of Need, Nurturing &amp; Attachment</p>
Protective Factors built by the strategy	<p>Parental Emotional Resilience, Social Connections, Knowledge of Parenting and Child Development, Concrete Support in Times of Need, Nurturing &amp; Attachment</p>
Eligibility Requirements	<p>Not Given</p>

Agency Name	Healthy Start
Program Name Target Audience	Mom Care Pregnant Women and Teens
Program Description  Counties Served Frequency of Service Provision	Access to prenatal care and education for all women and families. Assistance in choosing a prenatal provider, follow-up services to ensure you are able to keep your health care appointments, referrals to WIC, Healthy Start and other resources & programs when needed. Help choosing a pediatrician prior to delivery & assistance applying for newborn insurance. Not Given Not Given
Impact Description	Not Given
Cost Effectiveness Description	Not Given
Source(s) of Funding	Healthy Start Coalition and State General Revenue
Protective Factors built by the strategy	Not Given
Eligibility Requirements	Not Given

<b>Agency Name</b>	<b>CASTLE</b>
Program Name Target Audience	Positive Parenting Open to families with pregnancy or newborn
Program Description  Counties Served Frequency of Service Provision	A support group for parents who are interested in learning new parenting skills, including positive discipline techniques and ways to improve communication with their children. Educational workshops and seminars establish state of the art parenting techniques in a group setting. Not Given Not Given
Impact Description	Not Given
Cost Effectiveness Description	Not Given
Source(s) of Funding	Children's Services Council, United Way, United for Families, DCF, Private donations.
Protective Factors built by the strategy	Not Given
Eligibility Requirements	Not Given
Agency Name	Hibiscus Children's Center
Program Name	Hibiscus Children's Mental Health Program

Target Audience	Children between the ages of 0-18 years and their families living in the counties of Martin, St. Lucie, Indian River and Okeechobee of Florida.
Program Description  Counties Served Frequency of Service Provision	The Hibiscus Mental Health Program provides outpatient mental health services to children 0-18 and their families including psychiatric services. Martin, St. Lucie, Indian River, Okeechobee Counties as needed &/or indicated through a referral
Impact Description	Not Given
Cost Effectiveness Description	Not Given
Source(s) of Funding	Federal Government State Government Local Government.
Protective Factors built by the strategy	Not Given
Eligibility Requirements	Children between the ages of 0-18 years and their families living in the counties of Martin, St. Lucie, Indian River and Okeechobee of Florida

<b>Agency Name</b>	<b>CASTLE</b>
Program Name Target Audience	Strong Fathers/Strong Families Incarcerated Fathers recently released
Program Description  Counties Served Frequency of Service Provision	The Strong Fathers/Strong Families program is designed to promote responsible fatherhood in incarcerated fathers, and responsible parenting in at-risk families. Not Given Not Given
Impact Description	Not Given
Cost Effectiveness Description	Not Given
Source(s) of Funding	Children's Services Council, United Way, United for Families, DCF, Private Donations.
Protective Factors built by the strategy	Not Given
Eligibility Requirements	Not Given

<b>Agency Name</b>	<b>CASTLE</b>
Program Name Target Audience	Valued Visits Benefits individuals who are under a court-mandated visitation schedule. In most situations, there is a fear of domestic violence or child abuse that makes unsupervised visitation an unacceptable option.

Program Description	Provides a safe and nurturing place for non-residential parents to have supervised visitation with their children. Nearly 1,500 visits take place each year. Monitored exchanges are also available through this program.
Counties Served	Not Given
Frequency of Service Provision	Not Given
Impact Description	Not Given
Cost Effectiveness Description	Not Given
Source(s) of Funding	Children's Services Council, United Way, United for Families, DCF, Private Donations.
Protective Factors built by the strategy	Not Given
Eligibility Requirements	Not Given

<b>Agency Name</b>	<b>New Horizons of the Treasure Coast</b>
Program Name	In Patient and Out Patient Services
Target Audience	General Population with Mental Health Issues
Program Description	In patient and out patient mental health counseling
Counties Served	Martin, St. Lucie, Indian River, Okeechobee Counties.
Frequency of Service Provision	24/7 for Residential 8 am to 5 pm Out Patient
Impact Description	Not Given
Cost Effectiveness Description	Not Given
Source(s) of Funding	DCF, County
Protective Factors built by the strategy	Parental Emotional Resilience, Social Connections, Knowledge of Parenting & Child Development, Concrete Support in Times of Need, Nurturing & Attachment
Eligibility Requirements	Not Given
Agency Name	Catholic Charities of Martin County
Program Name	Counseling
Target Audience	Couples, Families, Individuals
Program Description	Counseling provided by clinical social workers and marriage and family therapists. Problem pregnancy counseling. Counseling and supportive services for pregnant women. Substance abuse counseling.
Counties Served	Martin County
Frequency of Service Provision	M-F 9am-5pm, some evenings

Impact Description	Not Given
Cost Effectiveness Description	Not Given
Source(s) of Funding	United Way Martin County
Protective Factors built by the strategy	Parental Emotional Resilience, Social Connections, Knowledge of Parenting & Child Development, Concrete Support in Times of Need, Nurturing & Attachment
Eligibility Requirements	Not Given

<b>Agency Name</b>	<b>Tykes &amp; Teens</b>
Program Name Target Audience	General Mental Health Individuals and Families
Program Description  Counties Served Frequency of Service Provision	Provides individual and family therapy to address general mental health issues including anxiety, depression, trauma, behavioral issues, and adjustment to grief/loss issues. Martin, St. Lucie, Okeechobee Counties M-F 8am-5pm
Impact Description	68% of General Mental Health Clients closed successfully and of those 91% had a 20% increase in their CGAS score
Cost Effectiveness Description	Not Given
Source(s) of Funding	DCF, Children's Services Council MC, United Way MC, UFF, Medicaid and third party insurance
Protective Factors built by the strategy	Not Given
Eligibility Requirements	Not Given

<b>Agency Name</b>	<b>Baby Steps BRAIN</b>
Program Name	Helping People Succeed
Target Audience	Families who have a newborn
Program Description	B.R.A.I.N. (Building Readiness Among Infants Now) provides educational home visits and developmental monitoring to all families with newborns.
Counties Served	Martin & St. Lucie Counties
Frequency of Service Provision	Not Given
Impact Description	Not Given
Cost Effectiveness Description	Not Given
Source(s) of Funding	Not Given
Protective Factors built by the strategy	Not Given
Eligibility Requirements	Not Given

<b>Agency Name</b>	<b>Safe Families</b>
Program Name	CASTLE
Target Audience	Families
Program Description	Professional staff goes into homes to provide parent education and supportive counseling to families at risk of abusing or neglecting their children.
Counties Served	Martin, St. Lucie, Indian River, Okeechobee Counties.
Frequency of Service Provision	Not Given
Impact Description	98% of families do not abuse / re-abuse their children for up to one year after enrollment
Cost Effectiveness Description	Safe Families operates at a cost of \$3,000 per family per year. This is less than the average, per year cost of Healthy Families (a comparable home visiting program) which is \$3,348 according to the Healthy Families America web-site.
Source(s) of Funding	Children's Services Council, United Way, United for Families, DCF, Private Donations.
Protective Factors built by the strategy	Not Given
Eligibility Requirements	Not Given



<b>Agency Name</b>	<b>Helping People Succeed</b>
Program Name	Healthy Families
Target Audience	General Public, pregnant or with newborn
Program Description	Offers support, guidance and education to parents who are experiencing stressful life situations. Through intensive home visitation, services promote positive parent-child relationships, healthy child development, problem-solving skills, as well as linkages to health and other support services families may need.
Counties Served	Martin, St. Lucie, Indian River, Okeechobee Counties
Frequency of Service Provision	M-F 8am-5pm
Impact Description	Not Given
Cost Effectiveness Description	Not Given
Source(s) of Funding	DCF, BNET Children's Services Councils
Protective Factors built by the strategy	Not Given
Eligibility Requirements	Pregnant or Newborn in family

## 6. Information and Referral Hotlines

<b>Agency Name</b>	<b>Whole Child Connection of Martin County</b>
Program Name	Whole Child Connection of Martin County
Target Audience	General Public
Program Description	Referral service for children 0-18 and their families
Counties Served	Martin County
Frequency of Service Provision	Not Given
Impact Description	Not Given
Cost Effectiveness Description	Not Given
Source(s) of Funding	Children's Services Council of Martin County
Protective Factors built by the Strategy	Not Given
Eligibility Requirements	Not Given

## 7. Public Awareness and Education Campaigns

<b>Agency Name</b>	<b>ALPI/Head Start</b>
Program Name Target Audience	Child Abuse Prevention Training/Awareness. General Public, Families with Special Needs and or at Risk
Program Description Counties Served Frequency of Service Provision	Child Abuse Prevention Training and Awareness. St. Lucie County M-F 8am-5 pm
Impact Description	Not Given
Cost Effectiveness Description	Not Given
Source(s) of Funding Protective Factors built by the strategy	Dept Health and Human Services, United Way Knowledge of Parenting and Child Development, Nurturing & Attachment
Protective Factors built by the strategy	Knowledge of Parenting and Child Development, Nurturing & Attachment
Eligibility Requirements	Not Given

<b>Agency Name</b>	<b>Martin County Health Department</b>
Program Name Target Audience	Health Start Case Coordination Families with Special Needs, Pregnant Women and Families, At Risk Families
Program Description Counties Served Frequency of Service Provision	General media and education campaigns on Martin County Public Health Services. Martin County M-F 8am-5pm
Impact Description	Not Given
Cost Effectiveness Description	Not Given
Source(s) of Funding	Head Start Coalition and State General Revenue
Protective Factors built	Not Given

by the strategy	
Eligibility Requirements	Not Given

<b>Agency Name</b>	<b>Tykes and Teens</b>
Program Name	Tykes & Teens
Target Audience	At Risk Families
Program Description	Red Ribbon Week, Parents Who Host Lose the Most, Alcohol Awareness Month, Healthy Bodies, Healthy Minds, recent development of Prevention Department will expand our campaigns.
Counties Served	Not Given
Frequency of Service Provision	Not Given
Impact Description	95% of families completing services have no verified abuse for one year after services
Cost Effectiveness Description	Not Given
Source(s) of Funding	Children's Services Council, United Way
Source(s) of Funding	Not Given
Protective Factors built by the strategy	
Eligibility Requirements	Not Given

<b>Agency Name</b>	<b>Deaf and Hard of Hearing Services of the Treasure Coast, Inc.</b>
Program Name	Dangerous Decibels Program
Target Audience	Children in Elementary Schools
Program Description	Educational Program in the 4 <sup>th</sup> Grade about protecting hearing.
Counties Served	Martin, St. Lucie, Indian River, Okeechobee Counties
Frequency of Service Provision	M-F 8am-5pm
Impact Description	Not Given
Cost Effectiveness Description	Not Given

Source(s) of Funding	United Way, private donations, State phone on loan program revenues.
Protective Factors built by the strategy	Not Given
Eligibility Requirements	Not Given

<b>Agency Name</b>	<b>St. Lucie County Health Department</b>
Program Name	Information/Education Programs
Target Audience	General Public
Program Description	We provide “Hands are for Holding, Not Hitting” Posters in clinic with Hotline Number.
Counties Served	St. Lucie County
Frequency of Service Provision	M-F 8am-5pm
Impact Description	66.8% - entry into care 1st trimester 94% infant survival rate.
Cost Effectiveness Description	Not Given
Source(s) of Funding	Federal Grants, State Dollars, County Dollars, Revenue generated by self.
Protective Factors built by the strategy	Concrete Support in Times of Need
Eligibility Requirements	Not Given

<b>Agency Name</b>	<b>Martin County Health Department</b>
Program Name	Pediatrics Program
Target Audience	Children and Families
Program Description	General Information and Services Provided
Counties Served	Martin County
Frequency of Service Provision	M-F 8am-5pm
Impact Description	Not Given
Cost Effectiveness Description	Not Given

Source(s) of Funding	Medicaid, State General Revenue
Protective Factors built by the strategy	Social Connections, Knowledge of Parenting & Child Development, Concrete Support in Times of Need
Eligibility Requirements	Income Guidelines, Sliding Scale Fees

## 8. Workforce

Agency Name	Workforce Solutions
Program Name	Workforce Investment Act Youth and Adult Program & Welfare Transition Programs.
Target Audience	Unemployed, dislocated workers, TANF/Food Stamp recipients, employed workers needing skill upgrades, low income individuals and low income youth with barriers to successful employment.
Program Description	employability skills workshops, career assessment and exploration, job search and job placement assistance, supportive services such as transportation, tools, uniforms, testing fees, to assist with employment goals.
Counties Served	Martin, St. Lucie, Indian River, Okeechobee Counties
Frequency of Service Provision	Daily
Impact Description	Persons served in these programs have been trained on risk/protective factors, developmental assets, and stranger danger awareness and practice techniques trained
Cost Effectiveness Description	In 2009 the services provided by Adult Day Training enable 10 families to have respite while their family member attended the Adult Day Training program. This enabled these family members to maintain meaningful employment rather than reliance on assistance from friends or babysitters
Source(s) of Funding	State
Protective Factors built by the strategy	Not Given
Eligibility Requirements	Adult Day Training provides services to persons aged 22 and older with developmental disabilities. Supported Employment provides services to people with disabilities identified

Agency Name	Gulfstream Goodwill Industries
Program Name	Rehabilitation Centers
Target Audience	Disabled
Program Description	Not Given
Counties Served	St. Lucie, Indian River Counties.

Frequency of Service Provision	Not Given
Impact Description	Nearly 20,000 jobseekers registered for our services, and 5,753 were placed into part-time and full-time jobs at an average wage rate of \$10.87 per hour.
Cost Effectiveness Description	Cost effectiveness if monitored by state and federal agencies. Workforce Solutions applied for competitive grants to leverage funds and increase services for the Treasure Coast. An additional \$645,000 was received as a result to provide unique projects serving two counties.
Source(s) of Funding	Federal Government, State Government, Community Foundation - supported by & operated for the benefit of a specific community or region.
Protective Factors built by the strategy	Not Given
Eligibility Requirements	Adult Day Training provides services to persons aged 22 and older with developmental disabilities. Supported Employment provides services to people with disabilities identified

## **Secondary Prevention**

### **1. Adult Education**

<b>Agency Name</b>	
Program Name Target Audience	
Program Description Counties Served Frequency of Service Provision	
Impact Description	
Cost Effectiveness Description	
Source(s) of Funding	
Protective Factors built by the Strategy	
Eligibility Requirements	

### **2. Community Development**

<b>Agency Name</b>	
Program Name Target Audience	
Program Description Counties Served Frequency of Service Provision	
Impact Description	
Cost Effectiveness Description	
Source(s) of Funding Protective Factors built by the strategy	
Eligibility Requirements	

### **3. Community Support for Families**

<b>Agency Name</b>	<b>Guardian Ad Litem</b>
--------------------	--------------------------

Program Name Target Audience	Guardian Ad Litem Children in Dependency
Program Description Counties Served Frequency of Service Provision	Not Given Martin, St. Lucie, Indian River, Okeechobee Counties Appointed by Judge, as needed until case discharged by judge.
Impact Description	Not Given
Cost Effectiveness Description	Not Given
Source(s) of Funding	State and County Funding
Protective Factors built by the strategy	Not Given
Eligibility Requirements	Dependency Case

#### 4. Concrete Services

<b>Agency Name</b>	<b>County Health Department</b>
Program Name Target Audience	WIC & Nutrition Services At Risk Families, Pregnant Women, Children under Age 5
Program Description Counties Served Frequency of Service Provision	Not Given Martin, St. Lucie, Indian River, Okeechobee Counties M-F 8am-5pm
Impact Description	All data compiled at the Federal Level
Cost Effectiveness Description	Not Given
Source(s) of Funding	USDA through Florida DOH
Protective Factors built by the strategy	Parental emotional resilience, Knowledge of Parenting and Child Development, Concrete Support in Times of Need, Nurturing & Attachment
Eligibility Requirements	Pregnant, have child under age 5, less than 180% federal poverty level.

<b>Agency Name</b>	<b>Children's Home Society</b>
--------------------	--------------------------------



Program Name Target Audience	Wavecrest Shelter CINS/FINS - Child in need of services / family in need of services 12-17 year olds
Program Description  Counties Served Frequency of Service Provision	Residential and Non-Residential Treatment for Teens. Martin, St. Lucie, Indian River, Okeechobee Counties. 24/7
Impact Description	Not Given
Cost Effectiveness Description	Not Given
Source(s) of Funding	DJJ/Florida Network, Children's Home Society.
Protective Factors built by the strategy	Knowledge of Parenting and Child Development
Eligibility Requirements	Not Given

## 5. Family Supportive Services

<b>Agency Name</b>	<b>CASTLE</b>
Program Name Target Audience	Positive Parenting Open to families with pregnancy or newborn
Program Description  Counties Served Frequency of Service Provision	A support group for parents who are interested in learning new parenting skills, including positive discipline techniques and ways to improve communication with their children. Educational workshops and seminars establish state of the art parenting techniques in a group setting. Not Given Not Given
Impact Description	Not Given
Cost Effectiveness Description	Not Given
Source(s) of Funding	Children's Services Council, United Way, United for Families, DCF, Private donations.
Protective Factors built by the strategy	Not Given
Eligibility Requirements	Not Given

<b>Agency Name</b>	<b>Hibiscus Children's Center</b>
Program Name Target Audience	Hibiscus Children's Mental Health Program Children between the ages of 0-18 years and their families living in the counties of Martin, St. Lucie, Indian River and Okeechobee of Florida.
Program Description  Counties Served Frequency of Service Provision	The Hibiscus Mental Health Program provides outpatient mental health services to children 0-18 and their families including psychiatric services. Martin, St. Lucie, Indian River, Okeechobee Counties as needed &/or indicated through a referral
Impact Description	Not Given
Cost Effectiveness Description	Not Given
Source(s) of Funding	Federal Government State Government Local Government.
Protective Factors built by the strategy	Not Given
Eligibility Requirements	Children between the ages of 0-18 years and their families living in the counties of Martin, St. Lucie, Indian River and Okeechobee of Florida

<b>Agency Name</b>	<b>CASTLE</b>
Program Name Target Audience	Strong Fathers/Strong Families Incarcerated Fathers recently released
Program Description  Counties Served Frequency of Service Provision	The Strong Fathers/Strong Families program is designed to promote responsible fatherhood in incarcerated fathers, and responsible parenting in at-risk families. Not Given Not Given
Impact Description	Not Given
Cost Effectiveness Description	Not Given
Source(s) of Funding	Children's Services Council, United Way, United for Families, DCF, Private Donations.
Protective Factors built by the strategy	Not Given
Eligibility Requirements	Not Given

<b>Agency Name</b>	<b>CASTLE</b>
Program Name Target Audience	Valued Visits Benefits individuals who are under a court-mandated visitation schedule. In most situations, there is a fear of domestic violence or child abuse that makes unsupervised visitation an unacceptable option.
Program Description  Counties Served Frequency of Service Provision	Provides a safe and nurturing place for non-residential parents to have supervised visitation with their children. Nearly 1,500 visits take place each year. Monitored exchanges are also available through this program. Not Given Not Given
Impact Description	Not Given
Cost Effectiveness Description	Not Given
Source(s) of Funding	Children's Services Council, United Way, United for Families, DCF, Private Donations.
Protective Factors built by the strategy	Not Given
Eligibility Requirements	Not Given

<b>Agency Name</b>	<b>Suncoast Mental Health Center, Inc.</b>
Program Name Target Audience	Counseling Families with Special Needs, At Risk Families
Program Description Counties Served Frequency of Service Provision	Assessment of needs, child and family counseling. Martin, St. Lucie, Indian River, Okeechobee Counties M-F 8am-5pm, Evenings, Weekends
Impact Description	Not Given
Cost Effectiveness Description	Not Given
Source(s) of Funding	Megellan, Medicaid, ADM Funding, Healthease, Healthy Kids, Children's Medical Services, Sliding Scale
Protective Factors built by the strategy	Parental Emotional Resilience, Social Connections, Knowledge of Parenting & Child Development, Concrete Support in Times of Need, Nurturing & Attachment
Eligibility Requirements	Not Given

<b>Agency Name</b>	<b>Tykes &amp; Teens</b>
Program Name Target Audience	Family Abuse Treatment Program For Individuals or Families
Program Description  Counties Served Frequency of Service Provision	Provides individual and family therapy to address sexual abuse / domestic violence issues that effect families. Not Given Not Given
Impact Description	Not Given
Cost Effectiveness Description	Not Given
Source(s) of Funding	Children's Services Council, DCF, United for Families, Third Party Insurance.
Protective Factors built by the strategy	Not Given
Eligibility Requirements	Not Given

<b>Agency Name</b>	<b>New Horizons of the Treasure Coast</b>
Program Name Target Audience	In Patient and Out Patient Services General Population with Mental Health Issues
Program Description Counties Served Frequency of Service Provision	In patient and out patient mental health counseling Martin, St. Lucie, Indian River, Okeechobee Counties. 24/7 for Residential 8 am to 5 pm Out Patient
Impact Description	Not Given
Cost Effectiveness Description	Not Given
Source(s) of Funding	DCF, County
Protective Factors built by the strategy	Parental Emotional Resilience, Social Connections, Knowledge of Parenting & Child Development, Concrete Support in Times of Need, Nurturing & Attachment
Eligibility Requirements	Not Given
Agency Name	Safe Families

Program Name Target Audience	CASTLE Families at Risk
Program Description  Counties Served Frequency of Service Provision	Professional staff goes into homes to provide parent education and supportive counseling to families at risk of abusing or neglecting their children. Martin, St. Lucie, Indian River, Okeechobee Counties. Not Given
Impact Description	98% of families do not abuse / re-abuse their children for up to one year after enrollment
Cost Effectiveness Description	Safe Families operates at a cost of \$3,000 per family per year. This is less than the average, per year cost of Healthy Families (a comparable home visiting program) which is \$3,348 according to the Healthy Families America web-site.
Source(s) of Funding	Children's Services Council, United Way, United for Families, DCF, Private Donations.
Protective Factors built by the strategy	Not Given
Eligibility Requirements	Not Given

<b>Agency Name</b>	<b>Healthy Start</b>
Program Name Target Audience	Interconception Education & Counseling For mothers who have had a premature baby, a low birth weight baby, a high risk pregnancy or if have suffered a loss.
Program Description  Counties Served Frequency of Service Provision	Provide mothers with education and information for the best health between pregnancies. Planning for your next baby with at least 24 months in between pregnancies means taking care of your body, mind and family. Martin, St. Lucie, Indian River, Okeechobee Counties Not Given
Impact Description	Not Given
Cost Effectiveness Description	Not Given
Source(s) of Funding	Healthy Start Coalition and State General Revenue
Protective Factors built by the strategy	Not Given
Eligibility Requirements	Not Given
Agency Name	New Horizons of the Treasure Coast
Program Name Target Audience	Children's Mental Health Services At Risk Families, JDC Youth, Families with Special

	Needs
Program Description Counties Served Frequency of Service Provision	Not Given Martin, St. Lucie, Indian River, Okeechobee Counties M-F 8am-5pm, evenings, based on needs
Impact Description	Not Given
Cost Effectiveness Description	Not Given
Source(s) of Funding	DCF, CSC, Medicaid
Protective Factors built by the strategy	Parental Emotional Resilience, Social Connections, Knowledge of Parenting & Child Development, Concrete Support in Times of Need, Nurturing & Attachment
Eligibility Requirements	Not Given

<b>Agency Name</b>	<b>Helping People Succeed</b>
Program Name Target Audience	Healthy Families Families with newborn or pregnant
Program Description  Counties Served Frequency of Service Provision	Through intensive home visitation, services promote positive parent-child relationships, healthy child development, problem-solving skills, as well as linkages to health and other support services families may need. Martin County M-F 8am-5pm
Impact Description	Not Given
Cost Effectiveness Description	Not Given
Source(s) of Funding	Children's Services Council, United Way, United for Families, DCF and private donations
Protective Factors built by the strategy	Not Given
Eligibility Requirements	Not Given

## 6. Information and Referral Hotlines

<b>Agency Name</b>	
Program Name Target Audience	
Program Description Counties Served	

Frequency of Service Provision	
Impact Description	
Cost Effectiveness Description	
Source(s) of Funding Protective Factors built by the strategy	
Eligibility Requirements	

## 7. Public Awareness and Education Campaigns

<b>Agency Name</b>	<b>ALPI/Head Start</b>
Program Name Target Audience	Child Abuse Prevention Training/Awareness. General Public, Families with Special Needs and or at Risk
Program Description Counties Served Frequency of Service Provision	Child Abuse Prevention Training and Awareness. St. Lucie County M-F 8am-5 pm
Impact Description	Not Given
Cost Effectiveness Description	Not Given
Source(s) of Funding Protective Factors built by the strategy	Dept Health and Human Services, United Way Knowledge of Parenting and Child Development, Nurturing & Attachment
Protective Factors built by the strategy	Knowledge of Parenting and Child Development, Nurturing & Attachment
Eligibility Requirements	Not Given

<b>Agency Name</b>	<b>Martin County Health Department</b>
Program Name Target Audience	Health Start Case Coordination Families with Special Needs, Pregnant Women and Families, At Risk Families

Program Description	General media and education campaigns on Martin County Public Health Services.
Counties Served	Martin County
Frequency of Service Provision	M-F 8am-5pm
Impact Description	Not Given
Cost Effectiveness Description	Not Given
Source(s) of Funding	Head Start Coalition and State General Revenue.
Protective Factors built by the strategy	Not Given
Eligibility Requirements	Not Given

<b>Agency Name</b>	<b>CASTLE</b>
Program Name	Safe Families
Target Audience	At Risk Families
Program Description	The CASTLE has a media awareness campaign all year, and in particular during April which is child abuse prevention month. During April, the CASTLE has a memorial flag field that travels to all four counties. Each flag represents a child who has died in Florida due to abuse and neglect.
Counties Served	Not Given
Frequency of Service Provision	Not Given
Impact Description	98% of families do not abuse/re-abuse children for up to one year of enrollment.
Cost Effectiveness Description	Safe Families operates at a cost of \$3,000 per family per year. This is less than the average, per year cost of Healthy Families (a comparable home visiting program) which is \$3,348 according to the Healthy Families America web-site.
Source(s) of Funding	Children's Services Council, United Way, United for Families, DCF, and private donations.



Protective Factors built by the strategy	Not Given
	Not Given
Eligibility Requirements	Not Given
Agency Name	
Program Name Target Audience	Mental Health Crisis Evaluations School Age Children and their Families at School
Program Description  Counties Served Frequency of Service Provision	Education regarding family safety, legal rights and remedies involving victims of domestic violence and crimes, identifying and working with victims of human trafficking, rights and remedies available to abandoned, abused and neglected children in Florida. Okeechobee County As Needed
Impact Description	Not Given
Cost Effectiveness Description	Not Given
Source(s) of Funding	Okeechobee County School Board
Protective Factors built by the strategy	Social Connections, Knowledge of Parenting & Child Development, Concrete Support in Times of Need
Eligibility Requirements	School child and family

<b>Agency Name</b>	<b>Tykes and Teens</b>
Program Name Target Audience	Tykes & Teens At Risk Families
Program Description  Counties Served Frequency of Service Provision	Red Ribbon Week, Parents Who Host Lose the Most, Alcohol Awareness Month, Healthy Bodies, Healthy Minds, recent development of Prevention Department will expand our campaigns. Not Given Not Given
Impact Description	95% of families completing services have no verified abuse for one year after services
Cost Effectiveness Description	Not Given
Source(s) of Funding	Children's Services Council, United Way
Source(s) of Funding	Not Given

Protective Factors built by the strategy	
Eligibility Requirements	Not Given

<b>Agency Name</b>	<b>Deaf and Hard of Hearing Services of the Treasure Coast, Inc.</b>
Program Name Target Audience	Dangerous Decibels Program Children in Elementary Schools
Program Description  Counties Served Frequency of Service Provision	Educational Program in the 4 <sup>th</sup> Grade about protecting hearing. Martin, St. Lucie, Indian River, Okeechobee Counties M-F 8am-5pm
Impact Description	Not Given
Cost Effectiveness Description	Not Given
Source(s) of Funding	United Way, private donations, State phone on loan program revenues.
Protective Factors built by the strategy	Not Given
Eligibility Requirements	Not Given

<b>Agency Name</b>	<b>St. Lucie County Health Department</b>
Program Name Target Audience	Information/Education Programs General Public
Program Description  Counties Served Frequency of Service Provision	We provide “Hands are for Holding, Not Hitting” Posters in clinic with Hotline Number. St. Lucie County M-F 8am-5pm
Impact Description	66.8% - entry into care 1st trimester 94% infant survival rate.
Cost Effectiveness Description	Not Given
Source(s) of Funding	Federal Grants, State Dollars, County Dollars, Revenue generated by self.

Protective Factors built by the strategy	Concrete Support in Times of Need
Eligibility Requirements	Not Given

<b>Agency Name</b>	<b>Martin County Health Department</b>
Program Name	Pediatrics Program
Target Audience	Children and Families
Program Description	General Information and Services Provided
Counties Served	Martin County
Frequency of Service Provision	M-F 8am-5pm
Impact Description	Not Given
Cost Effectiveness Description	Not Given
Source(s) of Funding	Medicaid, State General Revenue
Protective Factors built by the strategy	Social Connections, Knowledge of Parenting & Child Development, Concrete Support in Times of Need
Eligibility Requirements	Income Guidelines, Sliding Scale Fees

## 8. Workforce

<b>Agency Name</b>	<b>Workforce Solutions</b>
Program Name	Workforce Investment Act Youth and Adult Program & Welfare Transition Programs.
Target Audience	Unemployed, dislocated workers, TANF/Food Stamp recipients, employed workers needing skill upgrades, low income individuals and low income youth with barriers to successful employment.
Program Description	employability skills workshops, career assessment and exploration, job search and job placement assistance, supportive services such as transportation, tools, uniforms, testing fees, to assist with employment goals.
Counties Served	Martin, St. Lucie, Indian River, Okeechobee Counties
Frequency of Service Provision	Daily
Impact Description	Persons served in these programs have been trained on

	risk/protective factors, developmental assets, and stranger danger awareness and practice techniques trained
Cost Effectiveness Description	In 2009 the services provided by Adult Day Training enable 10 families to have respite while their family member attended the Adult Day Training program. This enabled these family members to maintain meaningful employment rather than reliance on assistance from friends or babysitters
Source(s) of Funding	State
Protective Factors built by the strategy	Not Given
Eligibility Requirements	Adult Day Training provides services to persons aged 22 and older with developmental disabilities. Supported Employment provides services to people with disabilities identified

<b>Agency Name</b>	<b>Gulfstream Goodwill Industries</b>
Program Name	Rehabilitation Centers
Target Audience	Disabled
Program Description	Not Given
Counties Served	St. Lucie, Indian River Counties.
Frequency of Service Provision	Not Given
Impact Description	Nearly 20,000 jobseekers registered for our services, and 5,753 were placed into part-time and full-time jobs at an average wage rate of \$10.87 per hour.
Cost Effectiveness Description	Cost effectiveness if monitored by state and federal agencies. Workforce Solutions applied for competitive grants to leverage funds and increase services for the Treasure Coast. An additional \$645,000 was received as a result to provide unique projects serving two counties.
Source(s) of Funding	Federal Government, State Government, Community Foundation - supported by & operated for the benefit of a specific community or region.
Protective Factors built	Not Given

by the strategy	
Eligibility Requirements	Adult Day Training provides services to persons aged 22 and older with developmental disabilities. Supported Employment provides services to people with disabilities identified

**Attachment II**  
**Select Primary Programs Represented in Circuit 19 Continuum of Care**

PROGRAM NAME	ORGANIZATION	TARGET AUDIENCE	PROGRAM DESCRIPTION	COUNTIES SERVED
<b>Community Support for Families</b>				
<b>Family Resource Centers</b>				
Cummings Library - Palm City	MC Library System	Adults, young children, and families	Supply library materials in a variety of formats for all ages. Made available public computers with Internet, MS Office and other programs, electronic databases and educational games.	Martin County
Elisabeth Lahti Library - Indiantown	MC Library System	Adults, young children, and families	Supply library materials in a variety of formats for all ages. Made available public computers with Internet, MS Office and other programs, electronic databases and educational games.	Martin County
Hobe Sound Library - Hobe Sound	MC Library System	Adults, young children, and families	Supply library materials in a variety of formats for all ages. Made available public computers with Internet, MS Office and other programs, electronic databases and educational games.	Martin County
Hoke Library - Jensen Beach	MC Library System	Adults, young children, and families	Supply library materials in a variety of formats for all ages. Made available public computers with Internet, MS Office and other programs, electronic databases and educational games.	Martin County
Blake Library - Stuart	MC Library System	Adults, young children, and families	Supply library materials in a variety of formats for all ages. Made available public computers with Internet, MS Office and other programs, electronic databases and educational games.	Martin County
Indian River County Main Library	IRC Library System	Adults, young children, and families	Supply library materials in a variety of formats for all ages. Made available public computers with Internet, MS Office and other programs, electronic databases and educational games.	Indian River County
North Indian River County Library	IRC Library System	Adults, young children, and families	Supply library materials in a variety of formats for all ages. Made available public computers with Internet, MS Office and other programs, electronic databases and educational games.	Indian River County
Indian River State College Library	Indian River State College	Adults, young children, and families	Supply library materials in a variety of formats for all ages. Made available public computers with Internet, MS Office and other programs, electronic databases and educational games.	Indian River County
Okeechobee County Public Library	Okeechobee County Library System	Adults, young children, and families	Supply library materials in a variety of formats for all ages. Made available public computers with Internet, MS Office and other programs, electronic databases and educational games.	Okeechobee County
Robert Morgade - Salerno	MC Library System	Adults, young children, and families	Supply library materials in a variety of formats for all ages. Made available public computers with Internet, MS Office and other programs, electronic databases and educational games.	Martin County
Library	Saint Lucie County Library System	Adults, young children, and families	Supply library materials in a variety of formats for all ages. Made available public computers with Internet, MS Office and other programs, electronic databases and educational games.	St. Lucie County
Building Bridges to Youth	Building Bridges to Youth, Inc.	General Public, at risk families	The mission of the Building Bridges Initiative is to identify and promote practice and policy initiatives that will create strong and closely coordinated partnerships and collaborations between families, youth, community- and residentially-based treatment and service providers, advocates and policymakers to ensure that comprehensive services and supports are family-driven, youth-guided, strength-based, culturally and linguistically competent, individualized, evidence and practice-informed, and consistent with the research on sustained positive outcomes.	Martin County
Christians Reaching Out to Society	Indiantown Outreach Center	general public, at risk families	To enable people of all faiths to work together to work together to identify unmet needs of the community, and to collaborate with community groups in creating solutions to meet those unmet needs.	Martin County
Future Generations	Future Generations	Not Given	Not-for-profit company that creates an early learning classical music education for young audiences based on the Mozart Effect through seminars, lectures and recitals to promote the enjoyment of classical music and the science and geographical origins of	Not Given
CareNet Pregnancy Centers of Indian River County CareNet Pregnancy Centers of the Treasure Coast Pregnancy Care Center of Fort Pierce	CareNet Pregnancy Centers	General Public, Teens	Pregnancy and Counseling Services	Not Given
Hibiscus Children's Center	Hibiscus Children's Center	Children between the ages of 0-18 years and their families living in the counties of Martin, St. Lucie, Indian River and Okeechobee of Florida.	The Hibiscus Mental Health Program provides outpatient mental health services to children 0-18 and their families including psychiatric services, specialized	Martin, St. Lucie, Indian River, Okeechobee Counties
La Promesa of Martin County La Promesa of Saint Lucie County Planned Parenthood of Martin County Planned Parenthood of Saint Lucie County	Planned Parenthood of South Florida and the Treasure Coast		Our mission is to ensure broad, public access to quality reproductive healthcare through direct service, education, and advocacy. Our efforts focus on medical services, educational programs, community outreach, and public affairs.	Not Given
Project R.O.C.K. Fort Pierce Project R.O.C.K. Port Saint Lucie	Project R.O.C.K. (reaching our community kids)	open to students who are suspended from school	Project "R.O.C.K.", a program supported by community leaders and funded by the Children Services Council of St. Lucie County, provides a safe, nurturing and spiritual environment for youth who have been suspended from school. Project "R.O.C.K." crosses denominational, cultural and racial lines to make a significant difference in the lives of youth through supervision, mentoring, academic tutoring and counseling.	Not Given

**Attachment II**  
**Select Primary Programs Represented in Circuit 19 Continuum of Care**

PROGRAM NAME	ORGANIZATION	TARGET AUDIENCE	PROGRAM DESCRIPTION	COUNTIES SERVED
Dasie Bridgewater Hope Center, Inc.	Dasie Bridgewater Hope Center, Inc.		The primary goal of the Dasie Bridgewater Hope Center is to empower the students it serves to be self-confident, responsible and well-rounded individuals in a safe and nurturing environment. It is the vision of the Dasie Bridgewater Hope Center to remove barriers so the children can concentrate on learning and achieving their full potential by providing programming that reinforces classroom curriculum as well as encourages creative and critical thinking.	Not Given
Florida Immigrant Advocacy Center	Florida Immigrant Advocacy Center	immigrant children and their families/caretakers	Education regarding family safety, legal rights and remedies involving victims of domestic violence and crimes, identifying & working with victims of human trafficking, rights and remedies available to abandoned, abused & neglected children in Florida.	Martin, St. Lucie, Okeechobee, Indian River Counties
<b>Community Events</b>				
Parks and Rec's	Okeechobee County	Open to the general public	Not Given	Not Given
Save Our Children	Save Our Children Tutorial, Cultural and Recreation Center	Not Given	Not Given	Not Given
Vero Beach Museum of Art	The Arts Council, Inc.	Not Given	Not Given	Not Given
Parks and Rec's	City of Stuart	Open to the general public	The Martin County Parks and Recreation Department is composed of five Divisions. Citizens are able to receive information about programs for children, seniors, athletic leagues, reserve a picnic site for events and discuss future park development in one department.	Not Given
<b>Family Supportive Programs/Services</b>				
Food Bank, Housing Opportunities, Ryan White Transportation and Project Aids	Project Response	HIV/Aids Patients	Area 15 - Food Voucher Service to HIV+ agency clients only/Area 7 - Food Pantry with food access 2 x mthly to HIV+ agency clients only.Emergency housing assistance for those with HIV/AIDS,Transportation Services to Ryan White Part B HIV+ clients. Transportation to Medical Care and other social service needs. Services are provided on an pre-approval basis and are limited in availability.	Brevard Indian River Martin Okeechobee St. Lucie
Prevention and Education	Epilepsy Foundation of Florida	Families with Epilepsy	EPOF offers comprehensive prevention and education services to community services. We also make regular presentations to public schools (both to personnel and students), physicians, attorneys, and other community professionals; police, emergency medical services personnel, healthcare professionals, health and social service agencies and other community based orgs; and child care providers. "	Alachua Baker Bradford Broward Citrus Clay Columbia Dixie Duval Flagler Gilchrist Hamilton Hernando Indian River Lafayette Levy Marion Martin Miami-Dade Monroe Nassau Okeechobee Palm Beach Putnam St. Lucie
Supporting Families in Crisis		at risk families	Provides In-home Services to families experiencing crisis	Martin, St. Lucie Indian River, Okeechobee Counties
Pre Natal Health	Martin Co. Health Dept, St. Lucie Co. Health Dept.	Pregnant women and teens.	Not Given	Martin, St. Lucie
Pediatrics Program	Martin Co. Health Dept.	Children and Families/Income Guidelines	We provide the "Hands are for holding not hitting" posters in clinic	Martin County
<b>Voluntary Home Visiting</b>				
Father and Child Connection/ Resource Center	Father and Child Resource Ctr.	No restrictions	Assist fathers fulfill their responsibilities: physical, emotional, financial and moral to their children.	St. Lucie County
Strong Fathers/Strong Families	CASTLE	Incarcerated fathers recently released	This program strives to reunify incarcerated fathers with their families after release.	Not Given
Baby Steps B.R.A.I.N	Helping People Succeed	Martin & St. Lucie County families who have a newborn.	B.R.A.I.N. (Building Readiness Among Infants Now) provides educational home visits and developmental monitoring to all families with newborns.	Martin, St. Lucie Counties
Healthy Start Program	Indian River County Health Department	general public, at risk families	Provides information and referral, comprehensive assessment of service needs in light of family and community resources, ongoing care coordination and support to assure access to needed services, psychosocial, nutritional and smoking cessation counseling, childbirth, breastfeeding and parenting support and education as well as home visiting.	Indian River County
Healthy Start Coalition, Inc.	Indian River County Healthy Start Coalition, Inc.	general public, at risk families	Provides information and referral, comprehensive assessment of service needs in light of family and community resources, ongoing care coordination and support to assure access to needed services, psychosocial, nutritional and smoking cessation counseling, childbirth, breastfeeding and parenting support and education as well as home visiting.	Indian River County
Baby Steps Early Intervention	Helping People Succeed	Open to families with children 0-3 who have developmental delays, risk factors, or who are typically developing.	Educational home visits for families with children experiencing developmental delays or who are at risk of delay.	Not Given
Baby Steps Infant Massage Instruction	Helping People Succeed	Open to families with infants under 4 months of age.	Communicate your love through touch. Learn to your baby from one-on-one instruction from Certified Infant Massage Instructors.	Not Given
Children's Behavioral Support (CBS)	Helping People Succeed	Martin Cnty residents ages 2-5 enrolled in a licensed childcare or Martin Cnty Headstart program.	Provides a behavioral specialist & a social worker to work with the child at home & in their childcare program to assist families & childcare staff in understanding & managing the child.	Maartin County
Interconception Education & Counseling	Healthy Start	Mothers between pregnancies	Provide mothers with education & information for the best health between pregnancies.	Not Given
Mom Care	Healthy Start	Pregnant women and teens.	Medicaid Health Insurance for pregnant women which ensures that women access care during pregnancy.	Not Given
Healthy Families	Helping People Succeed	General Public, at risk families	are experiencing stressful life situations. Through intensive home visitation, services promote positive parent-child relationships, healthy child development, problem-solving skills, as well as linkages to health and other support services families may need.	Not Given
Safe Families	CASTLE	General Public, Families with Special needs and at risk families	Professional staff goes into homes to provide parent education and supportive counseling to families at risk of abusing or neglecting their children.	Not Given

**Attachment II**  
**Select Primary Programs Represented in Circuit 19 Continuum of Care**

PROGRAM NAME	ORGANIZATION	TARGET AUDIENCE	PROGRAM DESCRIPTION	COUNTIES SERVED
<b>Developmental Screening</b>				
Treasure Coast Early Steps/Vocational Services	Easter Seals	Infants and toddler's birth to age 3 and their families.	Program services are provided for families with children who are developmentally at risk or are demonstrating developmental delays.	Brevard, Indian River
Exceptional Student Education Program	MC School Board	School age children enrolled in public school	Specialized instruction and related services may be available to school aged children who meet state and federal guidelines under the Individual's with Disabilities Education Act (IDEA).	Not Given
Center for Speech and Language	Center for Speech and Language	Not Given	Provides home and center based speech, language and swallowing therapy.	Not Given
FL Elks Children's Therapy	FL Elks	Children 0 to 18 years old who do not have access to therapy services	Provides free in-home physical and occupational therapy. Developmental Screening, Speech & Language Evaluation and Other Therapies	Not Given
FDLERS	FDLERS	Martin County resident, child 3-5 years of age	A Child Find Consultant provides screenings measuring a child's development in the areas of speech, language, cognitive, motor, auditory and visual acuity.	Not Given
<b>Accessible Quality Childcare</b>				
Child Care Resource and Referral	ELC Martin, Okeechobee Indian River	Families who are in need of child care.	ELC helps families find child care within the tri-county area. ELC is responsible for overseeing all licensed child care centers in/or family child care homes	Martin, Okeechobee, Indian River Counties
Child Care Resource and Referral	ELC of Saint Lucie County	Families who are in need of child care.	ELC helps families find child care within the tri-county area. ELC is responsible for overseeing all licensed child care centers in/or family child care homes	St. Lucie County
Gertrude Walden Child Care Center	Gertrude Walden Child Care Center	Not Given	Not Given	St. Lucie County
Childcare Resources of Indian River, Inc.	Childcare Resources of Indian River, Inc.	Families living in Indian River County, parents working or going to school full time and families who meet the income eligibility guidelines.	Provides tuition assistance for quality early care and preschool, support and guidance to maintain family stability, access to mental health professionals at a greatly reduced fee and offers a wide variety of parenting programs and family enrichment opportunities.	Indian River County
East Coast Migrant Head Start Project	East Coast Migrant Head Start Project (Fort Pierce, Indiantown, Okeechobee I, Okeechobee II)	Migrant Families	establishes, provides and promotes continuity of Head Start services to migrant children and their families along the East Coast of the United States. Through enabling children to develop their full potential, parents are challenged to become more self-actualized by being involved with their own child's development and in decision making structures throughout ECMHSP. Ongoing program and fiscal monitoring and training and technical assistance assure the continual growth of quality child development services at the center level and the promotion of staff development activities on a regular basis.	Martin, St. Lucie, Okeechobee Counties
Dunbar Childcare Center	Dunbar Childcare Center	Not Given	Not Given	Not Given
Subsidized child care and pre-school services	Giving Rewarding Opportunities to Work, Inc.	Not Given	Not Given	Not Given
RCMA Fellsmere Child Development Center RCMA Indian River Robert Covill CDC RCMA Whispering Pines CDC	Redlands Christian Migrant Association	low income families	quality child care and early education for children of migrant farm workers and rural	Not Given
Subsidized Child Care	ELC Martin, Okeechobee Indian River	Working families whose income does not exceed 200% of the federal poverty guidelines	Child Care	Martin, Okeechobee, Indian River Counties
Voluntary Pre Kindergarten	ELC St. Lucie Co.	All 4 year olds on or before Sept. 1st.	Not Given	St. Lucie
School Readiness Program	ELC St. Lucie Co.	Protective Services birth-13, Cash assistance ages birth-13	Child care services	St. Lucie



**Attachment II**  
**Select Primary Programs Represented in Circuit 19 Continuum of Care**

PROGRAM NAME	ORGANIZATION	TARGET AUDIENCE	PROGRAM DESCRIPTION	COUNTIES SERVED
<b>Before and After School Programs</b>				
Boys and Girls Clubs of Martin County	Boys and Girls Clubs	6-18 years of age	Provides educational, cultural, leadership, recreational and athletic activities to youth when they are not in school	Martin County
Boys and Girls Clubs of Saint Lucie County	Boys and Girls Clubs	6-18 years of age	Provides educational, cultural, leadership, recreational and athletic activities to youth when they are not in school	St. Lucie County
Boys and Girls Club of Indian River County	Boys and Girls Clubs	6-18 years of age	Provides educational, cultural, leadership, recreational and athletic activities to youth when they are not in school	Indian River County
Extended Day Program	Martin County School	Elementary school aged children	The Extended Day program provides a structured, fun, learning environment for students who need supervision after school	Martin County
After School Program of Middle School and HS	ARC	Middle school & high school aged children	Students participate in recreational activities, do volunteer work, learn computer skills, practice daily living skills and enjoy outings with their peers.	Martin County
Holiday Camp	Saint Lucie County	Not Given	Not Given	St. Lucie County
After School Program	YMCA of Saint Lucie County	children 6-10 years of age	Afterschool care for children. Includes indoor/outdoor games, team sports, arts and crafts, skating, gymnastic activity, homework help and snack time.	St. Lucie County
4H Youth Development	UF Cooperative Extension - Indian River County	Not Given	Not Given	Indian River County
BLAST Program	MC Park and Rec's	Not Given	Affordable after school/out of school care during regular school days, non school days and early release days. Homework help is provided. Indoor/outdoor activities occur daily.	Martin County
World Class Boxing Club	World Class Boxing Club	Not Given	Not Given	
East Stuart Youth Initiative	City of Stuart	Child must be at least 6 years of age	Provides recreational, educational, counseling and tutorial services to the participants of the program. The program focuses on After School Services and Summer Camp	Martin County
Golden Gate Alternative After School Program	MC Park and Rec's	For children 5 years old in kindergarten and up.	Affordable after school/out of school care during regular school days, non school days and early release days. Homework help is provided. Indoor/outdoor activities occur daily	
Gifford Youth Activity Center, Inc.	Beyond Special K after school program	Not Given	Not Given	Indian River County
Summer Camp Program	The ARC of Saint Lucie County, Inc.	Not Given	Not Given	St. Lucie County
Camp Holiday CATCH After Care Program	The Daniel M. Foundation, Inc.	Not Given	This program is designed to provide an enriching after-school program for children that have a diagnoses of ADHD, ADD, Depression, Bi-Polar Disorder and other debilitating mental health disorders.	St. Lucie County
Youth Guidance Mentoring and Activities Program	Youth Guidance Mentoring and Activities Program	Single Parent Children, at risk	One on One Match with mentor, group activities for children who are not yet matched.	Indian River County
Summer Camp Program	City of Fort Pierce, Police Athletic League	Not Given	Not Given	St. Lucie County
Life for Youth Camp	Life for Youth Camp	children ages 5-16	Life for Youth Camp is a non-denominational Christian camp, with the purpose of spreading the Gospel of Jesus Christ to all who attend	Indian River County
Spirited Girls Class	PACE Center for Girls	girls ages 12-17	Not Given	St. Lucie County
Jensen After School Experience	MC Park and Rec's	Not Given	Affordable after school/out of school care during regular school days, non school days and early release days. Homework help is provided. Indoor/outdoor activities occur daily.	Martin County

**Attachment II**  
**Select Primary Programs Represented in Circuit 19 Continuum of Care**

PROGRAM NAME	ORGANIZATION	TARGET AUDIENCE	PROGRAM DESCRIPTION	COUNTIES SERVED
<b>Recreational Activities</b>				
Youth Sports	YMCA	All children 6-18 years	Youth sports offers exercise, skills and fun for children: Soccer, basketball, volleyball, flag football, gymnastics, roller skating, hockey, cheerleading and swimming.	Not Given
Faith Weavers	Covenant Fellowship	All children age 3rd through 5th grade.	Based on a small-group model, Faith Weaver Friends is a very effective way to build lasting, meaningful relationships between kids, adults and God.	Not Given
Dance Classes	FL Arts & Dance Company	general public	Non profit dance studio in Martin County, with the low rates . Ballet, tap, jazz, Irish step, tumbling, lyrical, hip-hop, and modern dance classes. Scholarships available.	Martin County
Music Education Seminar	Music Education Seminar	general public	Not-for-profit company that creates an early learning classical music education for young audiences based on the Mozart Effect through seminars, lectures and recitals to promote the enjoyment of classical music and the science and geographical origins of music.	Not Given
Children's Museum of the Treasure Coast	Children's Museum of the TC	general public	The Children's Museum of the Treasure Coast offers children and families a place to explore and learn through hands-on activities, educational programs and cultural experiences.	Martin, St. Lucie, Indian River, Okeechobee Counties
Bible Summer Camps	Different Churches in MC	general public	Summer camp , Christ-centered lessons.	Martin County
Summer Camps	Different Organizations	For elementary and middle school age children.	Various day camps, activities include, arts & crafts, games, weekly field trips, swimming, sports, character value development, themed camps.	Martin, St. Lucie, Indian River, Okeechobee Counties
<b>Parent Education Classes</b>				
Parenting	Care Net	For moms & dads and parents-to-be	Provide a variety of free services and programs to meet the needs of clients and of the community.	Not Given
Baby Steps Music and Development	Helping People Succeed	Parents with children under 5 years of age	Baby Steps Music and Movement aims at enhancing parent-child interaction and promoting the healthy growth and development of children under three.	Not Given
Parenting	CASTLE	For moms & dads and parents-to-be	for parents who want to learn new parenting skills, and improve their ability to raise and discipline their children in a healthy positive manner.	Not Given
Strong Fathers/Strong Families	CASTLE	Incarcerated fathers participate	Program is designed to promote responsible fatherhood in incarcerated fathers, and responsible parenting in at-risk families. There is no cost to the family.	Not Given
Valued Visits	CASTLE	Individuals who are under a court-mandated visitation schedule	Supervised visitation program that offers a safe recreational setting for children and non-residential parents to rebuild relationships.	Not Given
<b>Marriage &amp; Relationship Counseling &amp; Support Servs</b>				
Innovative Treatment Services	Innovative Treatment Services	general public	provides mental health and substance abuse counseling	Not Given
Grief Counseling	Treasure Coast Hospice	General public	Not Given	Martin, St. Lucie, Okeechobee Counties

**Attachment II**  
**Select Primary Programs Represented in Circuit 19 Continuum of Care**

PROGRAM NAME	ORGANIZATION	TARGET AUDIENCE	PROGRAM DESCRIPTION	COUNTIES SERVED
<b>Public Awareness and Education Campaigns</b>				
	Mental Health Crisis Evaluations	School age children and their families	None - references come from school board employees	Not Given
	Florida Immigrant Advocacy Center	Families with special needs, at-risk families, immigrant children and their families/caretakers	Education regarding family safety, legal rights and remedies involving victims of domestic violence and crimes, identifying & working with victims of human trafficking, rights and remedies available to abandoned, abused & neglected children in Florida.	Not Given
	Martin County Health Department, Pediatrics Program	Children and families who meet income guidelines	General Information on services provided	Martin County
	Saint Lucie County Health Department	General Public	We provide the "hand are for holding not hitting" posters in our clinic with hotline phone number.	St. Lucie County
	ALPI Head Start/Early Head Start	General public, families with special needs and at-risk families	Child Abuse prevention training/awareness	St. Lucie County
	Martin County Health Department - Healthy Start Case Coordination	families with special needs, at-risk families, pregnant women and their families	General media and education campaigns on Martin County Health Department programs.	Martin County
	Building Bridges to Youth, Inc.	general public, families with special needs, at-risk families and senior citizens	Substance Abuse Awareness(Red Ribbon Month), Reducing Hunger, school dropout and building relationships between youth and seniors	Martin County
	Catholic Charities	general public, families with special needs, at-risk families, mental health and chemical dependency	We send out mailings of services.	Not Given
	Tykes and Teens	General Public	Red Ribbon Week, Parents Who Host Lose the Most, Alcohol Awareness Month, Healthy Bodies, Healthy Minds, recent development of Prevention Department will expand our campaigns.	Not Given
	Youth Guidance Mentoring and Activities Program	At-risk families	Quarterly parenting workshops open to the entire community.	Indian River County
	Supporting Families in Crisis	At-risk families	Child Abuse Prevention	Not Given
	Deaf and Hard of Hearing Services of the Treasure Coast, Inc.	Families with special needs	Dangerous Decibels program is taught to 4th graders. Deals with protecting their hearing.	Martin, St. Lucie, Okeechobee, Indian River Counties
	Safe Families	at risk families	The CASTLE has a media awareness campaign all year, and in particular during April which is child abuse prevention month. During April, the CASTLE has a memorial flag field that travels to all four counties. Each flag represents a child who has died in Florida due to abuse and neglect.	Not Given
	Treasure Coast Hospice	General public	Monthly grief workshops, service of remembrance, camp good grief, crisis intervention, educational programs when requested by outside agencies or schools	Not Given
	Voluntary Pre-Kindergarten	all 4 year olds on or before September 1st	Public Service Announcements via radio, community television, billboards, shopping cart advertisements, and newspapers.Management team has visited local businesses to promote availability of services. Agency sponsored Family Fun Fair. Agency also participated in various public events through the year.	Not Given
	Suncoast Mental Health	children	Children's Mental Health Awareness	Not Given
	School Readiness Program	Child care services are provided to parents based upon funding categories - protective services - ages birth -13, cash assistance ages birth - 13, transitional birth-13, income eligible birth - kindergarten entry.	Public Service Announcements via radio, community television, billboards, shopping cart advertisements, and newspapers.Management team has visited local businesses to promote availability of services. Agency sponsored Family Fun Fair. Agency also participated in various public events through the year.	Not Given
Exceptional Student Education Program	Okeechobee County School Board	Not Given	Not Given	Not Given
	Big Brothers, Big Sisters of Saint Lucie County	Not Given	Not Given	Not Given
Tuency Program	Boys and Girls Club of Saint Lucie County	children who are enrolled in school and have five or more un-excused absences	Not Given	Not Given
Bureau of Prevention and Victim Services	Florida Department of Juvenile Justice	at risk families	Not Given	Martin, St. Lucie, Indian River, Okeechobee Counties

**Attachment II**  
**Select Primary Programs Represented in Circuit 19 Continuum of Care**

PROGRAM NAME	ORGANIZATION	TARGET AUDIENCE	PROGRAM DESCRIPTION	COUNTIES SERVED
	Frontline for Kids	Teens	Not Given	St. Lucie County
	Childcare Resources of Indian River, Inc.	General Public	Not Given	Indian River County
Stuart Police Community Services Team	City of Stuart	At Risk families	Not Given	Martin County
Centralized Intake, Teen Hotline	Children's Home Society of Florida	Teens	Not Given	Martin, St. Lucie, Indian River, Okeechobee Counties
	The Student Assistance Program	At-risk families, at-risk students in school	Children's Mental Health Summit, Substance Abuse Prevention information during the Red Ribbon Week activities in all of our schools	Martin, St. Lucie, Indian River, Okeechobee Counties
	Florida Immigrant Advocacy Center	at risk families, Immigrant children and their families/caretakers	Outreach education and special events available	St. Lucie - Ft. Pierce specific
<b>Community Development</b>				
	Children's Services Council of Martin County	general public, at risk families	Not Given	Not Given
	Children's Services Council of Okeechobee County	general public, at risk families	Not Given	Not Given
	Children's Services Council of Saint Lucie County	general public, at risk families	Not Given	Not Given
	Executive Roundtable of Saint Lucie County	general public, at risk families	Not Given	Not Given
	Hope Rural School		Not Given	Not Given
	Audubon Society of Martin County	general public	Conservation projects and presentations about birds	Not Given
<b>Workforce</b>				
Florida DOE Vocational Rehabilitation PSL Florida DOE Vocational Rehabilitation Fort Pierce Florida DOE Vocational Rehabilitation Okeechobee Florida DOE Vocational Rehabilitation Stuart Florida DOE Vocational Rehabilitation Vero Beach	Florida Division Vocational Rehabilitation	Disabled	Not Given	Martin, St. Lucie, Indian River, Okeechobee Counties
Rehabilitation Center (Fort Pierce) Rehabilitation Center (Fort Saint Lucie) Rehabilitation Center (Vero Beach)	Gulfstream Goodwill Industries	Disabled	Not Given	St. Lucie, Indian River Counties
	Indian River State College	General Public	Not Given	Martin, St. Lucie, Indian River, Okeechobee Counties
Workforce Investment Act Youth and Adult Program & Welfare Transition Programs	Workforce Solutions	Unemployed, dislocated workers, TANF/Food Stamp recipients, employed workers needing skill upgrades, low income individuals and low income youth with barriers to successful employment.	employability skills workshops, career assessment and exploration, job search and job placement assistance, supportive services such as transportation, tools, uniforms, testing fees, to assist with employment goals."	Martin, St. Lucie, Indian River, Okeechobee Counties
Career Development Program Farmworkers Education and Program Tech Prep/School to Work	Children's Home Society of Florida	Teens	Not Given	Martin, St. Lucie, Indian River, Okeechobee Counties
Adult Day Training Program ABLE Summer Camp & After School Programs; Supported Employment	ARC Martin County	Not Given	Adult Day Training Program, ABLE Summer Camp and After School Programs, and Supported Employment Program all teach risk-protective factors, developmental assets, and stranger danger awareness both formally and informally to disabled persons served in the programs. The ABLE Summer Camp and After School Program provides intensive intervention for children between the ages of 6 and 21 with developmental disabilities who are unable to stay at home and who cannot participate in other available programs due to unique behavioral, social, and healthcare needs. The programs stress risk-protective factors, developmental assets, and stranger danger awareness both formally and informally as the young persons served are vulnerable.	Martin County
<b>Information and Referral</b>				
Teen Hotline	Deaf and Hard of Hearing Services, Treasure Coast	Families with special needs	Not Given	Martin, St. Lucie, Indian River, Okeechobee Counties
CrisisLine of the Treasure Coast	Mental Health Association of Indian River County, Inc.	general public	Not Given	Martin, St. Lucie, Indian River, Okeechobee Counties
Deaf and Hard of Hearing Services, Treasure Coast	School Board of Saint Lucie County	General Public	Not Given	St. Lucie County
Crisis Line	Crisis Line of the Treasure Coast	general public	Not Given	Martin, St. Lucie, Indian River, Okeechobee Counties