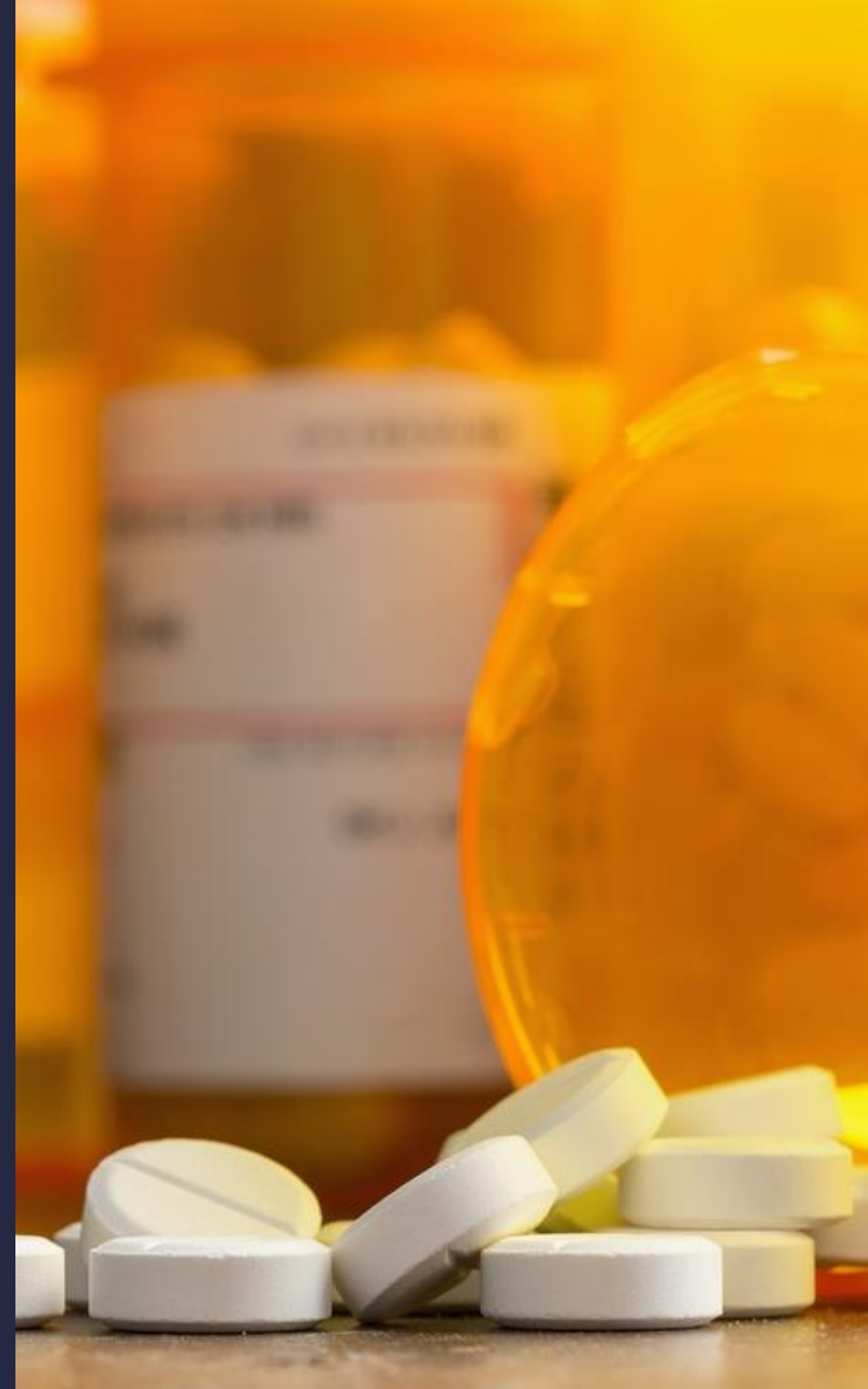


Community Response Addressing The Opioid Crisis

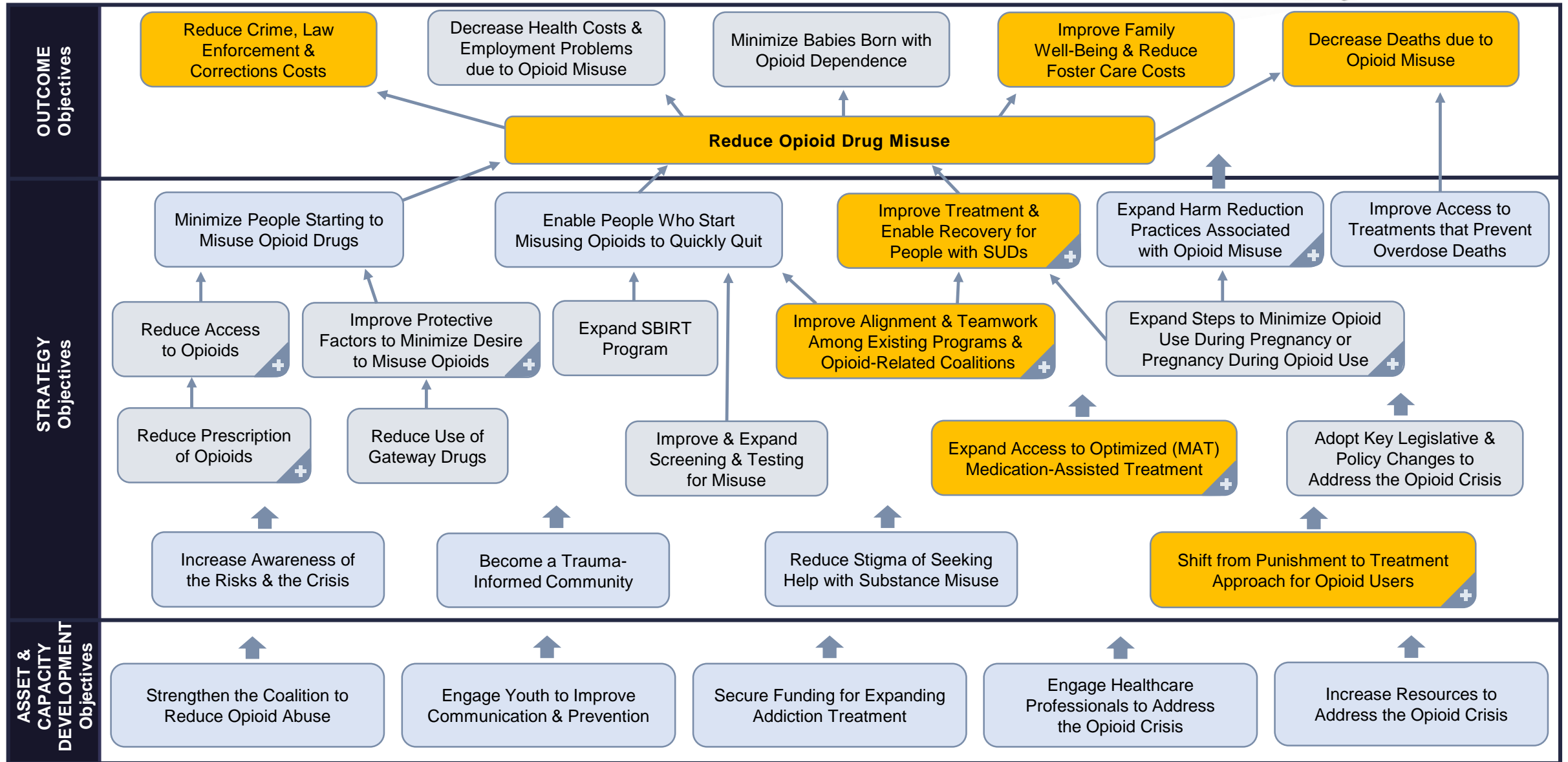
Leon, Wakulla, Gadsden, Franklin, Liberty,
Jefferson, Madison and Taylor Counties



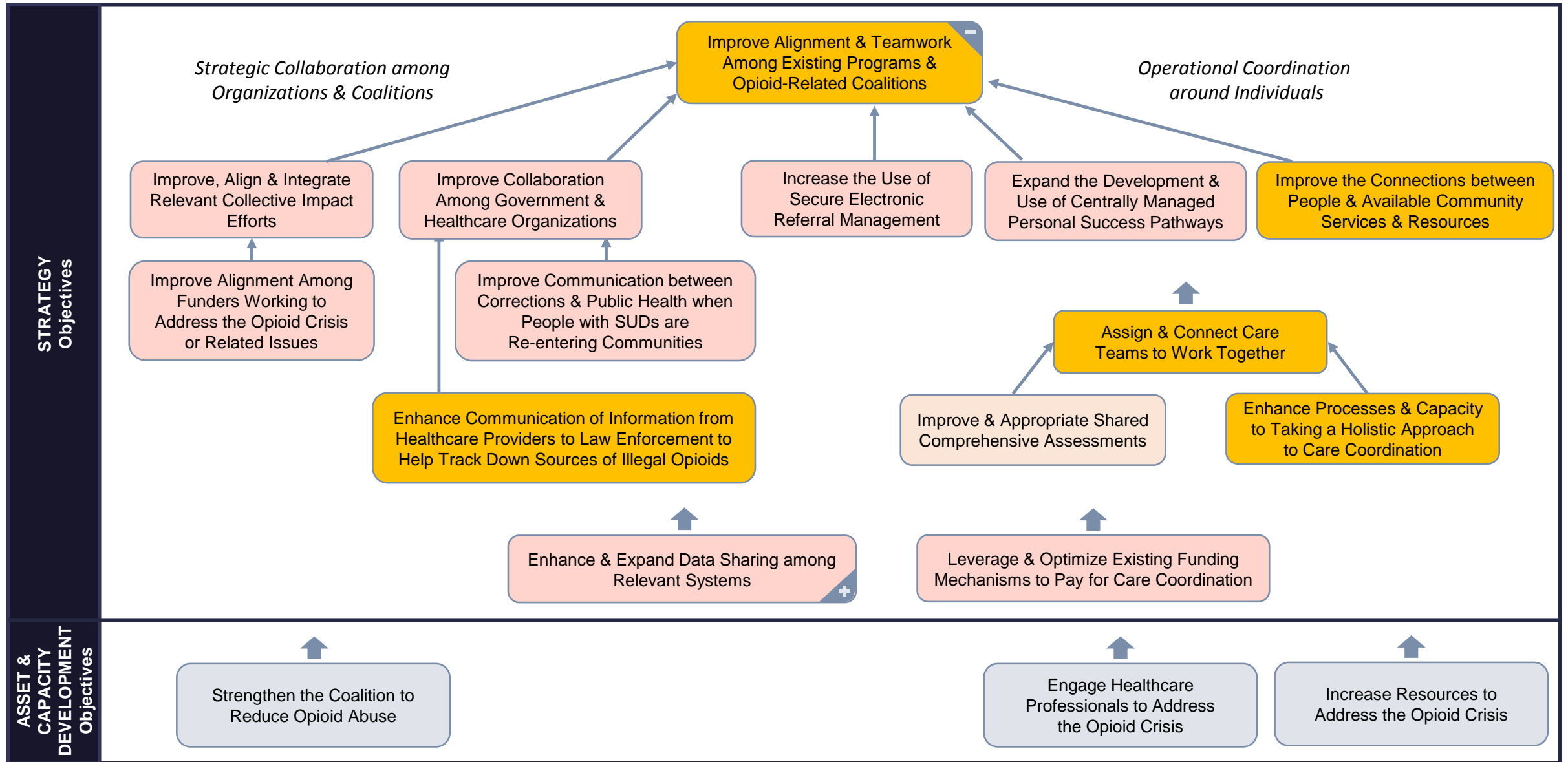
Strong Partnerships = Health Communities

- Creating **strong communities armed with appropriate resources** ensures an effective response to crisis.
- **Big Bend Community Based Care (BBCBC)** is helping to provide an **infrastructure** including many community partners and individuals such as law enforcement, clinicians, service agencies, non-profit groups, faith based organizations, schools and civic groups, peers and those with history of drug misuse to **effectively address substance misuse from a variety of perspectives**.
- Through community **dialog, data** driven decision making and specific **strategies aimed at preventing the use of opioids and reduction of current misuse** we can prevent the severe impact of opioids as seen in other communities in Florida.

COMPREHENSIVE STRATEGY to address Opioid + Heroin Abuse



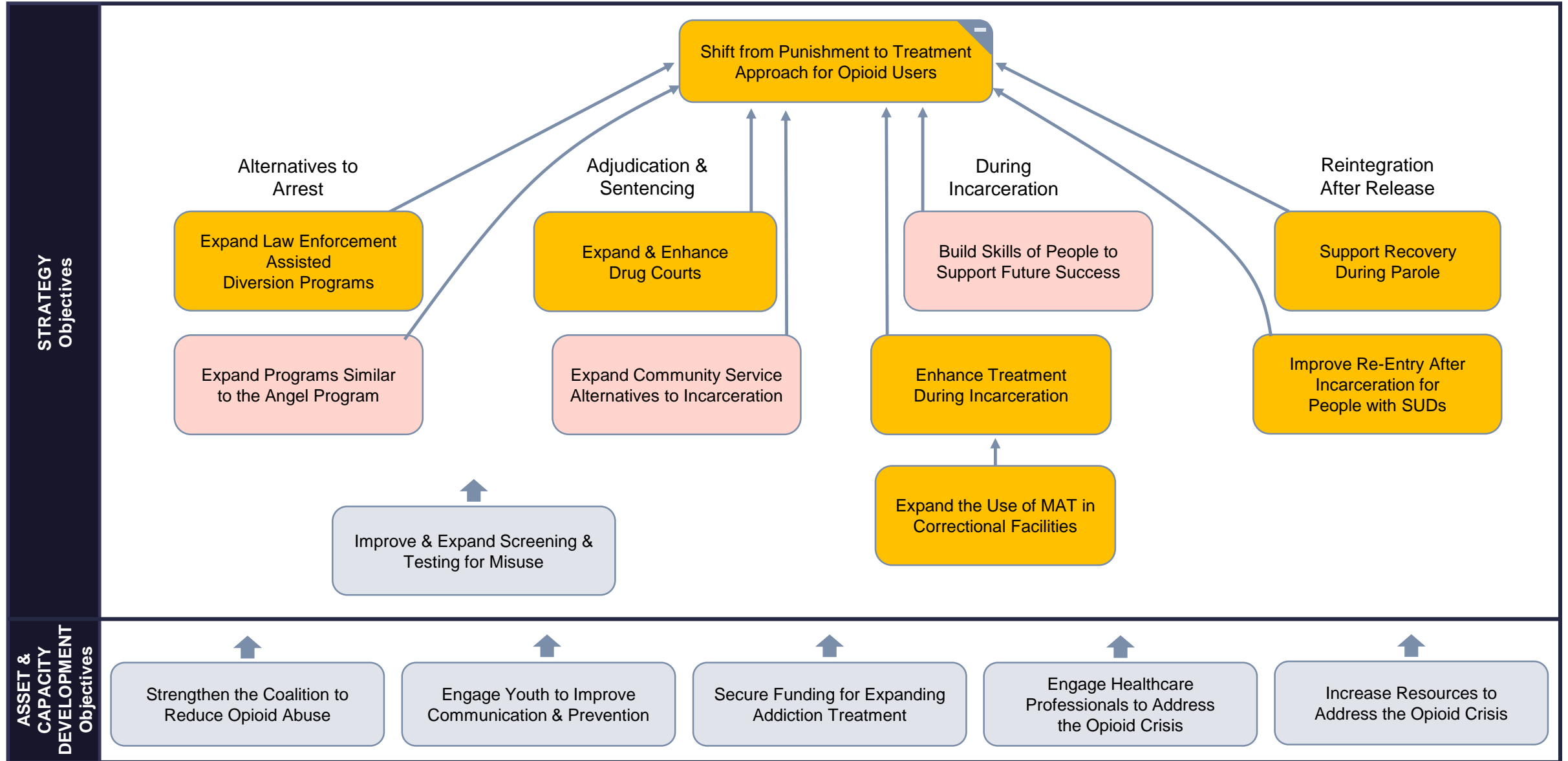
STRATEGY to improve alignment & teamwork



Collaboration with Jails and Law Enforcement

- Currently we are working with each of the 8 county jails in Circuits 2 & 3 to better collaborate and serve those identified through the criminal justice system as needing services and treatment for substance misuse.
- Among the Sheriff's and Jails we are working with, **Wakulla, Leon, Gadsden, Liberty and Taylor county have shared interest in implementing Vivitrol** within the jail when necessary to address opioid and alcohol abuse and addiction.
- BBCBC is also working on **data sharing with the Jails to better coordinate care** for someone while they are incarcerated and continue services as part of their aftercare plan.

STRATEGY to shift from punishment to treatment approach for opioid users



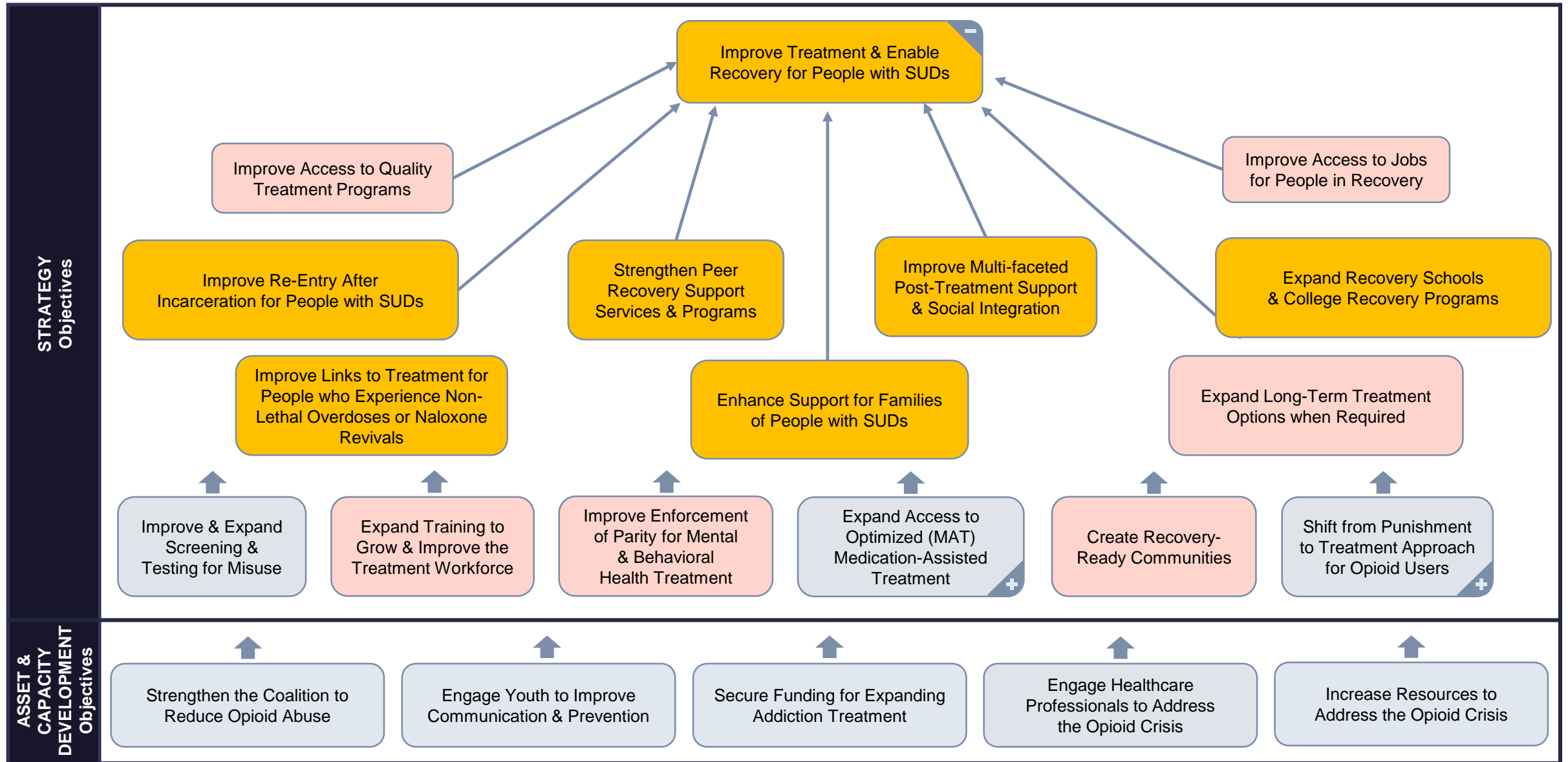
Law Enforcement and Court System Collaboration

- There are several opportunities to engage a person with opioid use during judicial process. Currently BBCBC is working with **court process, judges, law enforcement, correctional facilities and the community to help connect opioid users to services and treatment** as soon as there is an indication of a substance use issue hopefully **diverting them from the criminal justice system altogether and setting them on a path to recovery.**
- Current **Drug Court Programs** are tightening up on policy and process in order to prepare to serve more people with the same funds due to the increase in need. **Better collaboration and partnerships with community organizations and natural support systems are being integrating into the regular staffings during Drug Court staffings to better promote recovery and success in the community.** Drug Court Programs can help a person avoid future arrests and felony charges by pairing the person in need with treatment, probation, monitoring and other supports upon their first misdemeanor related to drugs.
- In Circuit 2, DISC Village goes into county jails when possible to **provide assessments and counsel on treatment options for inmates.** They also can assist the jail in providing **MAT (Medication Assisted Treatment)** when necessary. Currently, Liberty and Wakulla county jails are looking to offer MAT.

Law Enforcement and Court System Collaboration Continued...

- **ROSC (Recovery Oriented System of Care)** is a coordinated network of community-based services and supports that is person-centered and builds on the strengths and resilience of individuals, families, and communities to achieve abstinence and improved health, wellness, and quality of life for those with or at risk of alcohol and drug problems. By involving community members including faith based groups, returning to the community sober is much better supported and the likelihood of ongoing recovery is much greater by focusing on a persons natural supports.
- More effort is being directed towards **release planning and re-entry efforts** to better support those returning to the community with substance use issues. Open communications between Leon, Wakulla, Franklin, Gadsden and Liberty county jails helps connect inmates to providers and community resources that can help support them in recovery when they are released. The key is to make as many of these connections as soon as possible and while the inmate is still in the detention facility as to not be completely overwhelmed upon release.

STRATEGY to improve treatment & enable recovery for people with SUDs



Improving and Expanding Treatment Options

- By focusing efforts in expanding treatment options we can be better prepared as a community to meet the needs of our neighbors living with substance abuse issues. **One treatment type will not “cure” all instances of substance abuse.**
- Expanding education on **Naloxone**, the drug that can **PREVENT and reverse overdose** from opioids is among one of our **strategies to reduce deaths** and eliminate stigma associated with this crisis.
- By having community members, families as well as law enforcement, and other entities that may encounter someone who is at risk of overdose **equipped with Naloxone we can prevent instances of death by overdose.** We are working to increase availability of Naloxone so anyone who needs it can access it without risk of judgment or barrier of finance.

Peer Support and ROSC (Recovery Oriented System of Care)

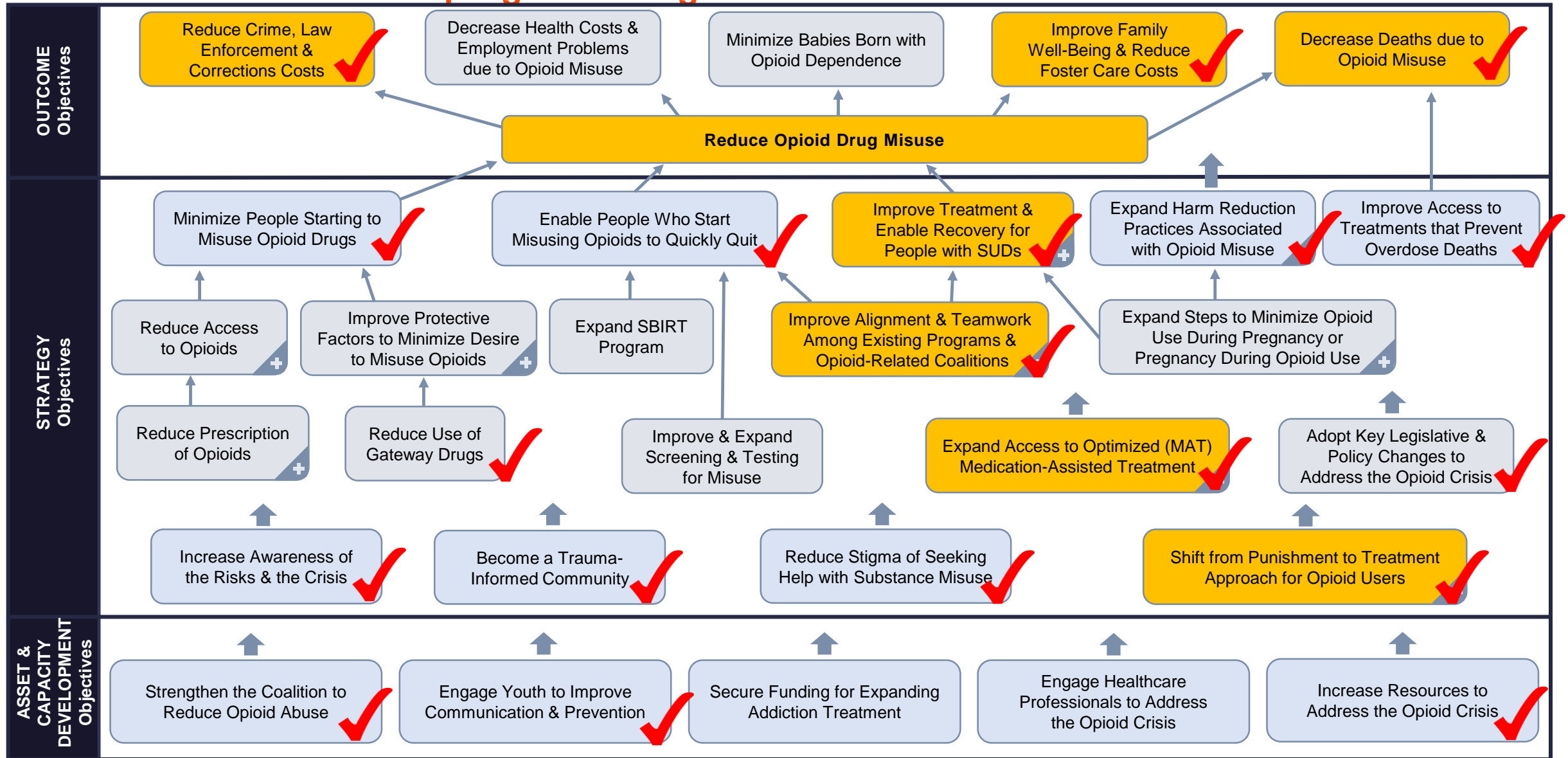
- One of our **largest areas of focus in on recovery** in order to **avoid relapse and recidivism** in the judicial and child welfare systems.
- BBCBC is working to ensure that **all child welfare involved families with instance of substance use** are **connected to services and treatment** and followed by **staffings and care coordination to ensure the families needs are met**. We are partnering with jails to collect and compare data on any arrests that may occur involving one of these families so that follow-up and planning can happen immediately.
- One of the most effective ways to introduce someone with substance use to treatment options is connecting them with a Peer Support Specialist. A Certified **Peer Support Specialist** is a person with significant life-altering experience. This is also referred to as lived experience. These **specialists support** individuals with struggles pertaining to mental health, psychological trauma or substance use.
- In Circuit 2, we are increasing the number of peers available in our area by offering **free certification trainings starting in March 2018** and collaborating with **Big Bend Mental Health Coalition and Magellan to conduct a Peer Conference in April 2018**.
- **A major component to a successful ROSC (Recovery Oriented System of Care) is Peers**. Peers can help connect those in need with initial services and explain what to expect. They also play a huge role in helping to support a person during and after treatment.

Prevention and Education

- BBCBC works with its providers to continuously identify needs and potential service gaps. **Residential Treatment for substance misuse has been identified as the most needed resource in the Northwest Region.**
- **By focusing on prevention and recovery efforts** we can control the projected increase in need for residential programs.
- **DISC Village, Inc., our Substance Abuse service provider** has dedicated a tremendous amount of resources and attention to **middle and high school education programs** to reach curious youth at a critical point in their development. DISC is in **EVERY middle and high school in Leon County** and offer education on substance misuse in Liberty, Wakulla, Franklin and Gadsden Schools and offer services to adults and children with substance misuse in all 8 counties.

COMPREHENSIVE STRATEGY CURRENT STATUS

Each red check indicates progress being made



Questions/Comments/Resources

- For more information on how to get involved in efforts to address the **Opioid issues in Circuit 2 - Leon, Wakulla, Gadsden, Liberty, Franklin, Jefferson, or Circuit 3 - Madison and Taylor Counties**, please contact

Amanda Wander
Big Bend Community Based Care
Network Coordinator – Circuit 2 + Madison and Taylor Counties
Amanda.wander@bigbendcbc.org
850-524-0544

For general questions on connections in the Northwest Region please contact

Mike Watkins
Big Bend Community Based Care, CEO
Mike.Watkins@bigbendcbc.org
850-410-1020

Major Service Provider Serving Circuit 2 and Madison/Taylor Counties
DISC Village Inc.
Leon Human Services Center
1000 W. Tharpe Street
850-627-3599
<http://www.discvillage.com/home.html>

Opportunities

Recovery Peer Specialist Training

When: March 12th through 16th, 2018

Where: Big Bend Community Based Care - [1000 West Tharpe Street, Tallahassee Florida 32303](#)

Trainers: Wesley Evans, Beth Dees and Chris Dykes

Training Capacity: 18 Participants

Registration Deadline 2/16/18

“Certified Recovery Peer Specialists utilize their unique lived experience to ensure client-directed care by assisting individuals to build the specific skills and relationships needed to achieve and maintain recovery from substance use and/or mental health condition.”

– Florida Certification Board

This is a 40-hour training that will solely fulfill the training requirements to apply for certification as a Certified Recovery Peer Specialist through the Florida Certification Board. There will be no cost for this training; any travel or lodging expenses will be the responsibility of the training participant.

If you are interested in registering or have questions please contact Amanda Wander with Big Bend Community Based Care at Amanda.wander@bigbendcbc.org or [850-524-0544](tel:850-524-0544)