



Department of Juvenile Justice Monthly Accountability Scorecard¹

Goal/Issue	July 2011	August 2011	September 2011	October 2011	November 2011	December 2011	January 2012	February 2012	March 2012	April 2012	May 2012	June 2012	Overall Trend ¹
Reduce Reliance on Secure Detention (Admissions to Secure Detention) ¹	-11% ↓	-6% ↓	-9% ↓	-6% ↓	-4% ↓	-3% ↓	-12% ↓	-3% ↓	-10% ↓	-12% ↓	-11% ↓	-14% ↓	Overall -9% Reduction in secure detention admissions
Redirect Youth to Effective Community Supervision (Low-Risk Youth Committed to DJJ)	-40% ↓	-58% ↓	-56% ↓	-70% ↓	-51% ↓	-52% ↓	-22% ↓	-35% ↓	-46% ↓	-40% ↓	-26% ↓	-52% ↓	Overall -45% reduction in commitments for low-risk youth
Redirect Youth to Effective Community Supervision (Dispositions to Residential Commitment)	-29% ↓	-33% ↓	-33% ↓	-24% ↓	-7% ↓	-22% ↓	-25% ↓	-15% ↓	-23% ↓	-25% ↓	-13% ↓	-40% ↓	Overall -24% decline in commitments to DJJ
Improve Public Safety (Number of Delinquency Referrals)	-13% ↓	-1% ↓	-10% ↓	-9% ↓	-13% ↓	-8% ↓	-13% ↓	-7% ↓	-16% ↓	-16% ↓	-16% ↓	-24% ↓	Overall -11% decline in delinquent referrals to DJJ
Improve Public Safety (Number of Felony Delinquency Referrals)	-10% ↓	2% ↑	-7% ↓	-5% ↓	-7% ↓	-4% ↓	-11% ↓	1% ↑	-11% ↓	-11% ↓	-14% ↓	-15% ↓	Overall -8% reduction in Felony referrals
Improve Public Safety (Number of Misdemeanor Delinquency Referrals)	-13% ↓	-5% ↓	-15% ↓	-10% ↓	-17% ↓	-12% ↓	-12% ↓	-13% ↓	-19% ↓	-21% ↓	-16% ↓	-28% ↓	Overall -16% reduction in Misdemeanor referrals
Improve Public Safety (Number of "Other" Delinquency Referrals)	-15% ↓	3% ↑	-5% ↓	-12% ↓	-12% ↓	-3% ↓	-15% ↓	-2% ↓	-16% ↓	-10% ↓	-18% ↓	-25% ↓	Overall -11% reduction in "Other" referrals
Increase Alternatives to Arrest for 1st Time Offenders (Number of Missed Opportunities)	-31% ↓	-23% ↓	-32% ↓	-30% ↓	-34% ↓	-36% ↓	-32% ↓	-33% ↓	-35% ↓	-37% ↓	-35% ↓	-47% ↓	Overall 34% reduction in first-time misdemeanors entering the system
Reduce Offending During Supervision (Number of Technical Violations of Probation)	-16% ↓	-4% ↓	-6% ↓	-15% ↓	1% ↑	-5% ↓	-9% ↓	-11% ↓	8% ↑	20% ↑	24% ↑	17% ↑	Overall 1% increase in technical violations of probation
Reduce Offending During Supervision (Number of New Law Violations of Probation)	-10% ↓	6% ↑	-10% ↓	4% ↑	-5% ↓	23% ↑	7% ↑	30% ↑	9% ↑	20% ↑	39% ↑	9% ↑	Overall 11% increase in new law violations of probation
Reduce Offending During Supervision (Number of Arrests for Committed Youth)	-115% ↓	-18% ↓	-13% ↓	35% ↓	0% ↔	56% ↑	-153% ↓	32% ↑	-20% ↓	66% ↑	-64% ↓	-54% ↓	Overall 3% increase in arrests for committed youth

¹ compared to the identical period during the previous fiscal year. A reduction indicates improvement.



Indicates improved performance



Indicates the measure increased or requires improvement.

C01 Report Card for Select Probation Measures

Circuit 1 Strengths and Weaknesses

Strengths:

Tbl 3: ODS rates lower than statewide average for both contracted providers and state-operated probation

Weaknesses:

Tbl 1: Higher than average commitment rates for youth with low and moderate risk PACT scores

Tbl 2: Technical VOPs above statewide average for state-operated probation

Tbl 4: Civil citation rate much lower than the state average

Tbl 5: Circuit LOS is 35 days longer than the statewide average

Table 1: Commitment Dispositions for Youth with Low and Moderate Risk to Reoffend PACT Scores, Circuit 1 vs. Statewide Average

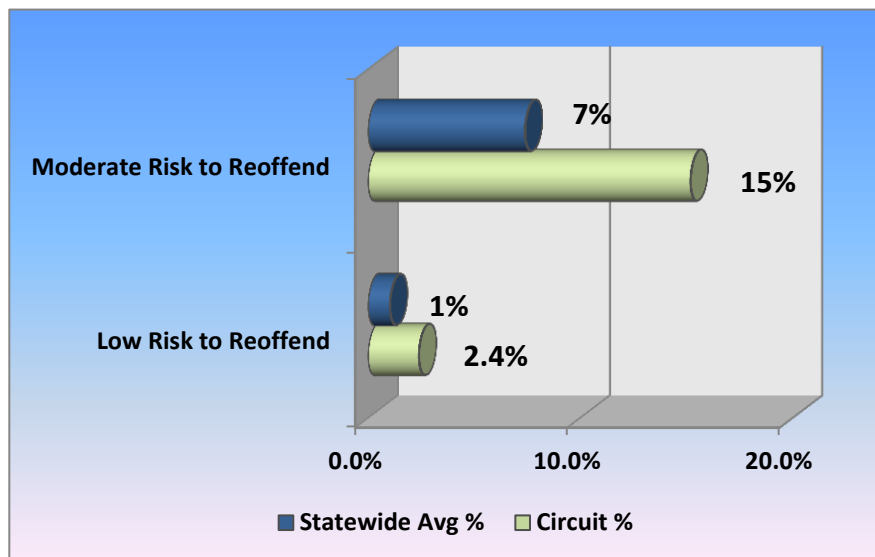


Table 2: New Law and Technical VOPs for Provider and State Operated Probation, & PCP Programs, Circuit 1 vs. Statewide Avg.

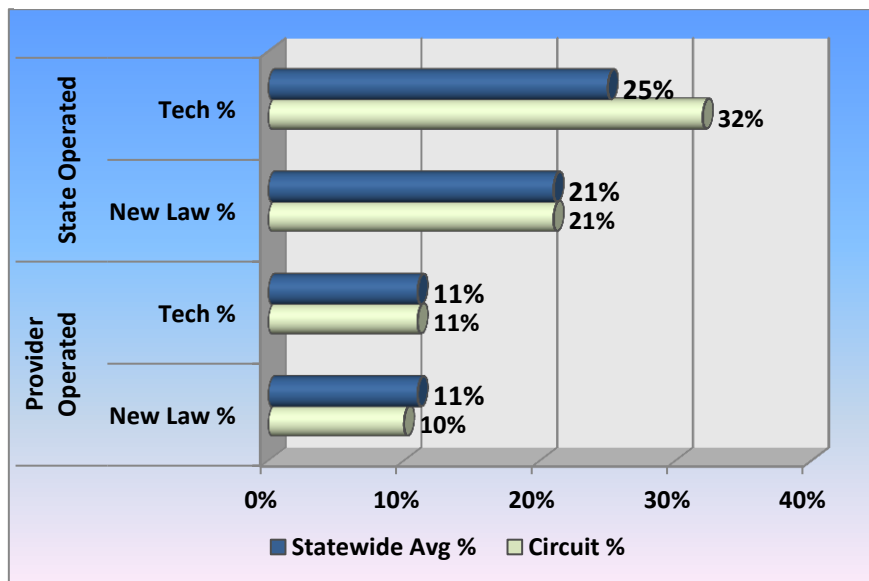
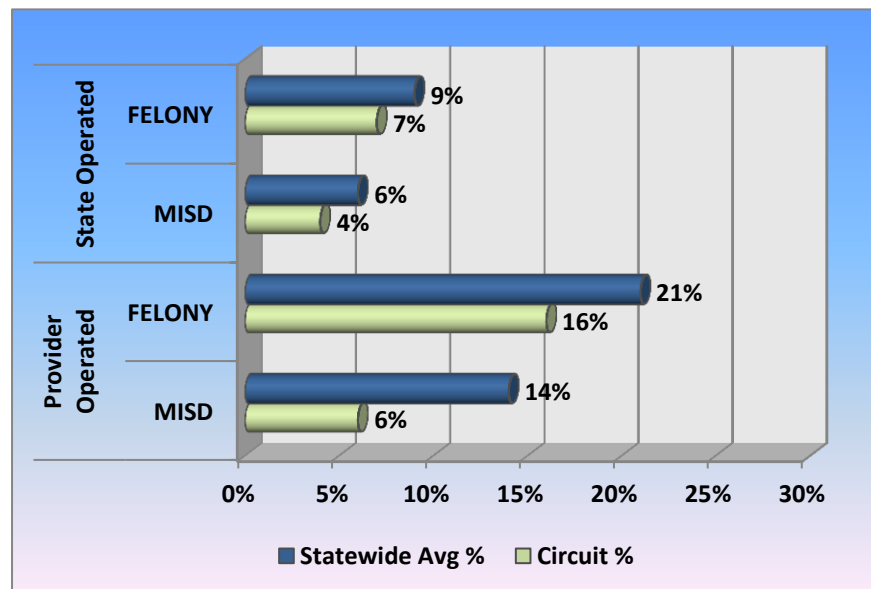


Table 3: Offenses During Supervision for Contracted Provider and State Operated Programs, Circuit 1 vs. Statewide Avg.



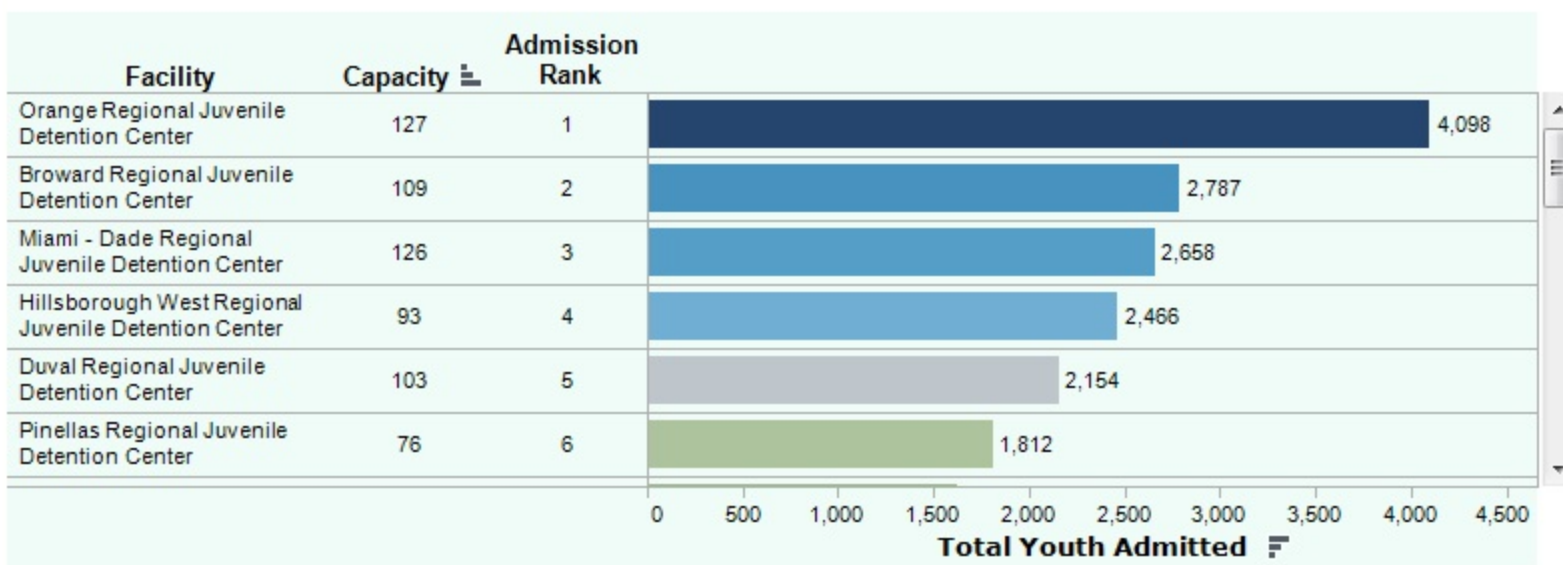
Secure Detention

July 1, 2011 - May 31, 2012

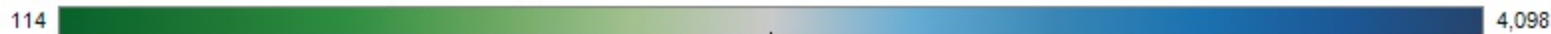
FACILITY DATA

Select Facility

(All) ▼

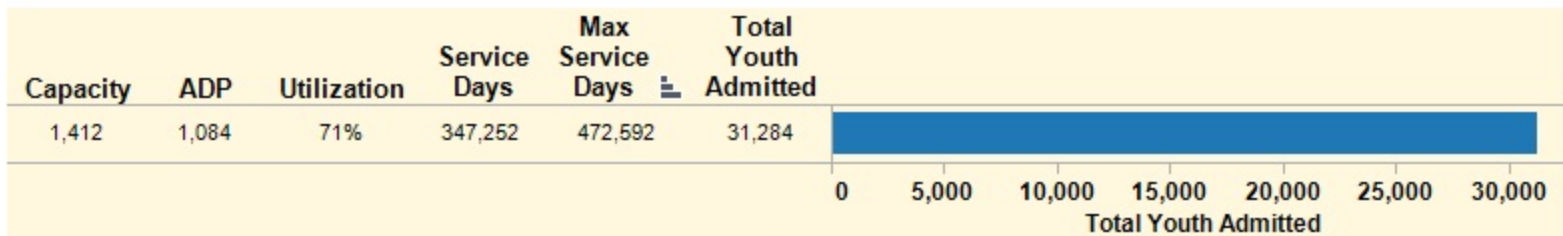


Legend: Total Youth Admitted (by Facility)



For additional information about this or any other Detention center, click on any field or data element in the table above to open a new window that will link directly to DJJ's Office of Detention Services page (<http://www.djj.state.fl.us/facilities/detention-centers>). To deselect and return to default, click anywhere in the blank area to the right of the colored bars.

STATEWIDE DATA



Sex



Race/Ethnicity

