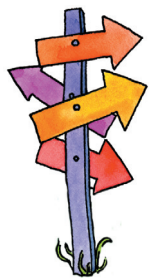
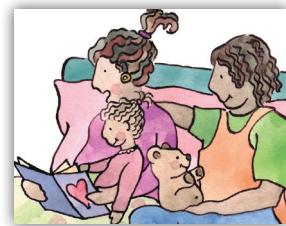


Many Paths to Enhancing Parent Child Relationships



*Innovative Approaches to Providing
Infant Mental Health, Home Visiting, and Part C Services*

**April 23-25, 2014 • Orlando, Florida
Embassy Suites, Lake Buena Vista South**



*A collaboration of
Florida Association for Infant Mental Health
Florida Maternal, Infant, and Early Childhood Home Visiting Initiative
and Florida's Early Steps Program*



Conference & Hotel Registration link: www.faimh.org/conf2014

Conference Registration: Early Bird rate until March 19 – \$85 / After March 19 – \$100

Hotel Registration (overflow): Caribe Royale Orlando, 8203 World Center Dr. (2.3 mi. from Embassy Suites)
Toll Free: 888-258-7501 / \$119 if booked by March 23 / Ref: Florida Association for Infant Mental Health
Self-parking is complimentary at both the Embassy Suites & the Caribe Royale

PRELIMINARY AGENDA

Wednesday, April 23

1:00 - 2:15 pm ***Intervening with Foster and High-Risk Families: Attachment and Biobehavioral Catch-up***
Keynote Mary Dozier, PhD, Department of Psychology, University of Delaware

2:30 - 3:45 pm ***Applying Developmental Science to Child Welfare***
Breakout Sessions Mary Dozier, PhD, Department of Psychology, University of Delaware
Carole Shauffer, MEd, JD, Youth Law Center, San Francisco, CA

"Gatekeeping" the Positive and Negative Effects on a Father/Baby Relationship
James P. McHale, PhD, Director, Family Study Center, USF, St. Petersburg, FL
Jack Johnson, NE Florida Healthy Start Coalition, Jacksonville, FL
Kenneth Scarborough, MPH, Central Hillsborough Healthy Start, Tampa, FL

Traveling the Circle of Security: Applications of an Attachment-Informed Parenting Model
Neil Boris, MD, Chief, Behavioral Health, Nemours Children's Hospital, Orlando, FL
Kimberly Renk, PhD, Department of Psychology, UCF, Orlando, FL

Sensory Processing, Self-Regulation and Toxic Stress: How Are They Related to IMH?
Sandra Adams, OTR, PhD, FSU Center for Prevention & Early Intervention Policy, Tallahassee, FL

Enhancing the Parent-Infant Relationship: A Home-Based Adaptation of Parent-Child Interaction Therapy for At-Risk Infants and their Families
Daniel Bagner, PhD, Department of Psychology, Florida International University, Miami, FL

Reflective Practice: Utilizing Supervision and Cultural Considerations to Enhance IMH
Ana Leon, PhD, LCSW, School of Social Work, University of Central Florida, Orlando, FL

4:00 - 5:15 pm ***Preventing Perinatal Depression in High Risk Mothers***
Breakout Sessions Deborah Perry, PhD, Georgetown University, Washington, DC

Holding the Baby in Mind During Home Visits
Barbara White, MSW, MEd; Christina Colon, MEd; Sally Barrios, ARNP; Sandra Adams, OTR, PhD
FSU Young Parents Project, Miami & Tallahassee, FL

-
- 4:00 - 5:15 pm
Breakouts, cont.
- Bridging Social Emotional Development to School Readiness: Getting from Here to There***
Anne Hogan, PhD, FSU Center for Prevention & Early Intervention Policy, Tallahassee, FL
- Recognizing Trauma in Parents: Beyond Pencil and Paper Measures***
Neil Boris, MD, Chief, Behavioral Health, Nemours Children's Hospital, Orlando, FL
- Safe Baby Court Team Overview***
Lucy Hudson, Director, Safe Babies Court Teams Project, ZERO TO THREE, Washington, DC
- Motivational Interviewing 101: Deepening Family Engagement Through Meaningful Conversations***
Robin Hart, Certified National Trainer, Ounce of Prevention Fund of Florida, Tallahassee, FL
- Linking Families to Services: Hillsborough County's Central In-Take and Referral System***
Leisa Stanley, PhD; Brenda Breslow, Healthy Start Coalition of Hillsborough County, Tampa, FL;
Maria Tamayo, Success 4 Kids & Families, Tampa, FL
- Maternal-Infant Attachment: Using Motivational Interviewing to Promote Breastfeeding***
David Duresky, Broward Healthy Start Coalition, Ft. Lauderdale, FL
-

5:30 - 7:00 pm ***Opening Reception – Key West Terrace***

Thursday, April 24

- 8:30 - 9:45 am
Keynote
- Moving beyond ACE's for Our Next Generation: Building From Collective Vision to Action***
Introduction by **George Sheldon**, former Secretary, Florida Department of Children and Families, and Assistant Secretary, HRSA Administration for Children and Families
David W. Willis, MD, Director, Division of Home Visiting and Early Childhood Systems, Maternal and Child Health Bureau, Department of Health and Human Services, Washington, DC
-
- 10:00 - 11:15 am
Breakout Sessions
- Keeping Relationships Strong: Helping Parents and Young Children Maintain Connections and Cope with Separation***
Dorinda Williams, Director, Military Family Projects, ZERO TO THREE, Washington, DC
- Accessing Resources for IMH Services: Clarity about Sources, Eligibility and Documentation***
Kathryn Shea, LCSW, The Florida Center for Early Childhood, Sarasota, FL;
Celeste Putnam, MS, FSU Center for Prevention & Early Intervention Policy, Tallahassee, FL
- "Attunement" in Helping Relationships: Using the Fussy Baby Approach to Connect with Families and Repair Inevitable Misses***
Alison Steier, PhD, Harris Institute, Southwest Human Development, Phoenix, AZ
- Recognizing Trauma in Young Children: First Steps for Screening and Referral***
Kimberly Renk, PhD, Department of Psychology, UCF, Orlando, FL
- Red Flags and Gold Stars: How Risk and Protective Factors Influence Child Outcomes***
Nancy Peck, Certified National Trainer, Ounce of Prevention Fund of Florida, Tallahassee, FL
- Collective Impact of Working Together for Children: The Federal Home Visiting Perspective***
David W. Willis, MD, Director, Division of Home Visiting and Early Childhood Systems, Maternal and Child Health Bureau, Department of Health and Human Services, Washington, DC
- Integrating Infant Mental Health, Trauma-Informed Practices with Part-C Services: Seeing the Same Baby (Part 1)***
Jane Clarke, PhD, Infant Mental Health Team, Santa Fe, NM
- Healing Early Adversity***
Lucy Hudson, Director, Safe Babies Court Teams, ZERO TO THREE, Washington, DC
-

1:00 pm - 2:15 pm Keynote	<i>Integrating Infant Mental Health Into Early Childhood Systems</i> Deborah Perry, PhD, Georgetown University, Washington, DC
2:30 pm - 3:45 pm Breakout Sessions	<i>Buffering Our Babies: The Effect on Infants and Toddlers of Stress, Trauma and Grief Due to Parental Deployment, Loss or Death</i> Dorinda Williams, Director, Military Family Projects, ZERO TO THREE, Washington, DC
	<i>Understanding Substance-Using Families</i> Patricia Armstrong, LCSW, Trainer, Ounce of Prevention Fund of Florida, Tallahassee, FL
	<i>Preventing, Understanding and Addressing Young Children’s Challenging Behavior Using the Principles of Infant Mental Health</i> Alison Steier, PhD, Harris Institute, Southwest Human Development, Phoenix, AZ
	<i>Innovative Strategies for Dealing with Interpersonal Violence</i> Phyllis Sharps, PhD, RN, Johns Hopkins University, Baltimore, MD
	<i>Engaging Hard-to-Reach Teens</i> Barbara White, MSW, MEd; Juanita Armbrister, BS, FSU Young Parents Project, Tallahassee, FL
	<i>Effective Strategies to Overcome Intergenerational Risks</i> Craig Ramey, PhD, Virginia Tech Carilion Research Institute, Roanoke, VA
	<i>Integrating Infant Mental Health, Trauma-Informed Practices with Part-C Services: Seeing the Same Baby (Part 2)</i> Jane Clarke, PhD, Infant Mental Health Team, Santa Fe, NM
	<i>Fetal Alcohol Spectrum Disorders: What is it and what do we do about it?</i> Lucy Hudson, Director, Safe Babies Court Teams, ZERO TO THREE, Washington, DC Kathryn Shea, LCSW, CEO, The Florida Center for Early Childhood, Sarasota, FL

4:00 pm - 5:15 pm Keynote	<i>Using our Brains – and Brain Research – to Drive up Results from Home Visiting</i> Sharon Ramey, PhD, Virginia Tech Carilion Research Institute, Roanoke, VA
-------------------------------------	---

Friday, April 25

8:30 - 9:45 am Breakout Sessions	<i>Trauma and Parenting: How Do We Break the Cycle</i> Neil Boris, MD, Chief, Behavioral Health, Nemours Children’s Hospital, Orlando, FL Tonier Cain, Team leader for the National Center for Trauma Informed Care, and subject of the documentary “Healing Neen”
	<i>Disparity, Diversity and Development: Old Challenges and New Ways of Thinking</i> Celeste Philip, MD, MPH, Deputy Secretary for Health, Florida Department of Health Anne Hogan, PhD, FSU Center for Prevention & Early Intervention Policy, Tallahassee, FL
	<i>Effective Strategies for Working with Substance Exposed Infants and Their Families</i> Judi Vitucci, ARNP, PhD, Executive Director, Healthy Start Coalition of Pinellas Patti Nagel, PAT+ Supervisor, Pinellas County, Florida Lisa Colen, Hillsborough Healthy Start SEN Taskforce Tim Curtin, Administrative Director, Community Services, Memorial Health Systems, Hollywood, FL
	<i>Innovative Strategies for Dealing with Interpersonal Violence in Pregnancy and Perinatally</i> Phyllis W. Sharps, PhD, RN, Johns Hopkins University, Baltimore, MD
	<i>Safe Baby Court Team for Judges</i> Lucy Hudson, Director, Safe Babies Court Teams, ZERO TO THREE, Washington, DC
	<i>Engaging Diverse Populations</i> Sharon Ross-Donaldson, LCSW, MSW, FSU, Tallahassee, FL

8:30 - 9:45 am Breakouts, cont.	<i>Using Data to Drive Daily Practice and Program Success</i> Gabrielle Bargerstock , Nurse Family Partnership National Service Office, Denver, CO <i>Empowerment Strategies for Connecting Families with Community Resources</i> Allison LaMont, LMSW , Parents as Teachers National Office/MIECHV Home Visiting, St. Louis, MO
10:00 am - Noon Keynote	<i>Overcoming Trauma: A Call To Action for Home Visitors, Infant Mental Health Specialists, and Early Intervention Providers</i> Tonier Cain , Team leader for the National Center for Trauma Informed Care, and subject of the documentary "Healing Neen"
Noon	<i>Adjourn</i>



Continuing Education Credits

CEUs will be available for:

Occupational Therapist, Physical Therapist,
Speech Language Pathologist, Registered Nurse,
Clinical Social Worker, Licensed Mental Health Counselor,
Licensed Marriage and Family Therapist, Psychologist, Audiologist

CLE and CJE's will be offered for attorneys and judges